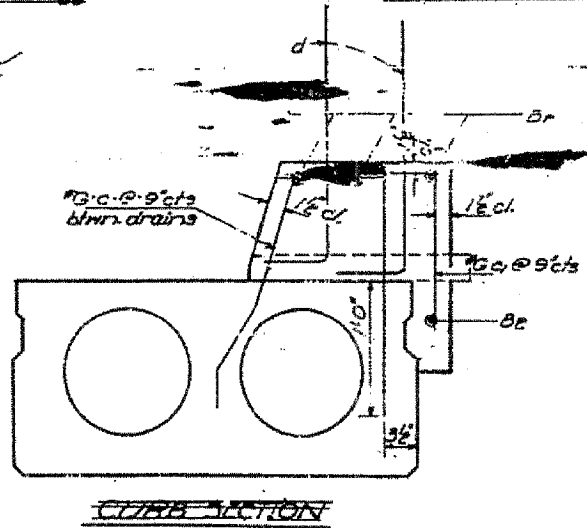
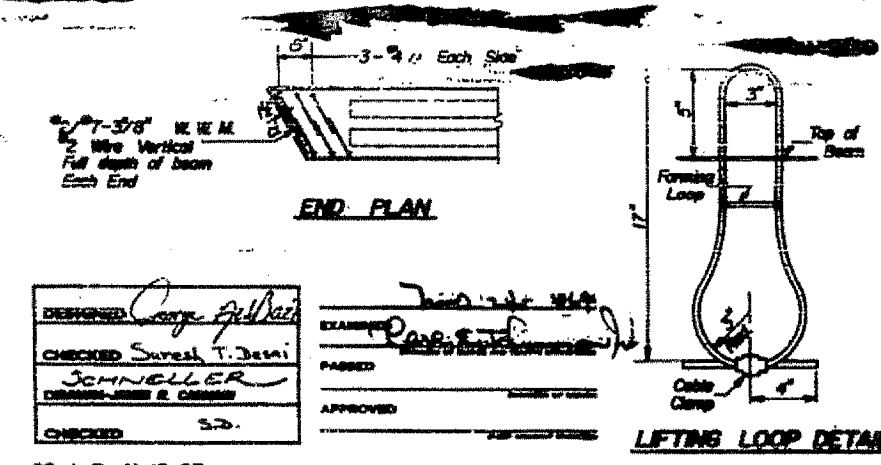
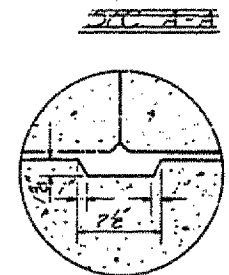
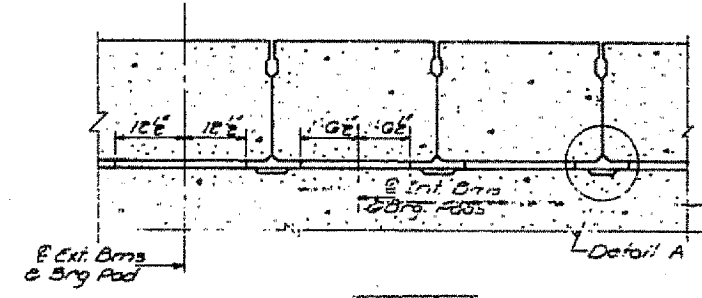
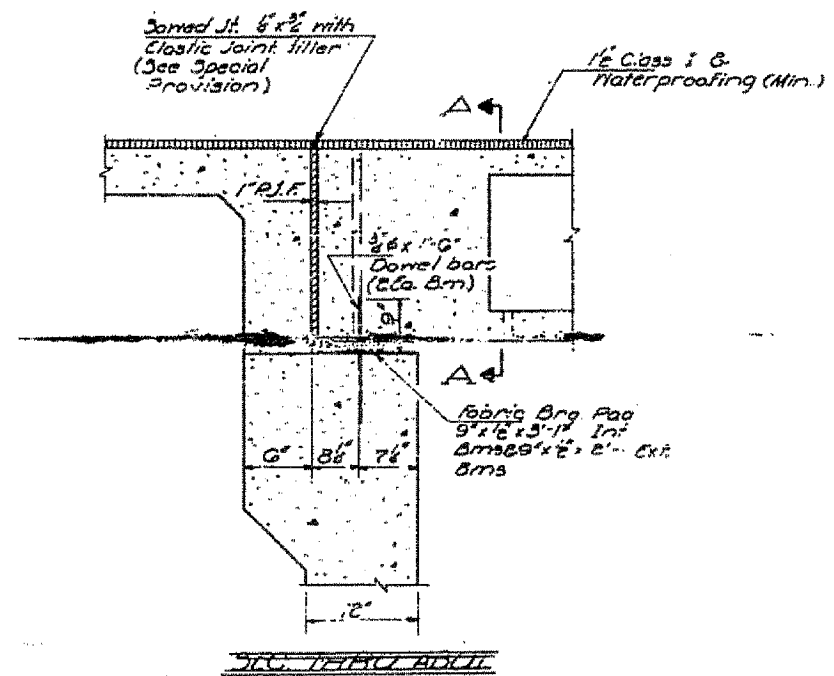
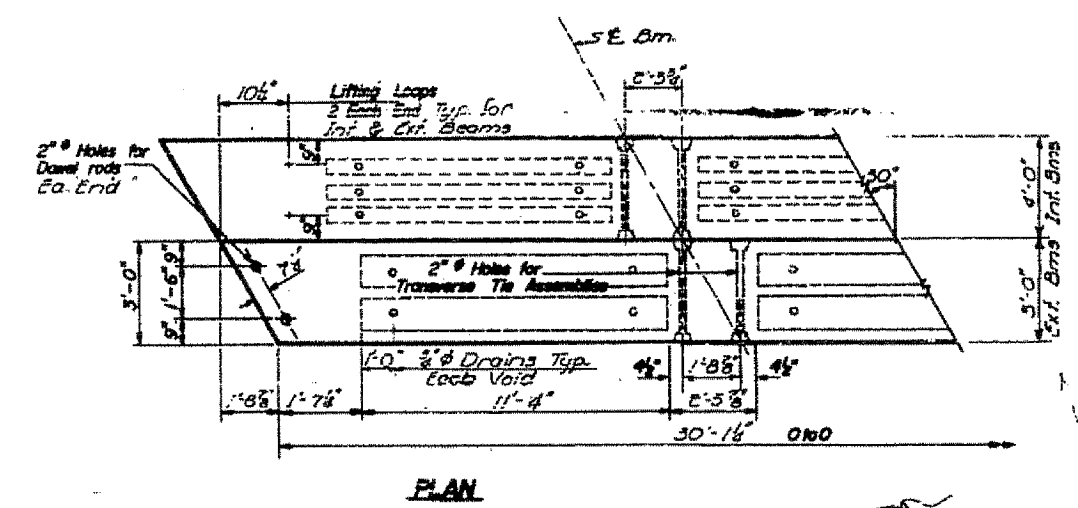
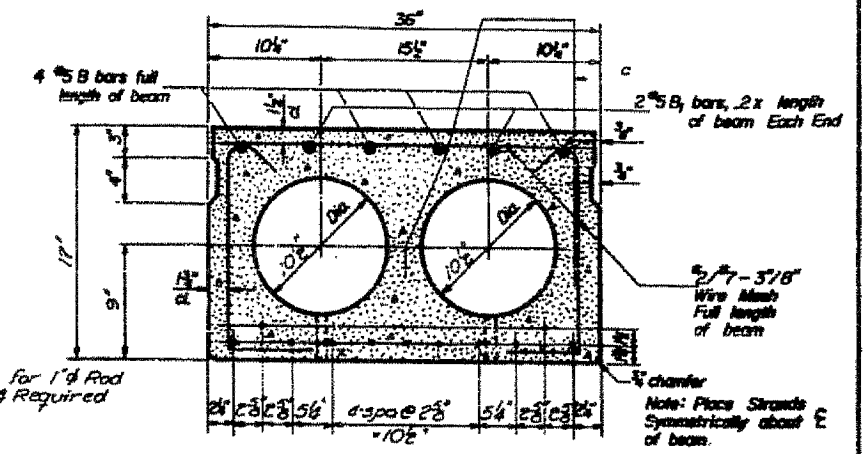
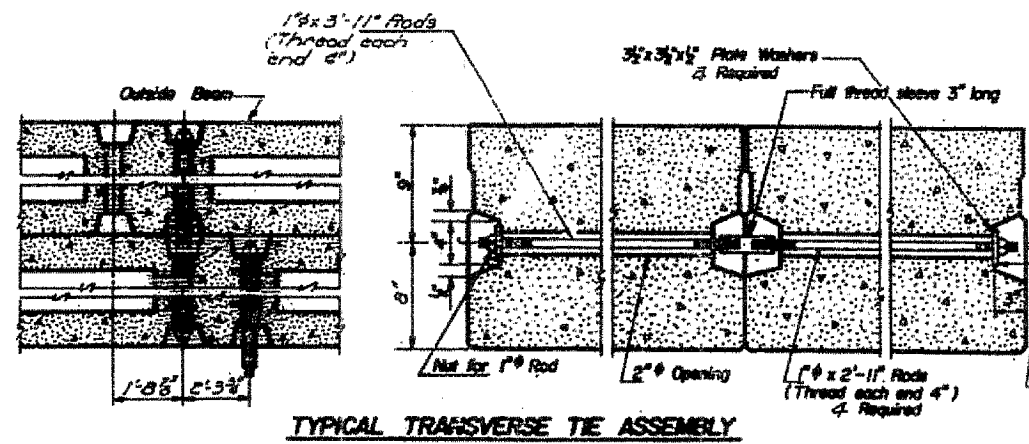
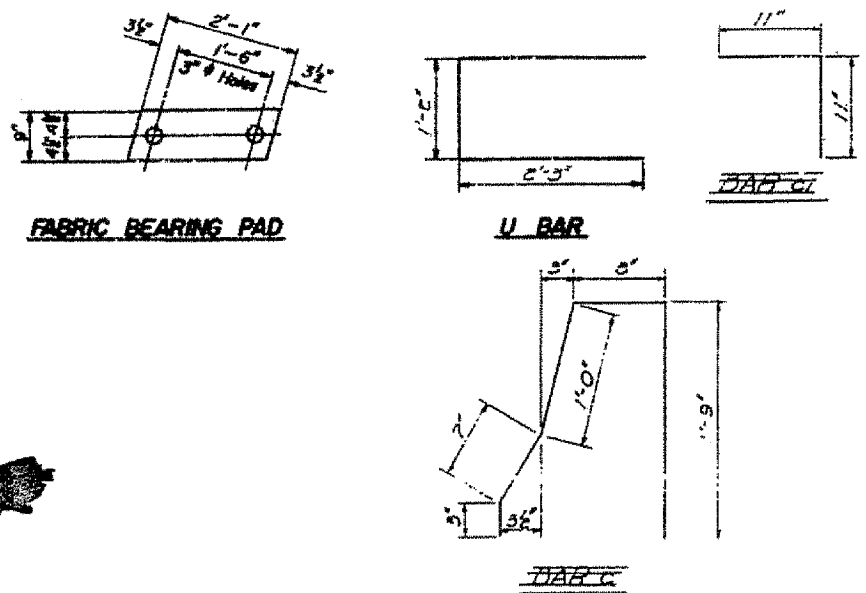


STATE OF ILLINOIS
 DEPARTMENT OF PUBLIC WORKS & BUILDINGS
 DIVISION OF HIGHWAYS

PROJECT NO.	U-BR LASALLE 44	23	SHEET NO. OF 8 SHEETS
-------------	-----------------	----	-----------------------



GENERAL NOTES

Prestressing steel shall be non-permeable high strength, stress-relieved 7-wire strand. The nominal diameter shall be 7/8" and the nominal cross-sectional area shall be 0.109 sq. in. Lifting loops shall be 1/2" diameter, 6x19 class wire rope with fiber core and shall have a minimum ultimate tensile strength of 21,000 lbs.

The 1" rods in the transverse tie assembly shall be tightened to a snug fit and the strands set. Packets that receive transverse tie bar on outside beam shall be filled with grout after transverse tie assembly is in place.

Longitudinal shear keys shall be packed with a very dry mix of 2-1 sand and P.C. mortar. After beams have been erected, holes for the dowl anchors shall be drilled into the sub-structure and the anchor details shall be grouted in place.

BILL OF MATERIALS

Item	Qty	Size	Length	Shape
* B	16	#5	29'-9"	
* B1	24	#5	6'-0"	
* B2	16	#5	29'-8"	
* C	160	#6	4'-3"	U
* C1	160	#6	1'-10"	U
* U	48	#4	5'-8"	

Precast Prestressed Concrete
 17" Deck Beams Sq Ft 361
 Class X Concrete Cu Yds 6.9
 Reinforcement Bars Lbs 940

DESIGNED: George A. [Signature]
 CHECKED: Suresh T. Desai
 JOHNELLER
 ENGINEER-IN-CHARGE
 CHECKED: S.S.
 PD-1-R 11-19-65

After fabrication the transverse tie connections (tie rods, nuts, washers and sleeves) shall be hot-dipped galvanized in accordance with A.S.T.M. Specification A153.

A coat of reinforcement and accessories cast into the beam, of bearing girders, of corner angles, and of grouting longitudinal shear keys is included in unit price bid for Precast Prestressed Concrete Deck Beams.

An Alternate Strand Pattern using extra high strength Prestressing Strand (270 ksi) is permitted. See Special Provisions.

Steel for dowl rods shall be A.S.T.M. A-306 or A.S.T.M. A-615.

Steel for transverse tie rods shall be A.S.T.M. A-306 grade 30-70.

STRUCTURAL DETAILS
 U-BR LASALLE 44
 SHEET NO. 23 OF 8