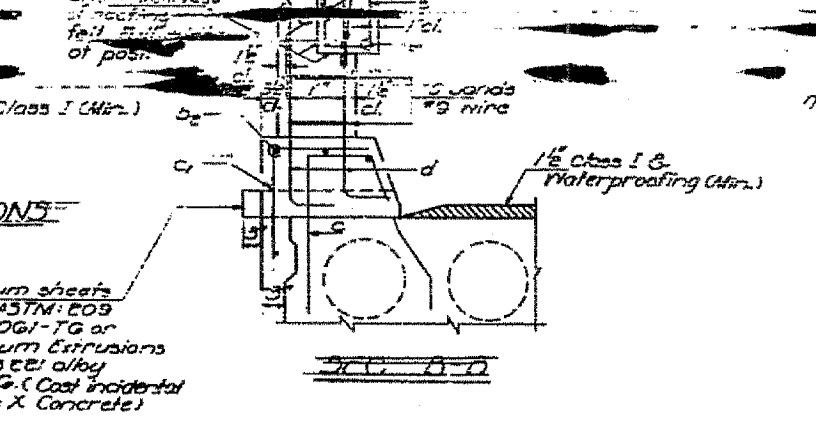
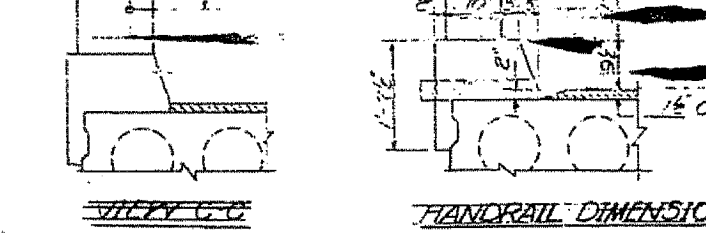
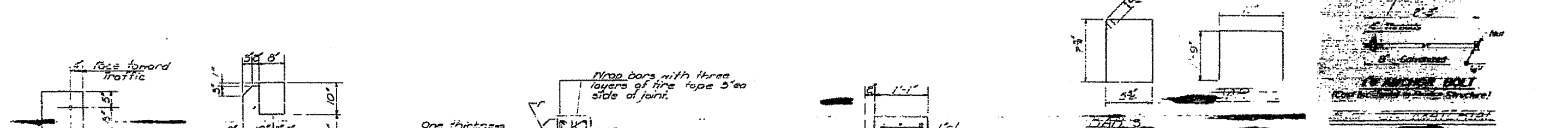
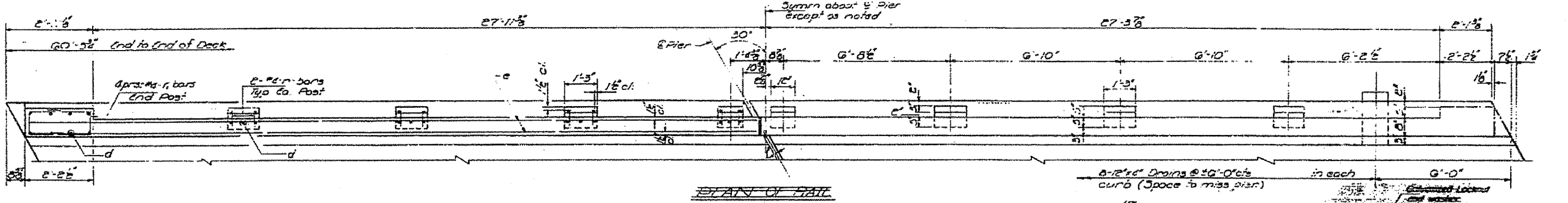
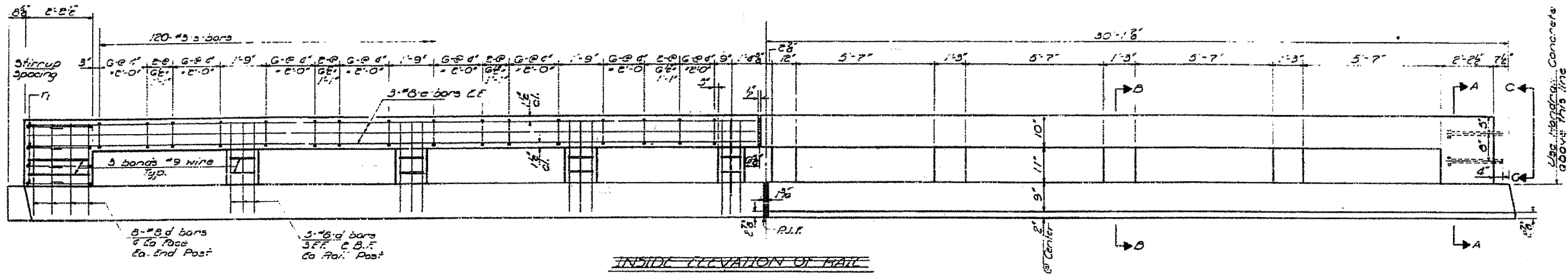


STATE OF ILLINOIS
 DEPARTMENT OF PUBLIC WORKS & BUILDINGS
 DIVISION OF HIGHWAYS

| | | | |
|--------------|--------------|----|----|
| PROJECT NO. | U-BR LASALLE | 44 | 24 |
| SHEET NO. | 5 | | |
| TOTAL SHEETS | 8 | | |



| Bar | Qty | Length | Volume |
|--------------------|-----|-----------|-----------|
| d | 112 | #8 2'-6" | |
| f | 4 | #8 2'-6" | |
| 7 | 32 | #4 4'-5" | |
| 8 | 240 | #3 2'-11" | |
| Handrail Concrete | | | Cutts 3.6 |
| Reinforcement Bars | | | Lbs 3070 |

* The cost of furnishing and placing the #9 gage wire, fine rope and roofing felt shall be included in unit or as bid per cubic yards for Handrail Concrete.

DESIGNED *George Anbar*
 CHECKED *Suresh T. Desai*
 DRAWN *Schneller*
 CHECKED *S.D.*

EXAMINED _____
 PARSED _____
 APPROVED _____

Aluminum sheets welded ASTM: E09 alloy 6061-T6 or Aluminum Extrusions ASTM: 6061 alloy 6061-T6. (Cost incidental to Class X Concrete)

CONCRETE HANDRAIL
 501 RTA SEC 0-03
 LA SALLE COUNTY
 STA 997+00

FOR INFORMATION ONLY