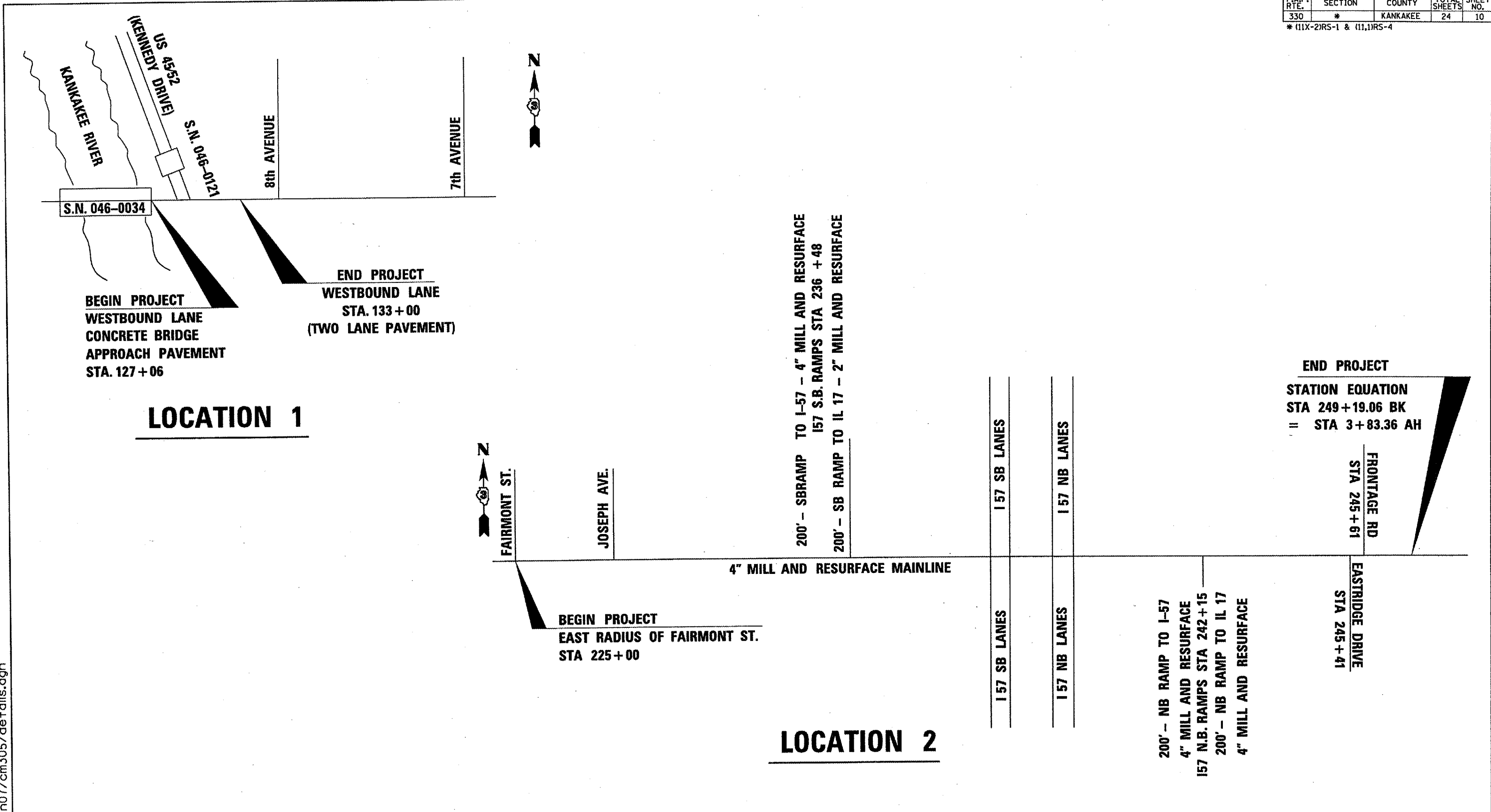


F.A.P. RTE.	SECTION	COUNTY	TOTAL SHEETS	SHEET NO.
330	*	KANKAKEE	24	10

* (11X-2)RS-1 & (11,1)RS-4



LOCATION 1

LOCATION 2

REVISIONS	
NAME	DATE

ILLINOIS DEPARTMENT OF TRANSPORTATION
LOCATION MAP
 F.A.P. ROUTE 330 (IL ROUTE 17)
 SECTION (11X-2)RS-1 & (11,1)RS-4
 KANKAKEE COUNTY

DATE: 06/27/2006
 c:/projects/cmain07/cm305/details.dgn