

FAU. RTE.	SECTION	COUNTY	TOTAL SHEETS	SHEET NO.
6769	(8B)BR-4	TAZEWELL	102	1

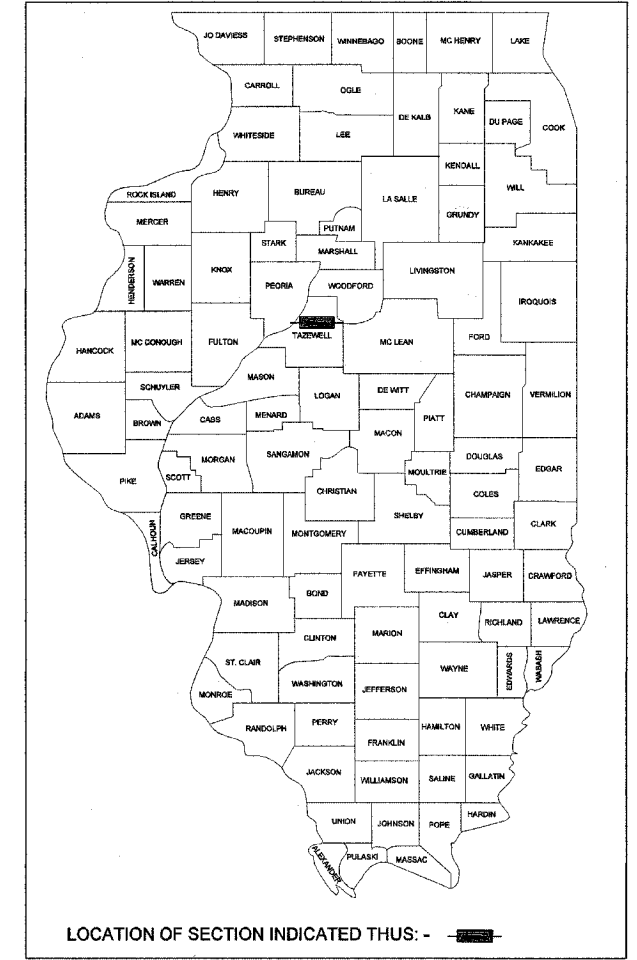
STATE OF ILLINOIS  
DEPARTMENT OF TRANSPORTATION

DIVISION OF HIGHWAYS

**PROPOSED  
HIGHWAY PLANS**

FAU ROUTE 6769 (IL 98)  
SECTION (8B)BR-4  
TAZEWELL COUNTY  
C-94-068-02  
PROJECT M-6769(002)

D-94-056-02



INDEX OF SHEETS:

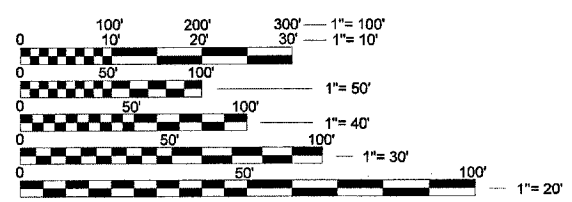
1. COVER SHEET
- 2-4. COMMITMENTS, GENERAL NOTES & STATUS OF UTILITIES
- 5-9. SUMMARY OF QUANTITIES
- 10-12. TYPICAL SECTIONS
- 13-18. SCHEDULE OF QUANTITIES
19. CONTROL POINTS
- 20-21. EXISTING & REMOVAL PLANS
- 22-23. PLAN & PROFILE
- 24-29. STAGING PLANS
- 30-33. EROSION CONTROL PLANS
34. RIGHT OF WAY PLANS
- 35-50. STRUCTURE PLANS - S.N. 090-0173
- 51-55. CULVERT EXTENSION DETAILS
56. BUTT JOINT DETAIL
57. TYPICAL ENTRANCE DETAILS
58. FIELD ENTRANCE DETAIL
- 59-78. DISTRICT CADD STANDARS
  - 205001-D4 406211-D4 635101-D4
  - 281001-D4 406301-D4 667101-D4
  - 280101-D4 440001-D4 780001-D4
  - 406101-D4 606101-D4
  - 406201-D4 630101-D4
- 79.-102. CROSS SECTIONS

LIST OF STANDARDS:

280001-02	610001-02	701001-01
420001-06	630001-06	701006-02 702001-06
420401-05	630301-03	701011-01 704001-02
503001-02	631031-05	780001-01
515001-02	635006-02	701301-02 781001-02
542401	635011-01	701306-01 886001
542511	666001	701311-02
609001-02	667101	701321-08

DESIGN DESIGNATION

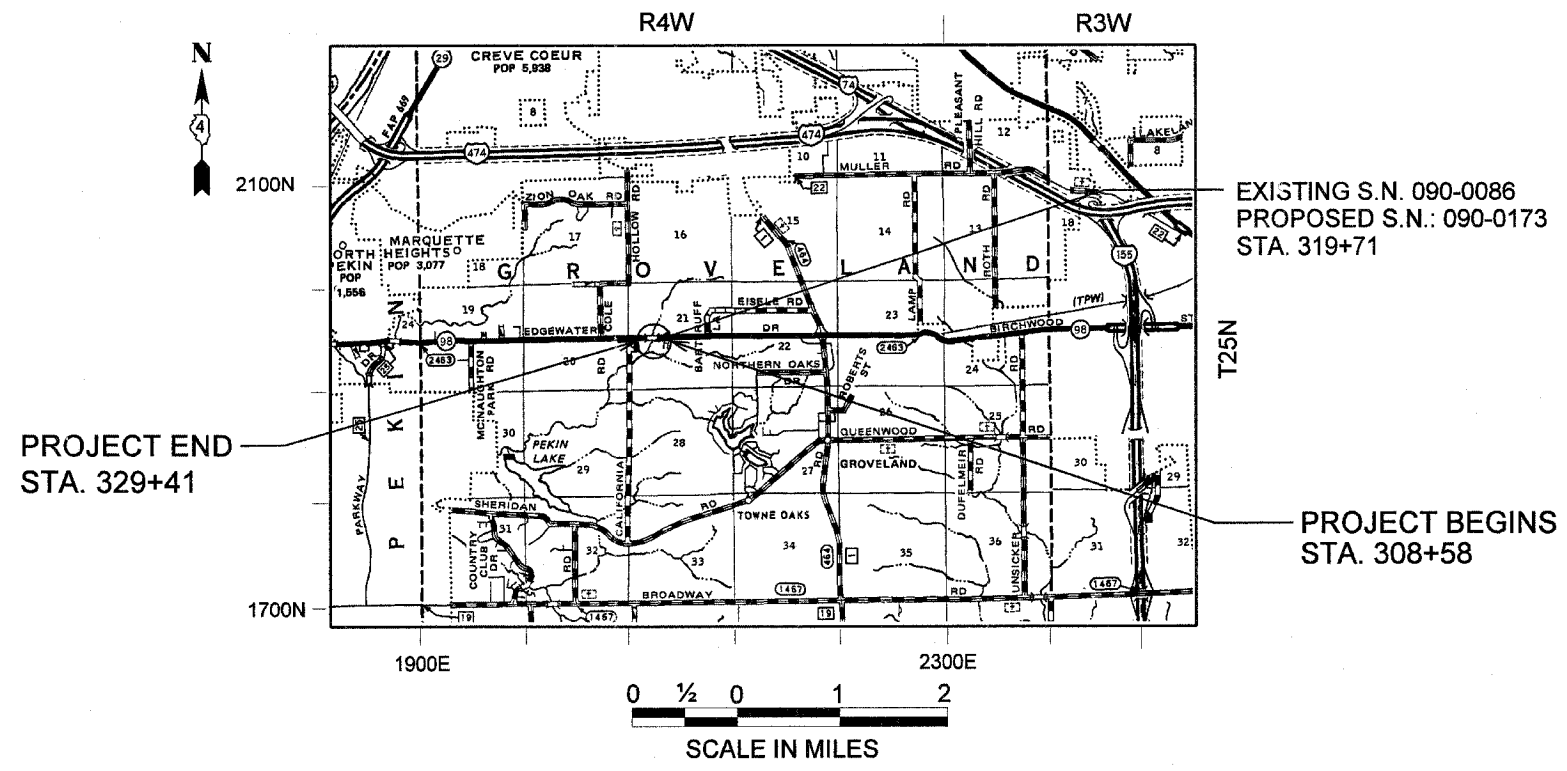
CURRENT ADT = 4,900 (2003)  
SU =  
MU = 11.2 %  
MAJOR COLLECTOR (RURAL)  
POSTED SPEED = 55 MPH



FULL SIZE PLANS HAVE BEEN PREPARED USING STANDARD ENGINEERING SCALES. REDUCED SIZED PLANS WILL NOT CONFORM TO STANDARD SCALES. IN MAKING MEASUREMENTS ON REDUCED PLANS, THE ABOVE SCALES MAY BE USED.

J.U.L.I.E.  
JOINT UTILITY LOCATION INFORMATION FOR EXCAVATION  
1-800-892-0123

CONTRACT NO. 68247



NPDES  
REQUIRED

QC/QA  
BITUMINOUS

BITUMINOUS  
SUPERPAVE

STATE OF ILLINOIS  
DEPARTMENT OF TRANSPORTATION  
DIVISION OF HIGHWAYS

SUBMITTED AUG 21, 2006

Joseph E. Lane  
DEPUTY DIRECTOR OF HIGHWAYS, REGION ENGINEER

October 13, 2006  
Mike Hine  
ENGINEER OF DESIGN AND ENVIRONMENT

October 13, 2006  
Milton R. Sosa, P.E.  
DIRECTOR OF HIGHWAYS, CHIEF ENGINEER

PRINTED BY THE AUTHORITY  
OF THE STATE OF ILLINOIS

PROJECT ENGINEER: MAUREEN ADDIS (309) 671-3454

DESIGNER: LEONEL CRESPO (309) 671-3459