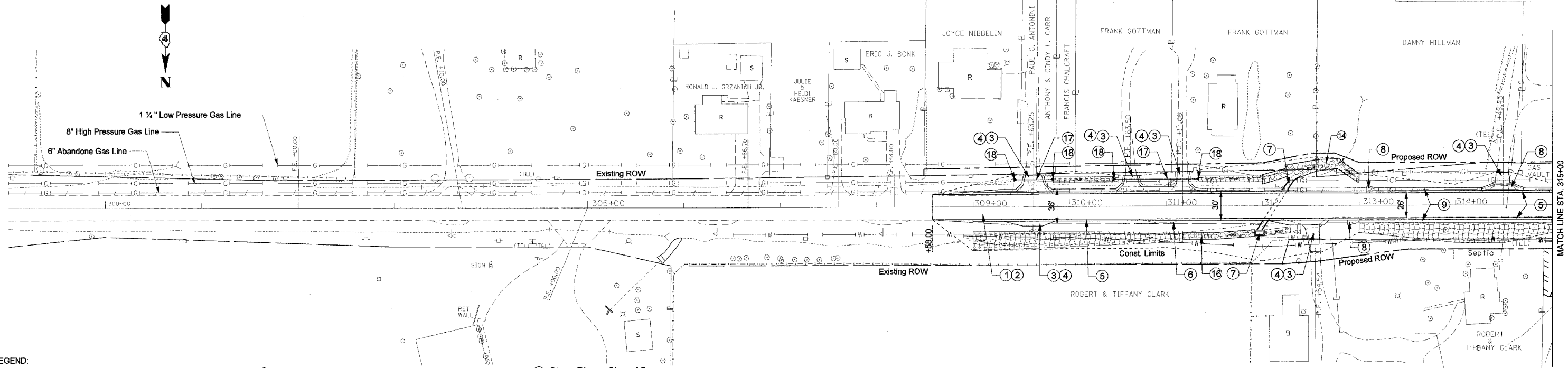


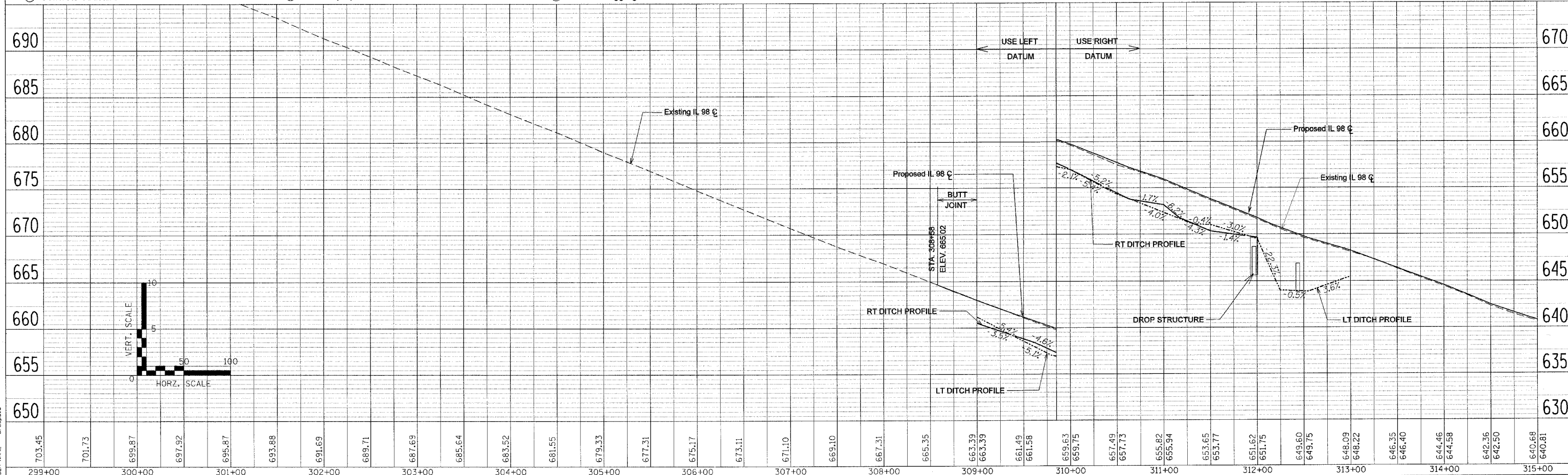
FAU RTE.	SECTION	COUNTY	TOTAL SHEETS	SHEET NO.
6789	(8B)BR-4	TAZEWELL	102	22
STA. 308+58		TO STA. 315+00		
FED. ROAD DIST. NO.		ILLINOIS	FED. AID PROJECT	

PLAN	SUMMARY	DATE
NO. 10	BY: []	
NO. 11	DATE	
NO. 12	BY: []	
NO. 13	DATE	
NO. 14	BY: []	
NO. 15	DATE	



- LEGEND:**
- ① Bit. Conc. Surf. Cse., Superpave, Mix D, N50
 - ② Leveling Binder (Machine Method), Superpave, N50
 - ③ Bit. Conc. Binder Cse., Superpave, IL 19.0, N50
 - ④ Incidental Bituminous Surfacing, Superpave
 - ⑤ Bituminous Shoulder Superpave 8"
 - ⑥ Aggregate Shoulders, Type B, 6"
 - ⑦ Concrete Structure
 - ⑧ Class SI concrete (Outlet)
 - ⑨ Concrete Gutter, Type A (Modified)
 - ⑩ SPBGR, Type A
 - ⑪ Traffic Barrier Terminal Type 1, Special (Tangent)
 - ⑫ Traffic Barrier Terminal Type 6
 - ⑬ Erosion Control Curb
 - ⑭ Stone Riprap Class A4
 - ⑮ Stone Riprap Class A5
 - ⑯ Stone Riprap Class B3
 - ⑰ Pipe Culvert, Class D, Type 1, 15"
 - ⑱ Metal End Section 15"
 - ⑲ Aggregate Surface Course Type B
 - ⑳ Permanent Steel Sheet Piling
 - ㉑ Guardrail Aggregate Erosion Control

PROFILE	SUMMARY	DATE
NO. 16	BY: []	
NO. 17	DATE	
NO. 18	BY: []	
NO. 19	DATE	



PLOT DATE = 8/21/2006
 FILE NAME = c:\projects\68247\8b\chase 11\changeplan\plan.dgn
 PLOT SCALE = 1/8" = 1'-0"
 USER NAME = c:\users\chase

PLAN & PROFILE IL 98