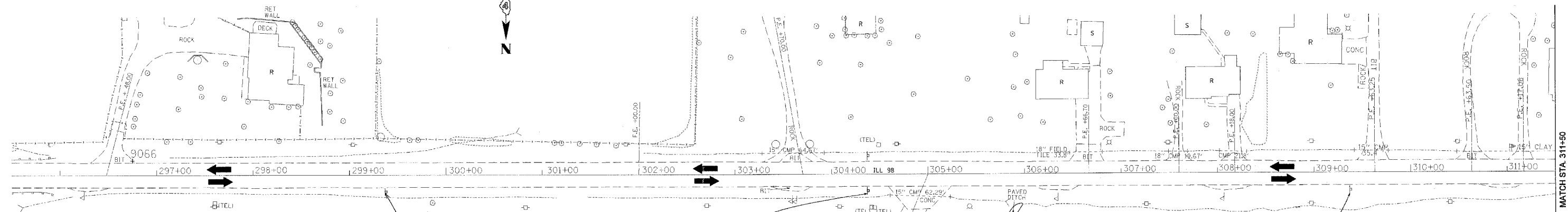


F.A.U. RTE.	SECTION	COUNTY	TOTAL SHEETS	SHEET NO.
6769	(8B) BR-4	TAZEWELL	102	26
STA. 308+58		TO STA. 329+41		
FED. ROAD DIST. NO. 4		ILLINOIS	FED. AID PROJECT	



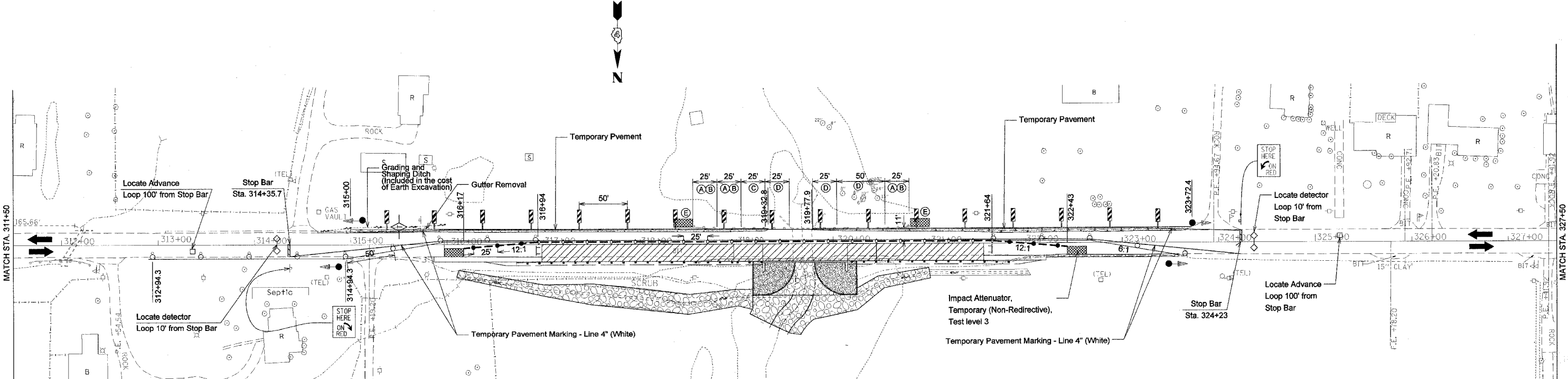
TEMPORARY BRIDGE TRAFFIC SIGNALS NOTES (STAGE I AND II)

1. TWO PHASE SIGNAL OPERATION. THE ENGINEER OF TRAFFIC SHALL APPROVE ALL TIMING PARAMETERS.
2. STOP BAR PLACEMENT, TEMPORARY CONCRETE BARRIER, AND SIGNAL PLACEMENT/ DETAILS SHALL BE AS SHOWN.
3. ADVANCE WARNING SIGNS ARE REQUIRED AS SHOWN. THE CONTRACTOR SHALL FURNISH AND INSTALL SOLAR POWERED YELLOW FLASHERS ON THE ADVANCE WARNING SIGN. THE CONTRACTOR SHALL RETURN THE FLASHERS TO THE DEPARTMENT UPON REMOVAL OF THE TEMPORARY BRIDGE SIGNALS.
4. ALL TRAFFIC SIGNAL AND ADVANCE WARNING FLASHER SECTIONS SHALL HAVE 12" DIAMETER LENSES.
5. THE TEMPORARY TRAFFIC SIGNAL HEADS SHALL BE PLACED AS INDICATED ON THE PLANS OR DIRECTED BY THE ENGINEER.
6. THE TEMPORARY TRAFFIC SIGNAL INSTALLATION SHALL CONFORM TO ALL M.U.T.C.D. REQUIREMENTS.
7. ALL LABOR AND MATERIALS REQUIRED TO COMPLY WITH THESE REQUIREMENTS AND PLAN SHEET DETAILS SHALL BE INCLUDED IN THE PRICE FOR THE TEMPORARY BRIDGE SIGNALS INSTALLATION, THERE WILL BE NO ADDITIONAL COMPENSATION.

Sign to be located 1,500' in advance of Stop bar

12" Solar Yellow Led Flasher

Sign to be located 500' in advance of Stop bar



STAGE I CONSTRUCTION

- (Sequence of construction / Applications)
1. Set up traffic control according to Standard 701321 except where modified on this plan sheet.
 2. Remove Existing Pavement and Right Side of the Bridge.
 3. Remove Concrete Gutter from Rt. Sta. 321+84.79 to Sta. 323+57.96
 4. Construct Right Side of Bridge, construct Bituminous Shoulder (5 1/2") , from Rt. Sta. 315+86 to 323+58, Install permanent Steel Plate Beam Guardrail, Binder Course and Temporary Ramp; Construct proposed ditch and riprap.
 5. Set Up Traffic Control for Stage II according to Standard 701321.
 6. Switch Traffic to Stage II.

NOTES:

- A. Remove Existing Guardrail.
- B. Install Temporary Steel Plate Beam Guardrail, Type A.
- C. Remove and Re-Erect Steel Plate Beam Guardrail, Type A.
- D. Existing Guardrail to remain.
- E. Install Impact Attenuator Temporary (Non-Reductive), Test Level 3

LEGEND:

- Work Area
- Traffic Signal
- Temporary Concrete Barrier
- Impact Attenuator
- Drum with steady burning light
- Induction loop detector
- Temporary Pavement Marking - Line 4"
- Sign
- Type III Barricade
- Type C Bidirectional reflector
- Double vertical panel
- Steady burning lights and double vertical panels

PRIOR TO STAGE I CONSTRUCTION

- (Sequence of construction / Applications)
1. Remove and Re-Erect Existing Steel Plate Beam Guardrail.
 2. Construct Temporary Pavement for Eastbound lane
 3. Remove Concrete Gutter from Lt. Sta. 314+62.7 to 315+80.4, Lt. Sta. 321+49.84 to 323+51.70 and install Temporary Ditch Check
 4. Install Impact Attenuator Temporary (Non-Reductive), Test Level 3

PLOT DATE: 05/12/08
 FILE NAME: c:\projects\68247\bridge\stage1\sheet.dgn
 PLOT SCALE: 1" = 50.000' / 1" = 50.000'
 USER NAME: c:\users\j...