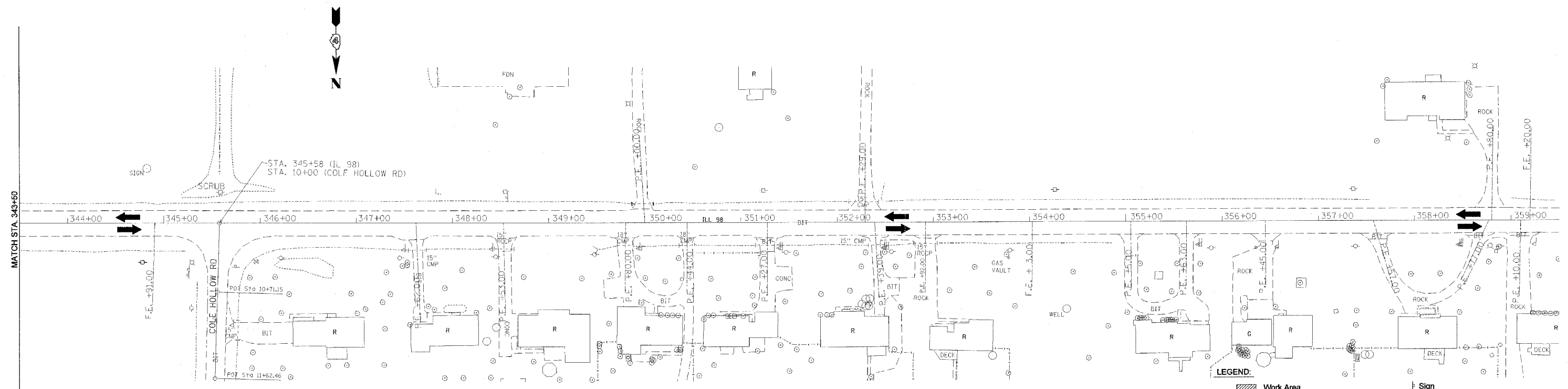
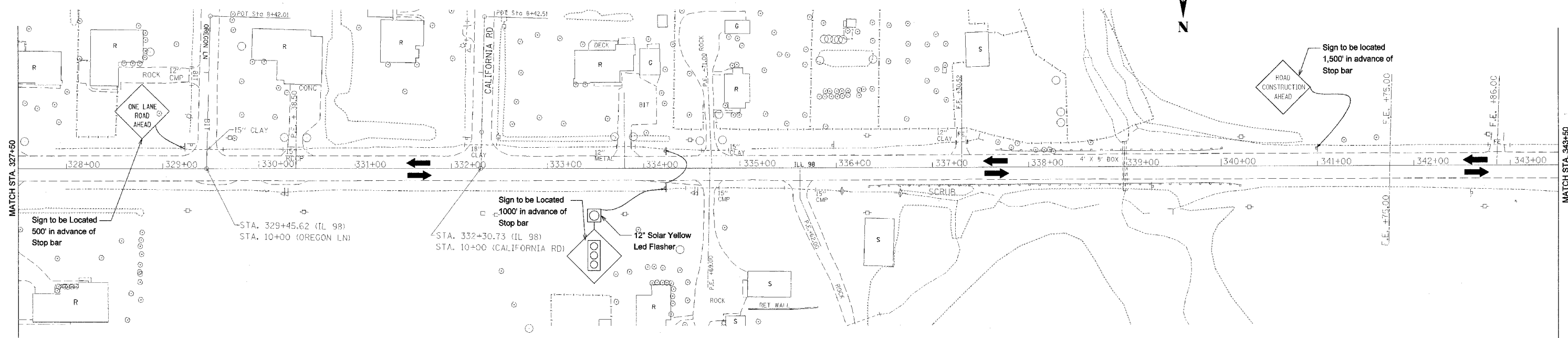


F.A.U. RTE.	SECTION	COUNTY	TOTAL SHEETS	SHEET NO.
6769	(8B) BR-4	TAZEWELL	102	27
STA. 308+58		TO STA. 329+41		
FED. ROAD DIST. NO. 4		ILLINOIS	FED. AID PROJECT	



- LEGEND:**
- Work Area
  - Traffic Signal
  - Temporary Concrete Barrier
  - Impact Attenuator
  - Drum with steady burning light
  - Induction loop detector
  - Temporary Pavement Marking - Line 4"
  - Sign
  - Type III Barricade
  - Type C Bidirectional reflector
  - Double vertical panel
  - Steady burning lights and double vertical panels

PLOT DATE = 8/21/2006  
 FILE NAME = c:\projects\88\phase 1\stage 1 sheet.dgn  
 PLOT SCALE = 50.000' / IN.  
 USER NAME = c:\people