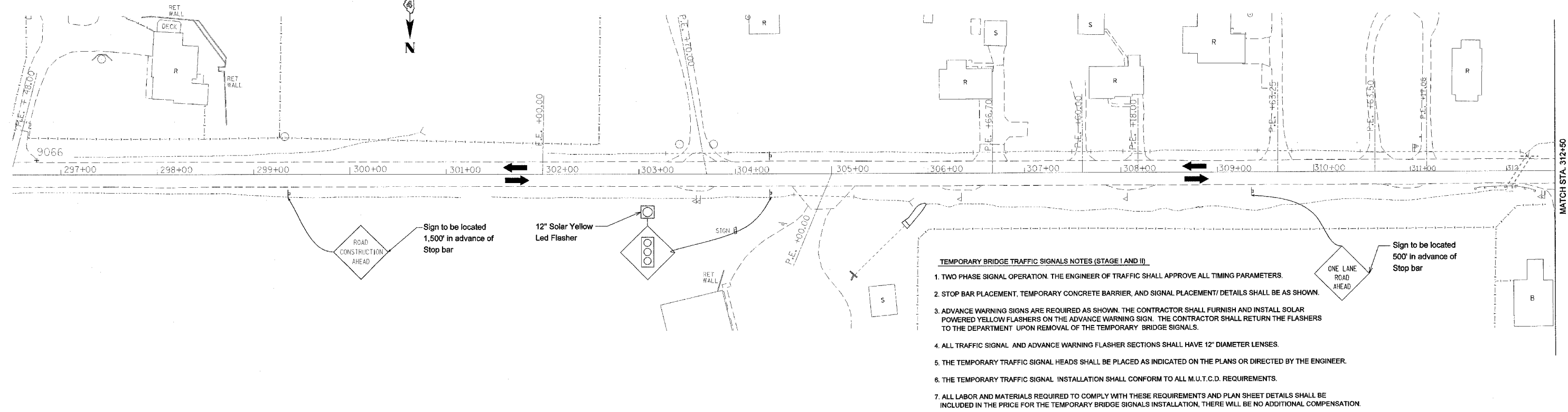
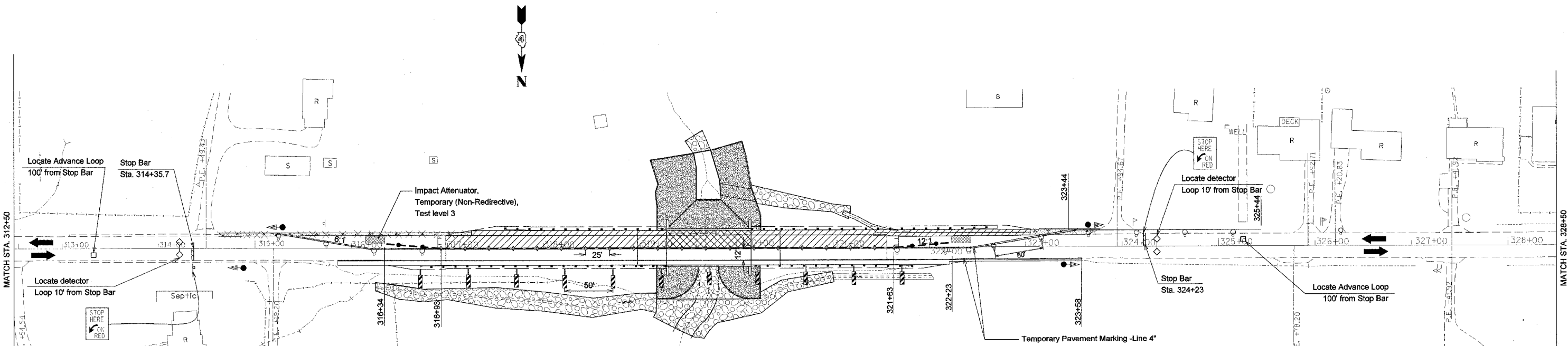


F.A.U. RTE.	SECTION	COUNTY	TOTAL SHEETS	SHEET NO.
6799	(BB)BR-4	TAZEWELL	102	28
STA. 308+58		TO STA. 329+41		
FED. ROAD DIST. NO. 4		ILLINOIS	FED. AID PROJECT	



- TEMPORARY BRIDGE TRAFFIC SIGNALS NOTES (STAGE I AND II)**
- TWO PHASE SIGNAL OPERATION. THE ENGINEER OF TRAFFIC SHALL APPROVE ALL TIMING PARAMETERS.
 - STOP BAR PLACEMENT, TEMPORARY CONCRETE BARRIER, AND SIGNAL PLACEMENT/ DETAILS SHALL BE AS SHOWN.
 - ADVANCE WARNING SIGNS ARE REQUIRED AS SHOWN. THE CONTRACTOR SHALL FURNISH AND INSTALL SOLAR POWERED YELLOW FLASHERS ON THE ADVANCE WARNING SIGN. THE CONTRACTOR SHALL RETURN THE FLASHERS TO THE DEPARTMENT UPON REMOVAL OF THE TEMPORARY BRIDGE SIGNALS.
 - ALL TRAFFIC SIGNAL AND ADVANCE WARNING FLASHER SECTIONS SHALL HAVE 12" DIAMETER LENSES.
 - THE TEMPORARY TRAFFIC SIGNAL HEADS SHALL BE PLACED AS INDICATED ON THE PLANS OR DIRECTED BY THE ENGINEER.
 - THE TEMPORARY TRAFFIC SIGNAL INSTALLATION SHALL CONFORM TO ALL M.U.T.C.D. REQUIREMENTS.
 - ALL LABOR AND MATERIALS REQUIRED TO COMPLY WITH THESE REQUIREMENTS AND PLAN SHEET DETAILS SHALL BE INCLUDED IN THE PRICE FOR THE TEMPORARY BRIDGE SIGNALS INSTALLATION, THERE WILL BE NO ADDITIONAL COMPENSATION.



- STAGE II CONSTRUCTION**
(Sequence of construction / Applications)
- Remove Temporary Pavement, Existing Guardrail, Existing Pavement and Construct Stage II of the Bridge.
 - Install Permanent Steel Plate Beam Guardrail and place Binder Course and Temporary Ramp.
 - Construct Proposed Ditch and Riprap.
 - Remove Traffic Control related to Standard 701321.
 - Complete Resurfacing (leveling Binder & Surface Course) operation after Stage II is complete.
 - Place Permanent Pavement Marking

LEGEND:

	Work Area		Sign
	Traffic Signal		Type III Barricade
	Temporary Concrete Barrier		Type C Bidirectional reflector
	Impact Attenuator		Double vertical panel
	Drum with steady burning light		Steady burning lights and double vertical panels
	Induction loop detector		
	Temporary Pavement Marking - Line 4"		

PLOT DATE = 8/21/2006
 PLOT SCALE = 500,000 / 1 IN.
 USER NAME = crespelle