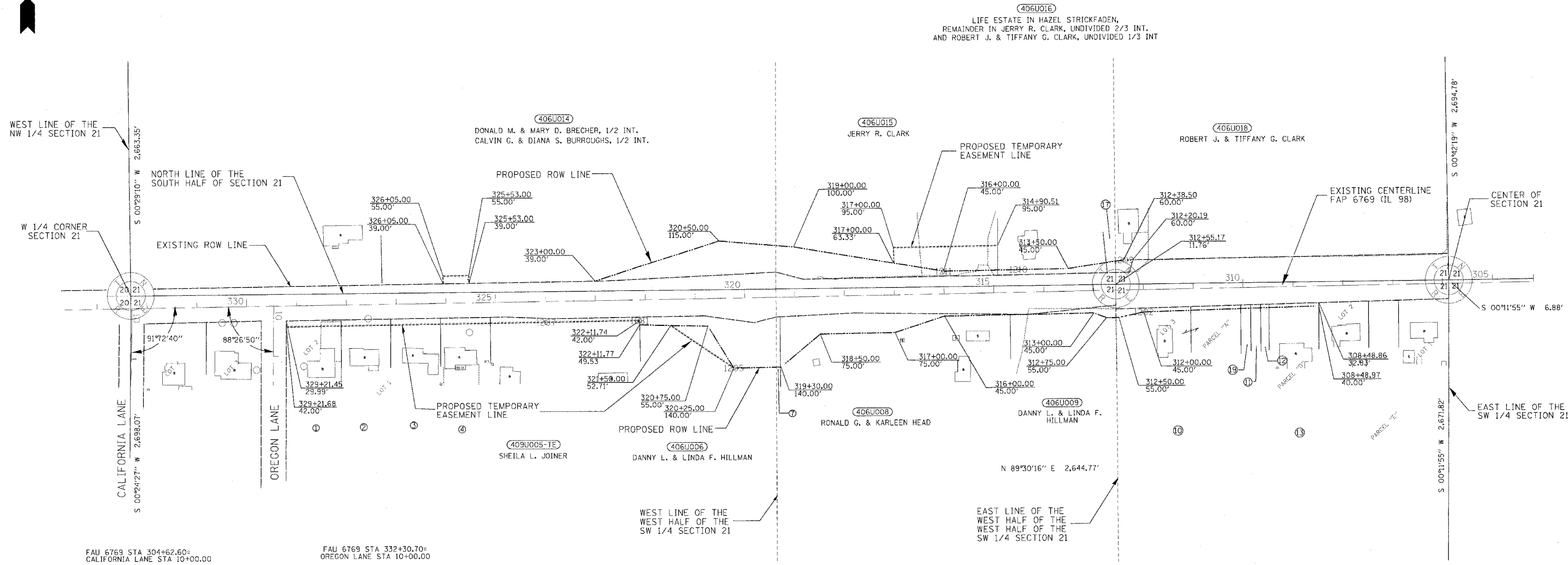


FAU RTE.	SECTION	COUNTY	TOTAL SHEETS	SHEET NO.
6769	(8B)BR-4	TAZEWELL	102	34
STA. 308+58	TO STA. 329+41			
FED. ROAD DIST. NO. 4	ILLINOIS	FED. AID PROJECT		

NW 1/4 SECTION 21 T 25 N R 4 W 3RD P.M.



APPROVED BY _____ DATE _____
 DIS. DIST. ENGINEER
 i198/1198row.m32
 inp01row.ipf
 jobrow.gpk
 Field Book 2793



SW 1/4 SECTION 21 T 25 N R 4 W 3RD P.M.

Grid Factor = 0.999949
 East Zone

- NW Corner Section 21 1,437,424.5811, 2,462,434.9153
- W 1/4 Corner Section 21 1,434,761.3228, 2,462,457.5208
- SW Corner Section 21 1,432,063.3218, 2,462,438.3343
- S 1/4 Corner Section 21 1,432,087.7511, 2,463,759.9883
- SE Corner Section 21 1,432,161.0713, 2,467,726.7063
- E 1/4 Corner Section 21 1,434,816.5873, 2,467,713.1373
- NE Corner Section 21 1,437,476.8763, 2,467,691.7278
- N 1/4 Corner Section 21 1,437,478.7704, 2,465,069.0317

- | | |
|---------------------------------------|---|
| ① TROY A. & DIANE DUBOIS (406U001-TE) | ⑩ FRANK G. & LILY M. GOTTMAN (406U010) |
| ② HENRY A. SWEET, JR. (406U002-TE) | ⑪ FRANCIS CHALCRAFT (406U011) |
| ③ NATHAN F. RIPPER (406U003-TE) | ⑫ PAUL GERALD ANTONINI, JR. (406U012) |
| ④ JERRY D. CRAMER, JR. (406U004-TE) | ⑬ JOYCE M. NIBBELIN (406U013) |
| ⑦ DONNA DOUGAN (406U007) | ⑭ LIFE ESTATE IN HAZEL STRICKFADEN, REMAINDER IN JERRY R. CLARK (406U017) |
| | ⑮ DANIEL FOGAL (406U019) |

FOR OLD R.O.W., SEE PLATFILE 6 SHEET 38

PLATFILE 532

JOB NO. R-94-006-03

RIGHT OF WAY PLANS
 FAU ROUTE 6769 (IL 98)

PROJECT _____ SECTION (8B)BR-4

STATION 308+48.86 TO

STATION 329+21.68

COUNTY TAZEWELL

SHEET 1 OF 1