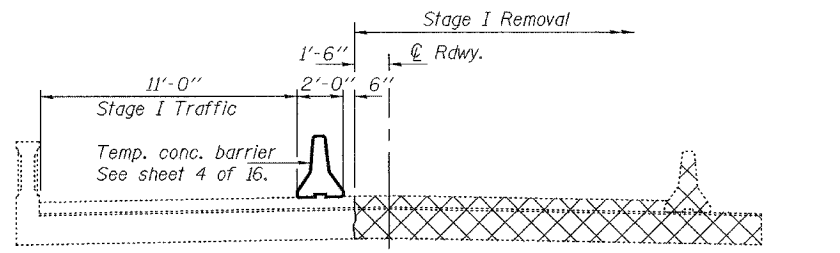


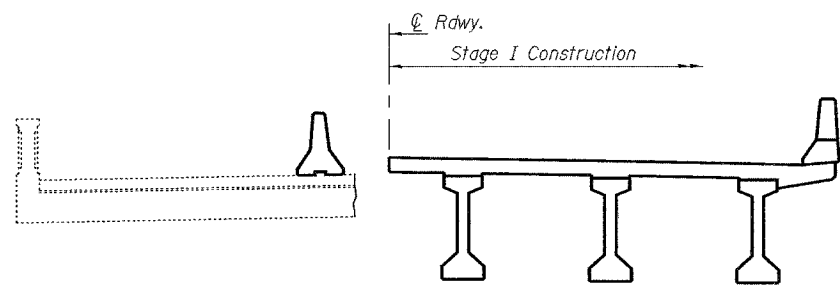
STATE OF ILLINOIS  
DEPARTMENT OF TRANSPORTATION

ROUTE NO.	SECTION	COUNTY	LISTS	SHEET	SHEET NO. 3
FAU 6769	(8B) BR-4	TAZEWELL	102	31	16 SHEETS
FED. ROAD DIST. NO. 7	ILLINOIS	FED. AID PROJECT-			

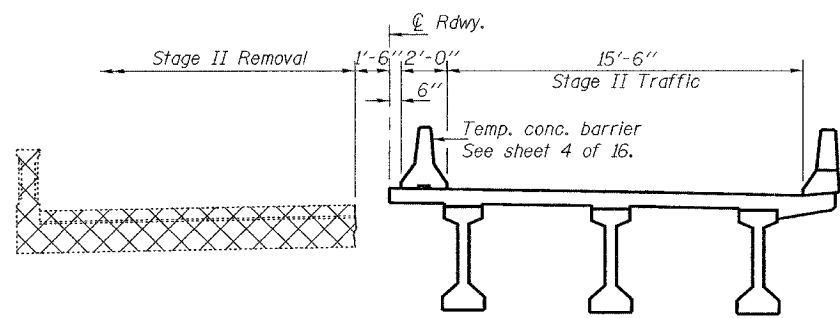
Contract No. 68247



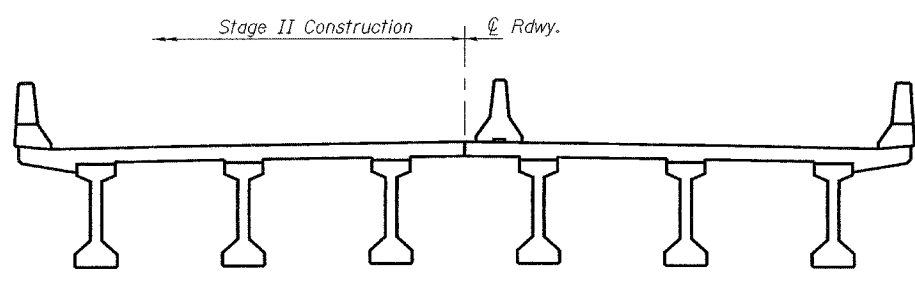
**STAGE I REMOVAL**



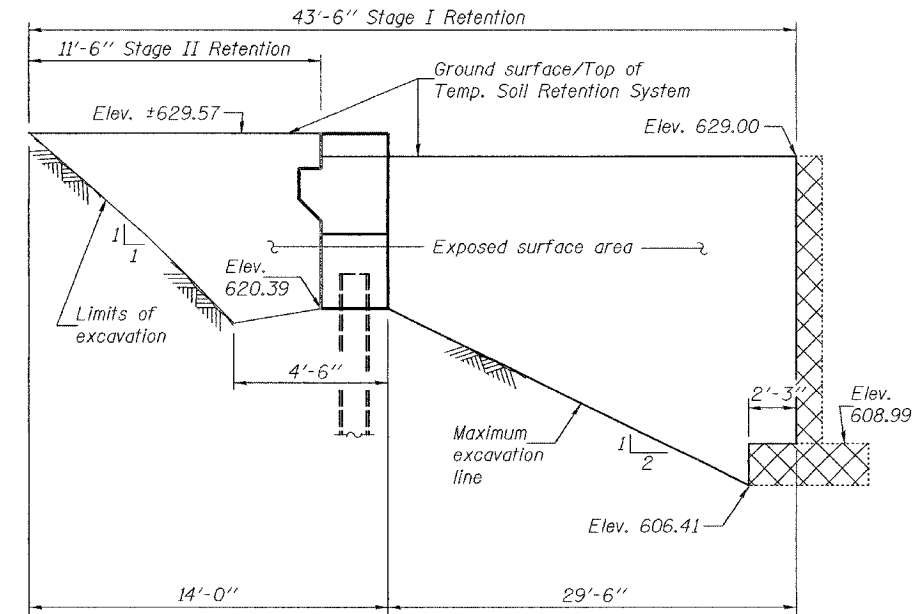
**STAGE I CONSTRUCTION**



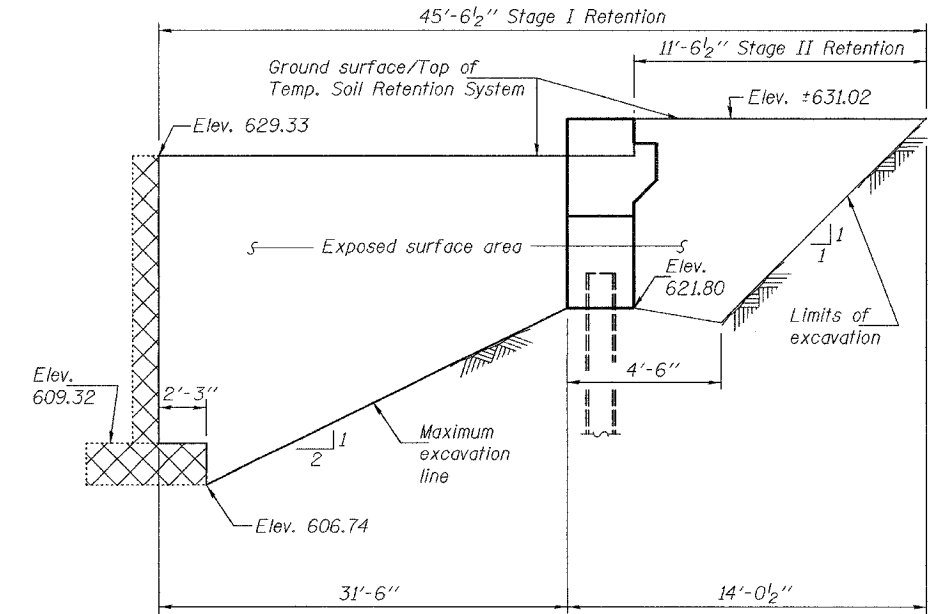
**STAGE II REMOVAL**



**STAGE II CONSTRUCTION**



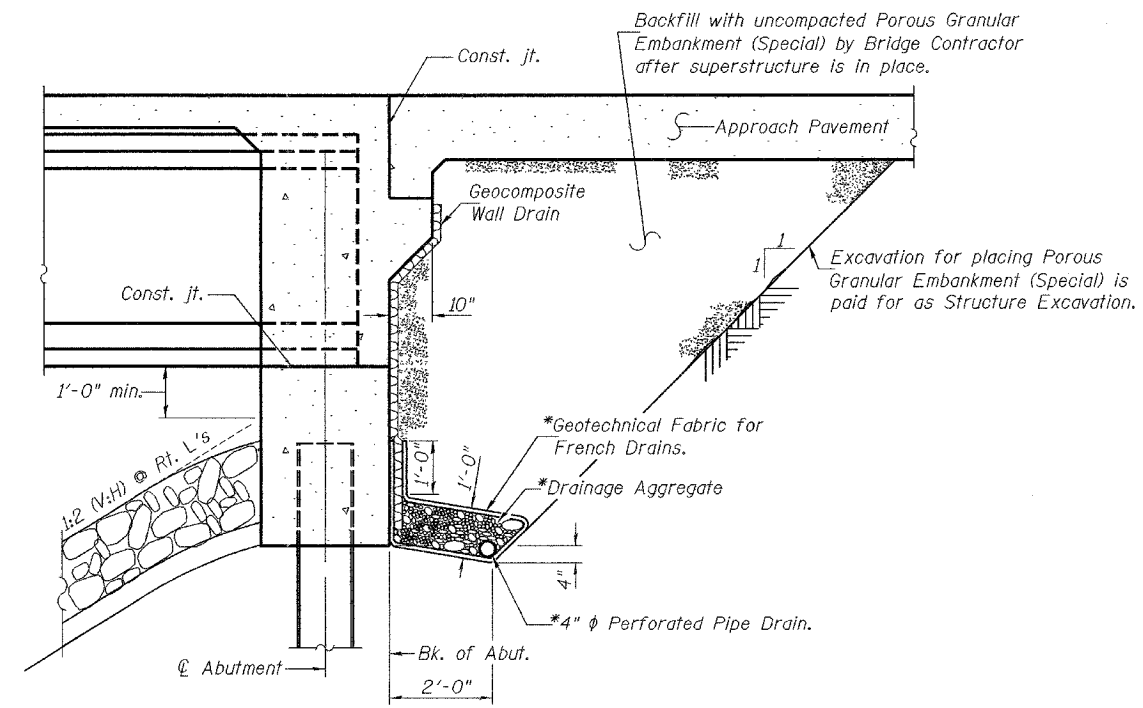
**EAST ABUTMENT**  
Looking south



**WEST ABUTMENT**  
Looking south

**TEMPORARY SOIL RETENTION SYSTEM**

A cantilevered sheet piling design does not appear feasible and additional members or other retention systems may be necessary. The Contractor shall submit a temporary soil retention system design including plan details and calculations for review and acceptance by the Engineer.



**SECTION THRU INTEGRAL ABUTMENT**

\* Cost included with Pipe Underdrains for Structures, 4".

Notes: Cross-hatched areas indicates Removal of Existing Structures.  
See roadway plans for quantity of temporary concrete barrier.  
All staging cross sections are looking west.  
All drainage components shall extend to 2'-0" from the end of each wingwall except an outlet pipe shall extend until intersecting with the side slopes. The pipe shall drain onto concrete headwalls. (See Article 601.05 of the Std. Spec's. and Highway Standard 601101).

DESIGNED	MDS
CHECKED	AJB/DFZ
DRAWN	h.t. duong
CHECKED	MDS/AJB

Sep. 12, 2006  
EXAMINED *Thomas J. Damagala*  
ENGINEER OF BRIDGE DESIGN  
PASSED *Ralph E. Anderson*  
ENGINEER OF BRIDGES AND STRUCTURES

**GENERAL DATA &  
STAGE CONSTRUCTION DETAILS  
F.A.U. 6769 - SECTION (8B)BR-4  
TAZEWELL COUNTY  
STATION 319+71  
STRUCTURE NO. 090-0173**