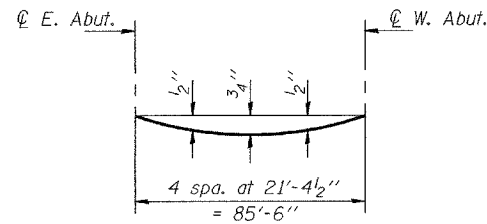


STATE OF ILLINOIS
DEPARTMENT OF TRANSPORTATION

ROUTE NO.	SECTION	COUNTY	DATE	SHEET	SHEET NO. 5 16 SHEETS
FAU 6769	(8B) BR-4	TAZEWELL	102	39	
FED. ROAD DIST. NO. 7	ILLINOIS	FED. AID PROJECT			

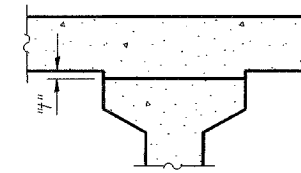
Contract No. 68247



DEAD LOAD DEFLECTION DIAGRAM

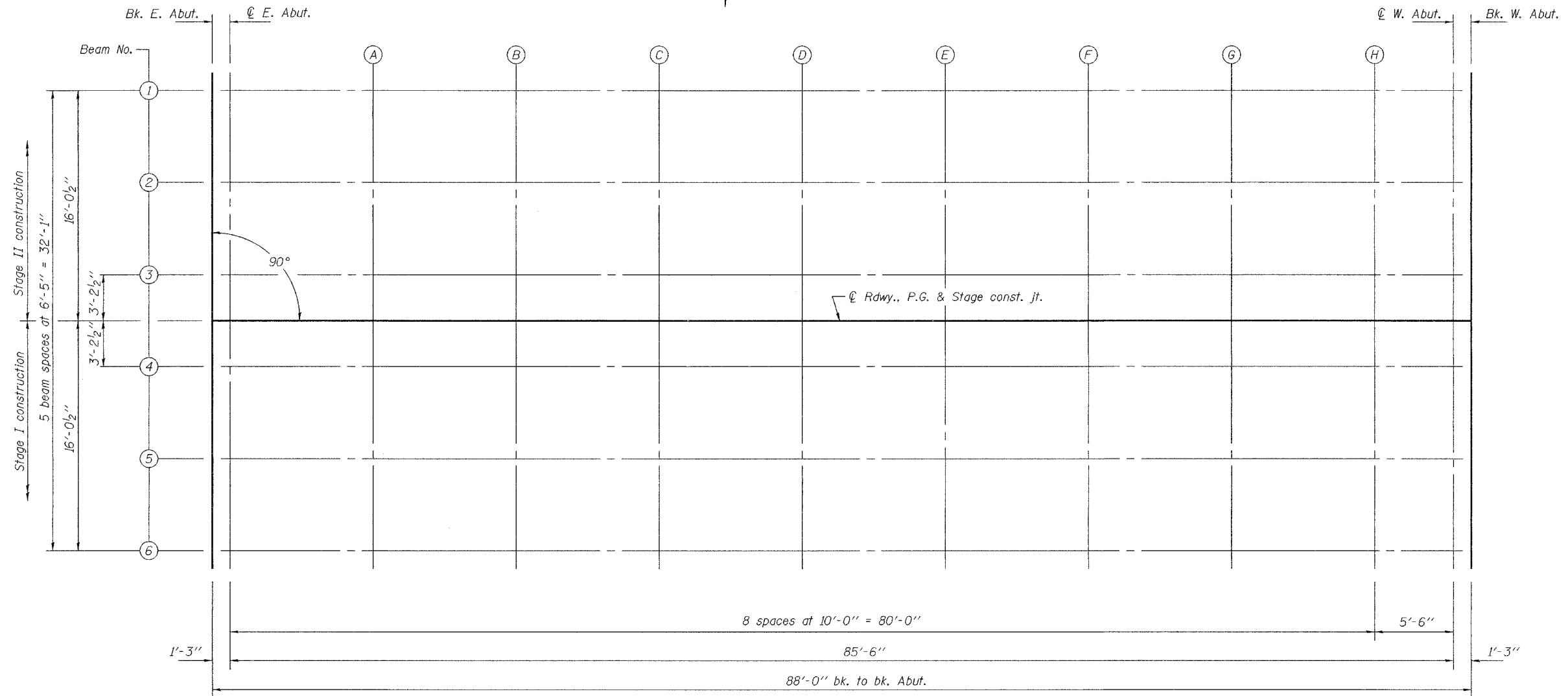
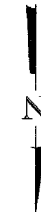
(Includes weight of concrete, excluding beams).

Note: The above deflections are not to be used in the field if the Engineer is working from the grade elevation adjusted for dead load deflections as shown on sheet 6 of 16.



To determine "t": After all precast prestressed beams have been erected, elevations of the top flanges of the beams shall be taken at intervals shown below. These elevations subtracted from the "Theoretical Grade Elevations Adjusted for Dead Load Deflections" shown on sheet 6 of 16, minus slab thickness, equal the fillet heights "t" above top flanges of beams.

FILLET HEIGHTS



PLAN

DESIGNED	MDS
CHECKED	DFZ/AJB
DRAWN	h.t. duong
CHECKED	MDS/AJB

Sep. 12, 2006
EXAMINED *Thomas J. Damagala*
ENGINEER OF BRIDGE DESIGN
PASSED *Ralph E. Anderson*
ENGINEER OF BRIDGES AND STRUCTURES

TOP OF SLAB ELEVATIONS
F.A.U. 6769 - SECTION (8B)BR-4
TAZEWELL COUNTY
STATION 319+71
STRUCTURE NO. 090-0173