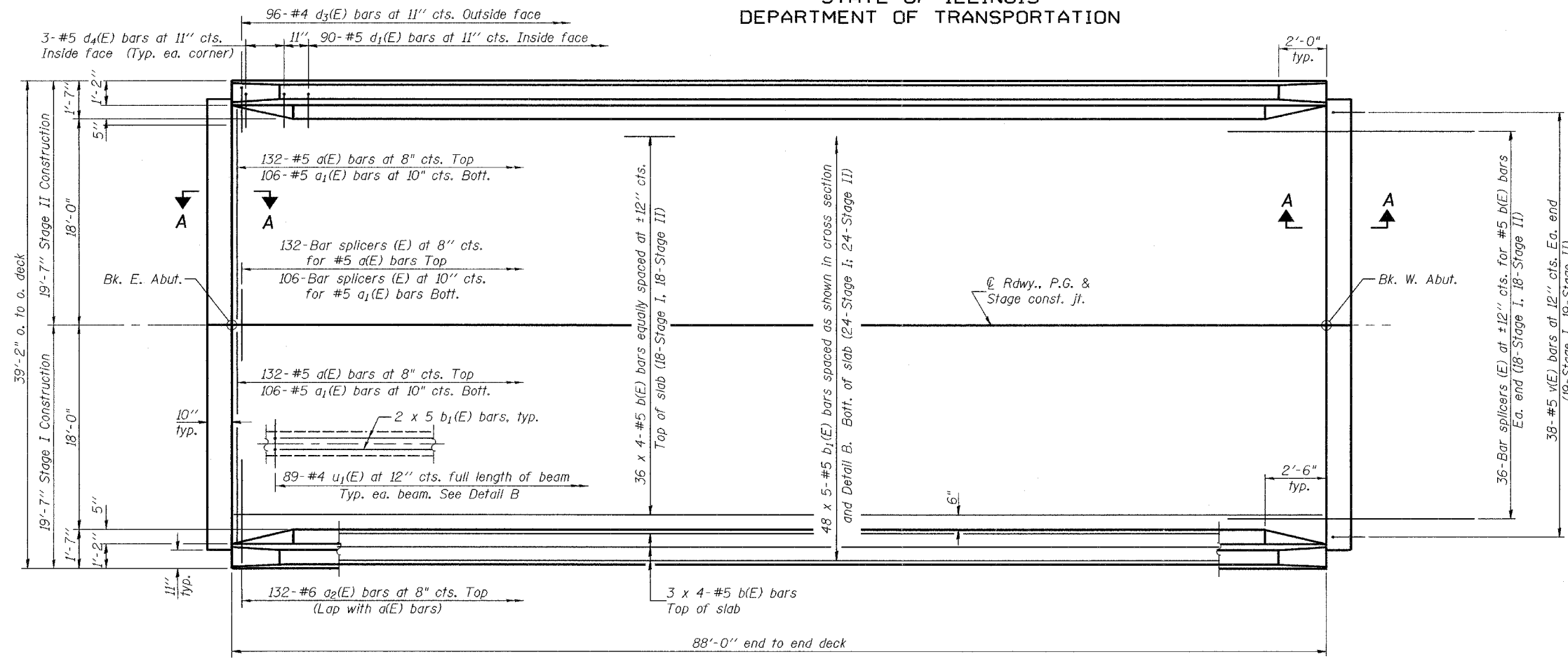


STATE OF ILLINOIS
DEPARTMENT OF TRANSPORTATION

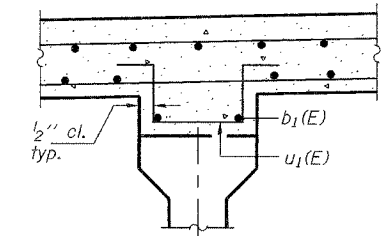
ROUTE NO.	SECTION	COUNTY	SHEET NO.	SHEET NO.
FAU 6769	(8B) BR-4	TAZEWELL	102	41
ILLINOIS		FED. AID PROJECT		

Contract No. 68247

SHEET NO. 7
16 SHEETS



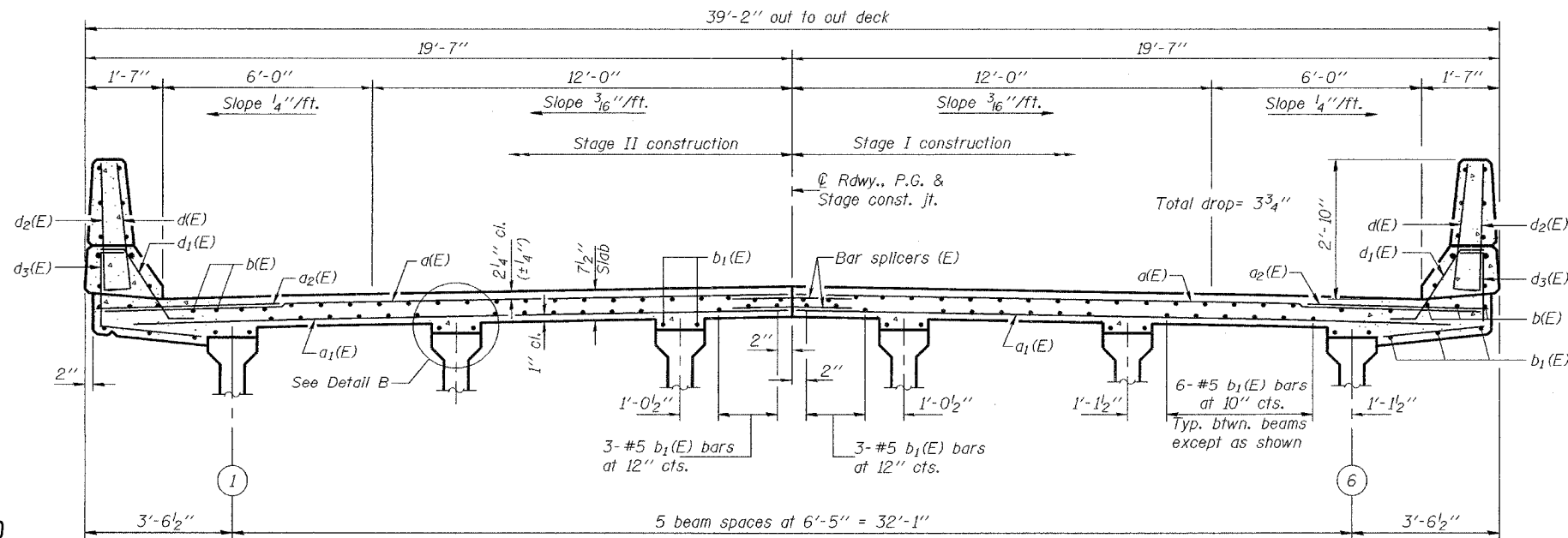
PLAN



DETAIL B
Typical each beam

Notes: See sheet 8 of 16 for superstructure details and Bill of Material.
See sheet 9 of 16 for Section A-A and diaphragm details.
Reinforcement bars designated (E) shall be epoxy coated.
Bars indicated thus 36 x 4-#5 etc. indicates 36 lines of bars with 4 lengths per line.
See sheet 15 of 16 for bar splicer details.

MIN. BAR LAP
#5 bar = 2'-2"



CROSS SECTION
(Looking west)

DESIGNED	MDS
CHECKED	DFZ/AJB
DRAWN	h.t. duong
CHECKED	MDS/AJB

Sep. 12, 2006
EXAMINED *Thomas J. Domagalala*
ENGINEER OF BRIDGE DESIGN
PASSED *Ralph E. Anderson*
ENGINEER OF BRIDGES AND STRUCTURES

SUPERSTRUCTURE
F.A.U. 6769 - SECTION (8B)BR-4
TAZEWELL COUNTY
STATION 319+71
STRUCTURE NO. 090-0173