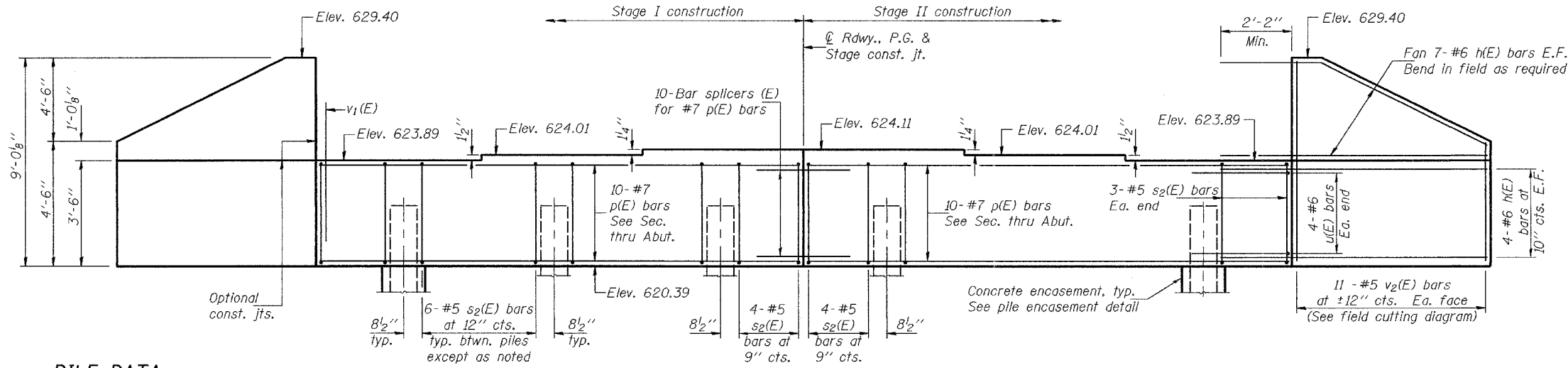


Notes: Pour steps monolithically with cap.
Reinforcement bars designated (E)
shall be epoxy coated.
For bar splicer details, see sheet 15
of 16.

STATE OF ILLINOIS
DEPARTMENT OF TRANSPORTATION

ROUTE NO.	SECTION	COUNTY	TOTAL SHEETS	SHEET NO.	SHEET NO. 13
FAU 6769	(8B) BR-4	TAZEWELL	102	47	16 SHEETS
FED. ROAD DIST. NO. 7	ILLINOIS	FED. AID PROJECT-			

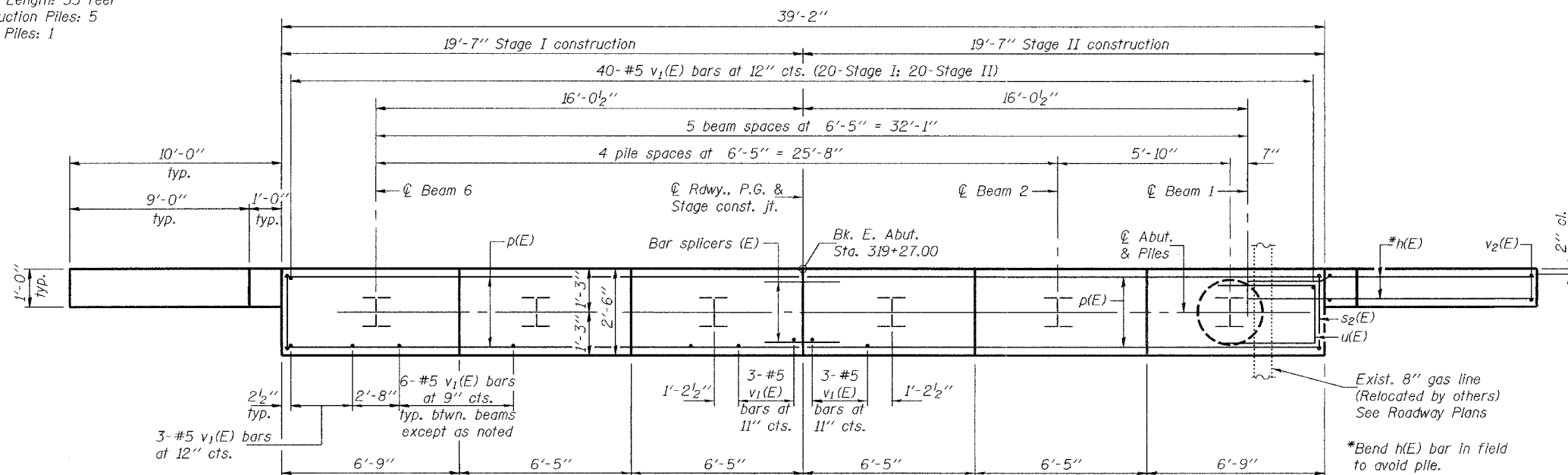
Contract No. 68247



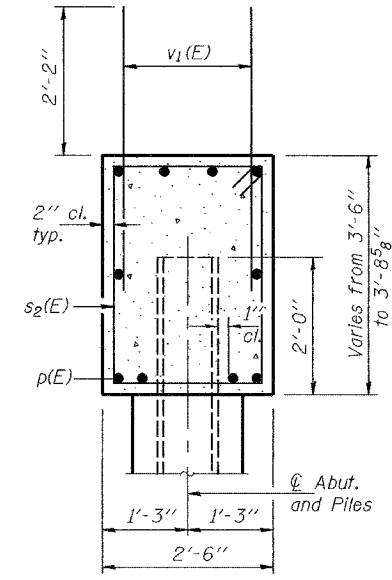
ELEVATION
(Looking east)

PILE DATA

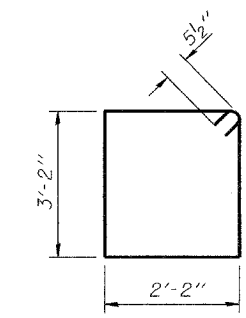
Type: Steel HP12x74
Nominal Required Bearing: 589 kips
Factored Resistance Available: 295 kips
Est. Pile Lengths: 53 feet
No. Production Piles: 5
No. Test Piles: 1



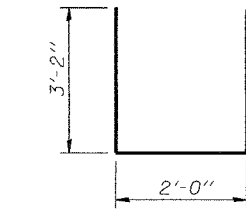
PLAN



SEC. THRU ABUT.



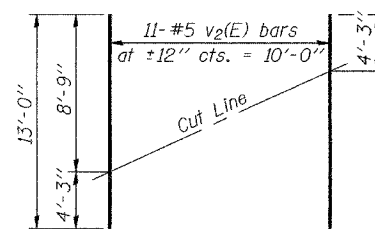
BAR s2(E)



BAR u(E)

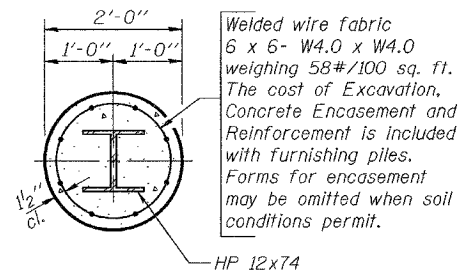
BILL OF MATERIAL

Bar	No.	Size	Length	Shape
h(E)	44	#6	13'-3"	
p(E)	20	#7	19'-4"	
s2(E)	38	#5	11'-7"	□
u(E)	8	#6	8'-4"	□
v1(E)	76	#5	4'-4"	
v2(E)	22	#5	13'-0"	
Concrete Structures			Cu. Yd.	18.3
Reinforcement Bars, Epoxy Coated			Pound	2870
Structure Excavation			Cu. Yd.	50
Furnishing Steel Piles HP12x74			Foot	265
Driving Piles			Foot	265
Test Pile Steel HP12x74			Each	1



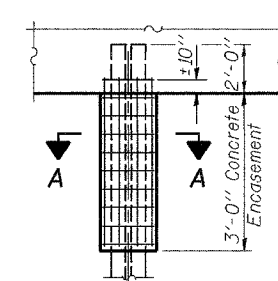
FIELD CUTTING DIAGRAM

Order v2(E) full length. Cut as shown and use remainder of bars in opposite face.



SECTION A-A

PILE ENCASEMENT DETAIL



DESIGNED	MDS
CHECKED	DFZ/AJB
DRAWN	h.f. duong
CHECKED	MDS/AJB

Sep. 12, 2006
EXAMINED *Thomas J. Romagallo*
PASSED *Ralph E. Anderson*
ENGINEER OF BRIDGES AND STRUCTURES

EAST ABUTMENT
F.A.U. 6769 - SECTION (8B)BR-4
TAZEWELL COUNTY
STATION 319+71
STRUCTURE NO. 090-0173