

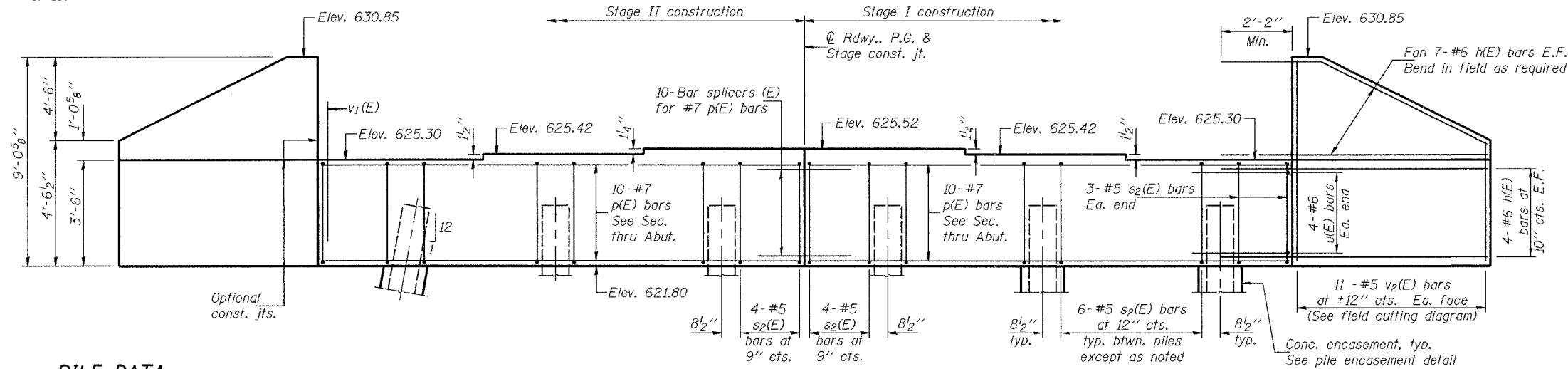
Notes: Pour steps monolithically with cap.
Reinforcement bars designated (E)
shall be epoxy coated.
For bar splicer details, see sheet 15
of 16.

STATE OF ILLINOIS
DEPARTMENT OF TRANSPORTATION

ROUTE NO.	SECTION	COUNTY	STATE	SHEET NO.
FAU 6769	(8B) BR-4	TAZEWELL	102	48
FED. ROAD DIST. NO. 7	ILLINOIS	FED. AID PROJECT-		

Contract No. 68247

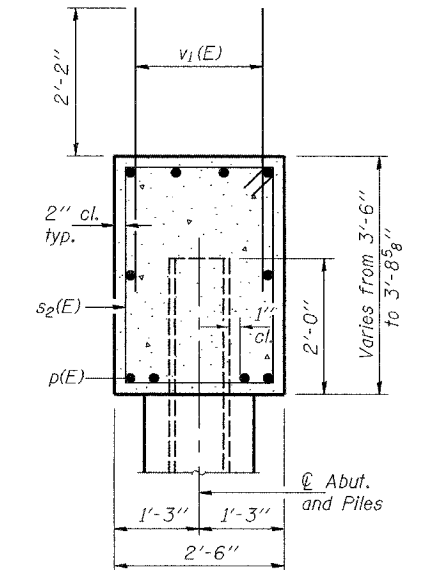
SHEET NO. 14
16 SHEETS



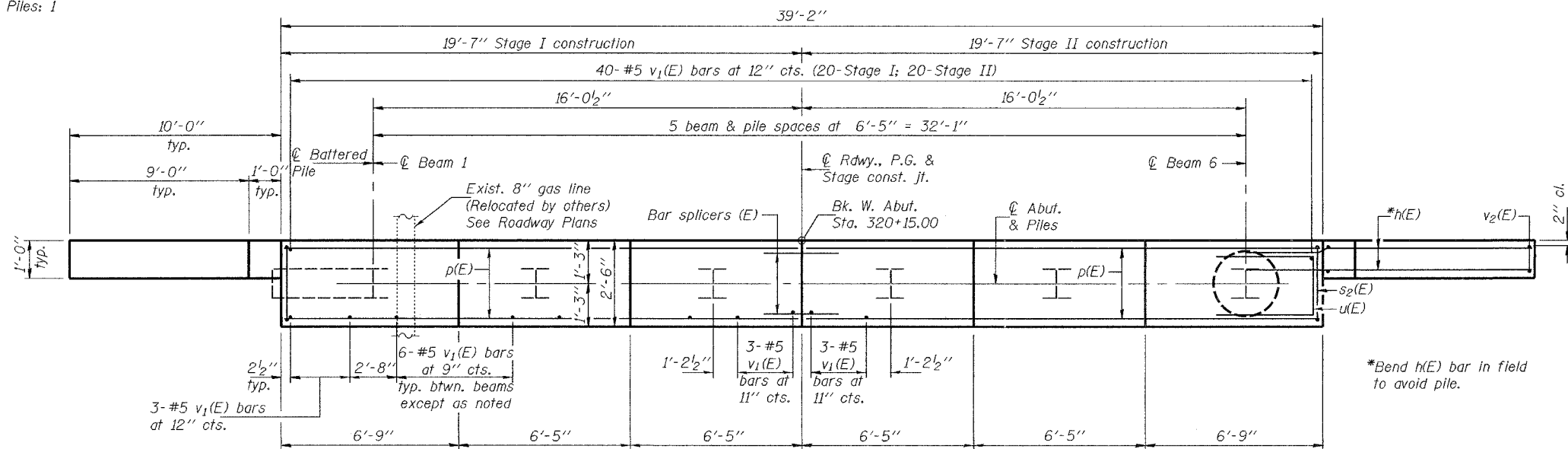
ELEVATION
(Looking west)

PILE DATA

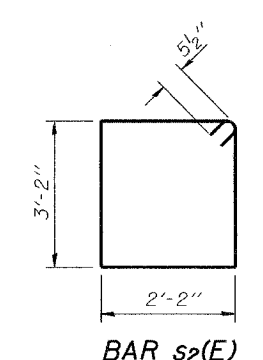
Type: Steel HP12x74
Nominal Required Bearing: 531 kips
Factored Resistance Available: 266 kips
Est. Pile Length: 50 feet
No. Production Piles: 5
No. Test Piles: 1



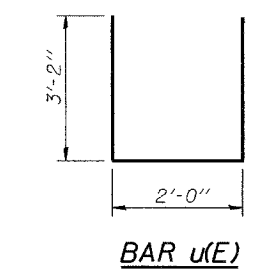
SEC. THRU ABUT.



PLAN



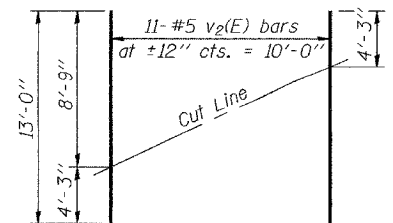
BAR s2(E)



BAR u(E)

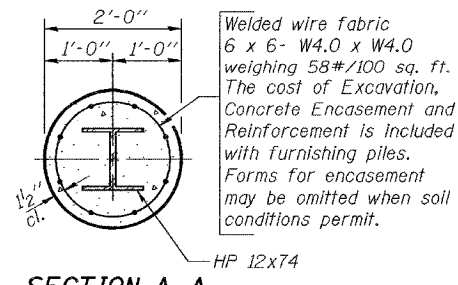
BILL OF MATERIAL

Bar	No.	Size	Length	Shape
h(E)	44	#6	13'-3"	—
p(E)	20	#7	19'-4"	—
s2(E)	38	#5	11'-7"	□
u(E)	8	#6	8'-4"	□
v1(E)	76	#5	4'-4"	—
v2(E)	22	#5	13'-0"	—
Concrete Structures		Cu. Yd.	18.3	
Reinforcement Bars, Epoxy Coated		Pound	2870	
Structure Excavation		Cu. Yd.	50	
Furnishing Steel Piles HP12x74		Foot	250	
Driving Piles		Foot	250	
Test Pile Steel HP12x74		Foot	1	

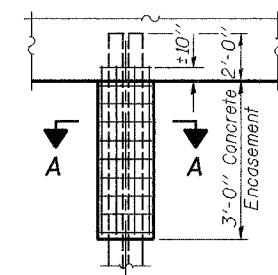


FIELD CUTTING DIAGRAM

Order v2(E) full length. Cut as shown and use remainder of bars in opposite face.



SECTION A-A



PILE ENCASEMENT DETAIL

DESIGNED	MDS
CHECKED	DFZ/AJB
DRAWN	h.t. duong
CHECKED	MDS/AJB

Sep. 12, 2006
EXAMINED *Thomas J. Damagala*
ENGINEER OF BRIDGE DESIGN
PASSED *Rafael E. Anderson*
ENGINEER OF BRIDGES AND STRUCTURES

WEST ABUTMENT
F.A.U. 6769 - SECTION (8B)BR-4
TAZEWELL COUNTY
STATION 319+71
STRUCTURE NO. 090-0173