

F.A.U. RTE.	SECTION	COUNTY	TOTAL SHEETS	SHEET NO.
6769	(88)BR-4	TAZEWELL	102	52
STA. 308+58		TO STA. 329+41		
FED. ROAD DIST. NO. 4		ILLINOIS	FED. AID PROJECT	

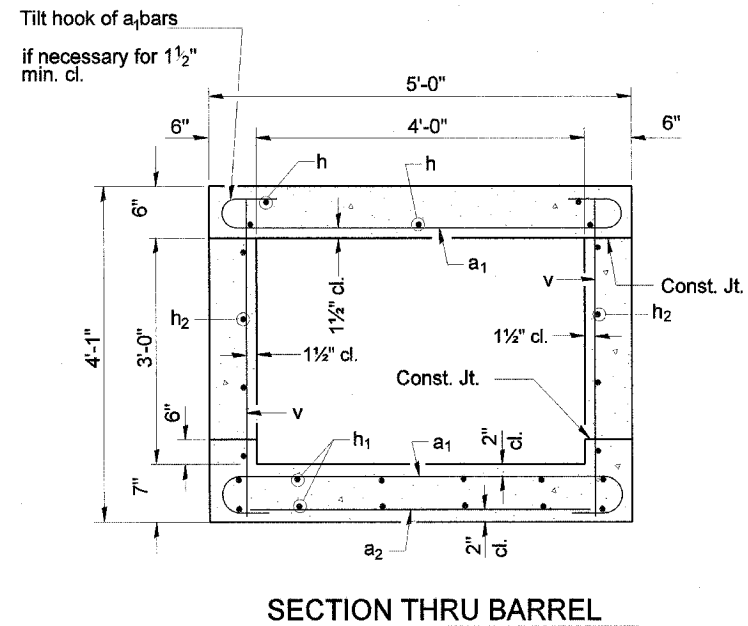
## BILL OF MATERIAL

Bar	No.	Size	Length	Shape
a <sub>1</sub>	40	#4	5'-8"	
a <sub>2</sub>	8	#4	4'-4"	
d	4	#4	4'-6"	
h	7	#5	13'-1"	
h <sub>1</sub>	10	#4	13'-1"	
h <sub>2</sub>	6	#5	13'-1"	
h <sub>3</sub>	7	#4	8'-0"	
h <sub>4</sub>	6	#6	5'-4"	
h <sub>5</sub>	6	#4	5'-4"	
h <sub>6</sub>	7	#4	7'-3 3/4"	
h <sub>7</sub>	7	#4	8'-0"	
h <sub>8</sub>	7	#4	7'-3 3/4"	
v	38	#4	3'-9"	
v <sub>1</sub>	8	#4	6'-8"	
S	10	#4	3'-9"	
3/4" Anchor Bolts			Each	10
Concrete Box Culverts			Cu. Yd.	6.6
Reinforcement Bars			Pound	815

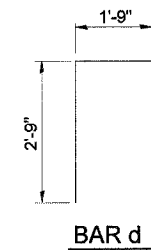
### DESIGN STRESSES

f<sub>y</sub> = 60,000 psi  
f<sub>c</sub> = 3,500 psi

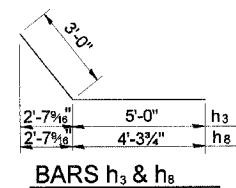
### LOADING HS 20-44 & ALT.



SECTION THRU BARREL



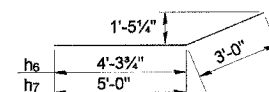
BAR d



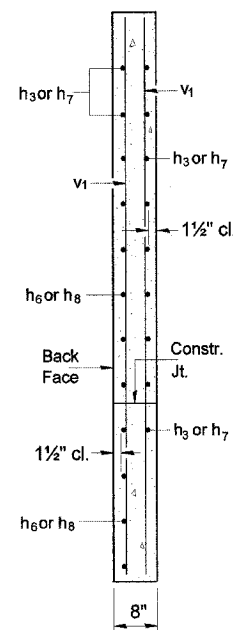
BARS h<sub>3</sub> & h<sub>8</sub>



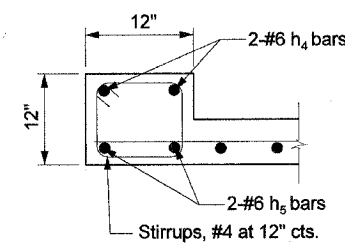
BAR a<sub>1</sub>



BARS h<sub>6</sub> & h<sub>7</sub>



SECTION A-A



SECTION THRU HEADWALL

REVISIONS	
NAME	DATE

ILLINOIS DEPARTMENT OF TRANSPORTATION

### Culvert Extension Detail Lt Sta. 312+12.73 (4' x 3' Box Culvert)

SCALE: VERT.  
HORIZ.  
DATE

DRAWN BY  
CHECKED BY