

F.A.U. RTE.	SECTION	COUNTY	TOTAL SHEETS	SHEET NO.
6799	(8)BR-4	TAZEWELL	102	54
STA. 308+58		TO STA. 329+41		
FED. ROAD DIST. NO. 4		ILLINOIS FED. AID PROJECT		

BILL OF MATERIAL

Bar	No.	Size	Length	Shape
a ₁	40	#4	5'-8"	
a ₂	7	#4	4'-4"	
a ₃	9	#4	9'-9"	
a ₄	4	#4	9'-9"	
d	61	#4	6'-1"	
h	7	#5	13'-4"	
h ₁	5	#4	18'-4"	
h ₂	6	#5	13'-4"	
h ₃	5	#4	13'-6"	
h ₄	4	#6	5'-4"	
h ₅	2	#6	5'-4"	
h ₆	5	#4	5'-9"	
h ₇	11	#4	5'-9"	
h ₈	4	#4	6'-11"	
h ₉	4	#4	6'-8"	
S	10	#4	3'-9"	
U	6	#4	13'-8"	
U ₁	6	#4	11'-4 1/2"	
U ₂	2	#4	17'-1"	
U ₃	2	#4	14'-2"	
V	32	#4	3'-9"	
3/4" Anchor Bolts		Each	10	
Concrete Box Culverts		Cu. Yd.	9.5	
Reinforcement Bars		Pound	1,221.10	

DESIGN STRESSES

f_y = 60,000 psi
f_c = 3,500 psi

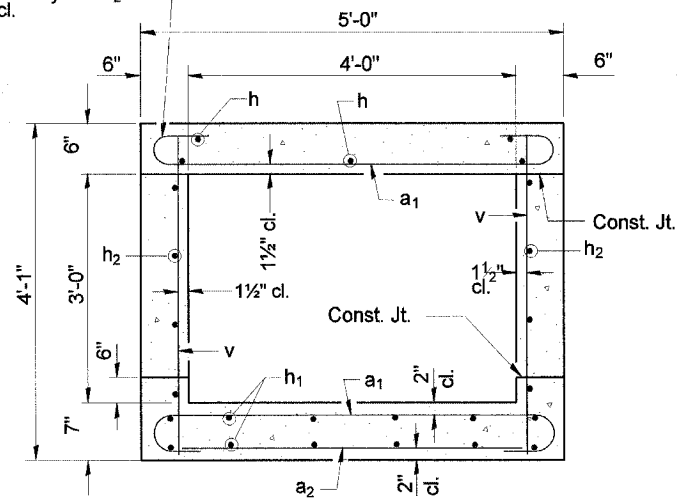
LOADING HS 20-44 & ALT.

REVISIONS	
NAME	DATE

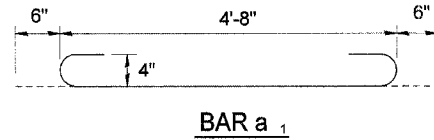
ILLINOIS DEPARTMENT OF TRANSPORTATION
**Culvert Extension Detail
& Drop Box Detail**
Rt Sta. 312+12.73
(4' x 3' Box Culvert)

SCALE: VERT. HORIZ.
DATE: DRAWN BY: CHECKED BY:

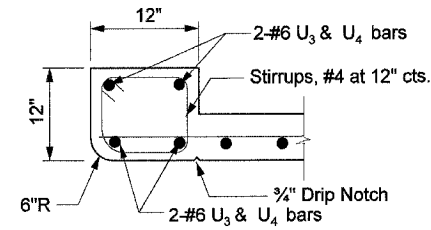
Tilt hook of a bars
if necessary for 1 1/2" min. cl.



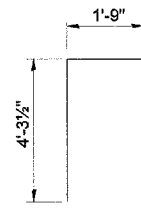
SECTION THRU BARREL



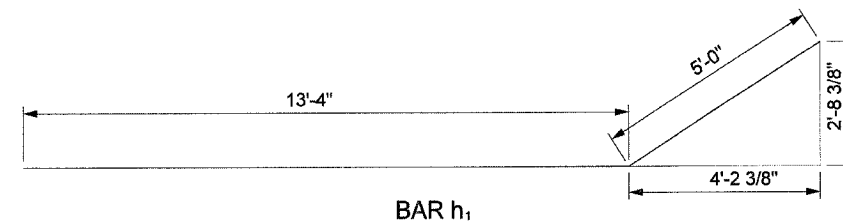
BAR a₁



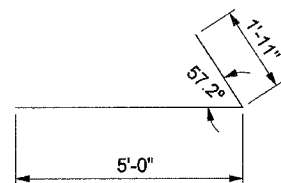
SECTION THRU HEADWALL



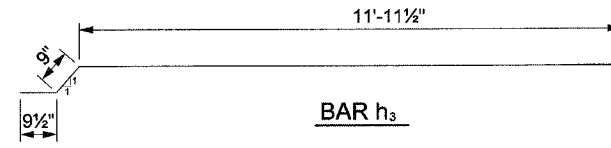
BAR d



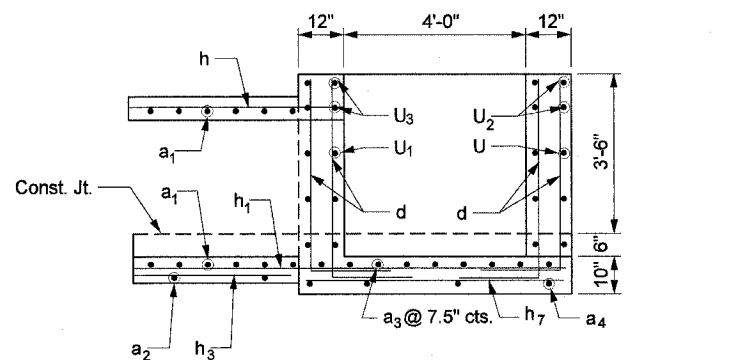
BAR h₁



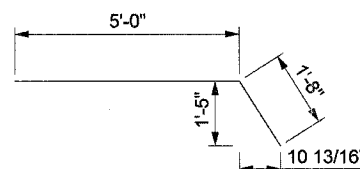
BAR h₂



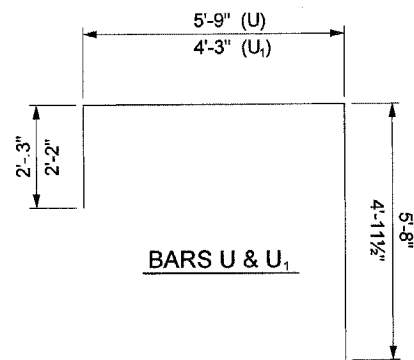
BAR h₃



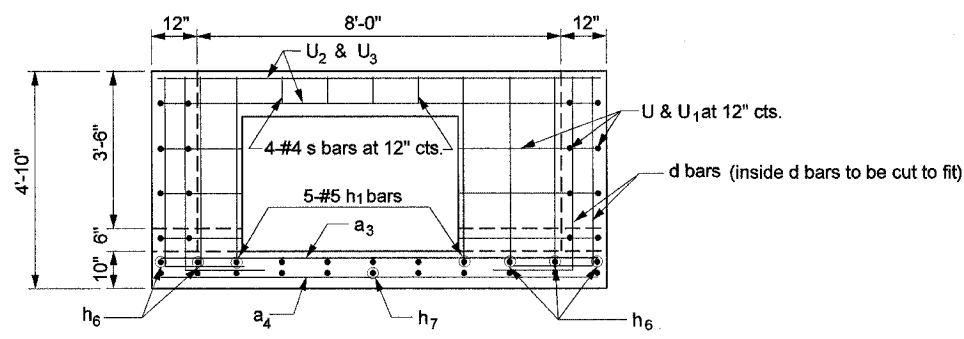
SECTION A-A



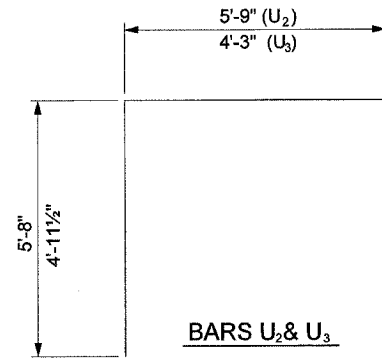
BAR h₄



BARS U & U₁



SECTION B-B



BARS U₂ & U₃