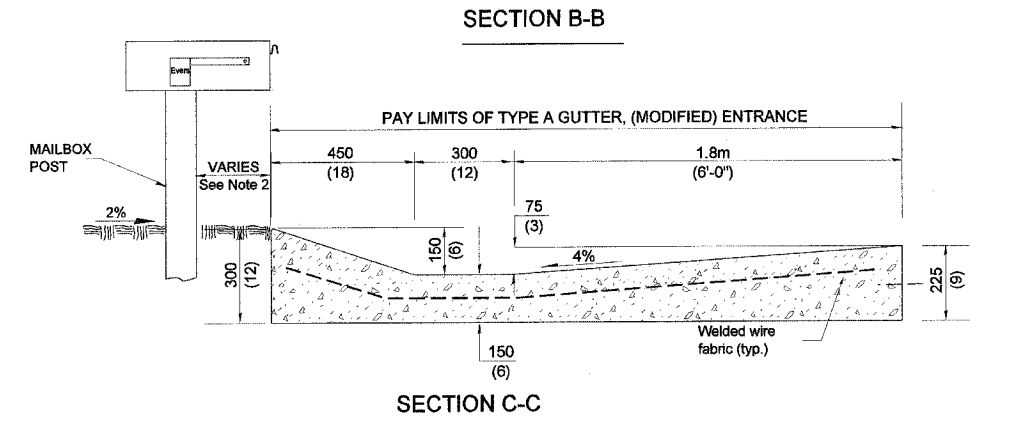
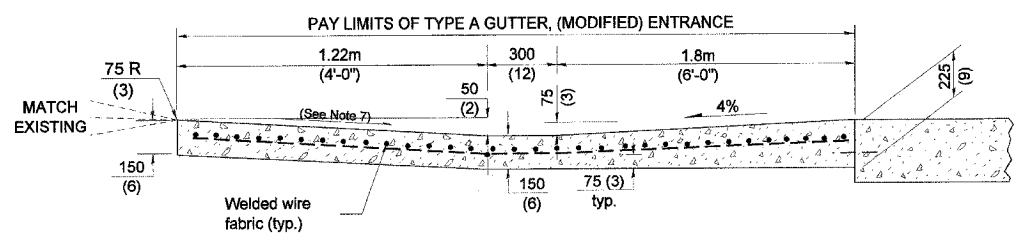
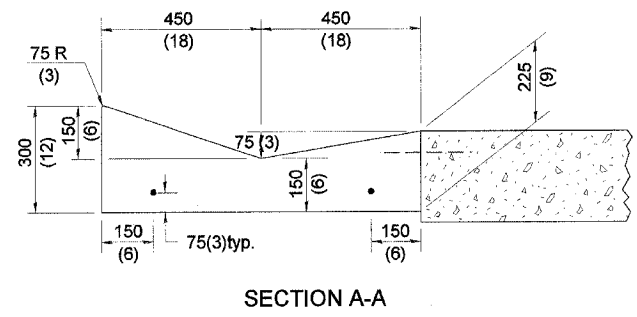
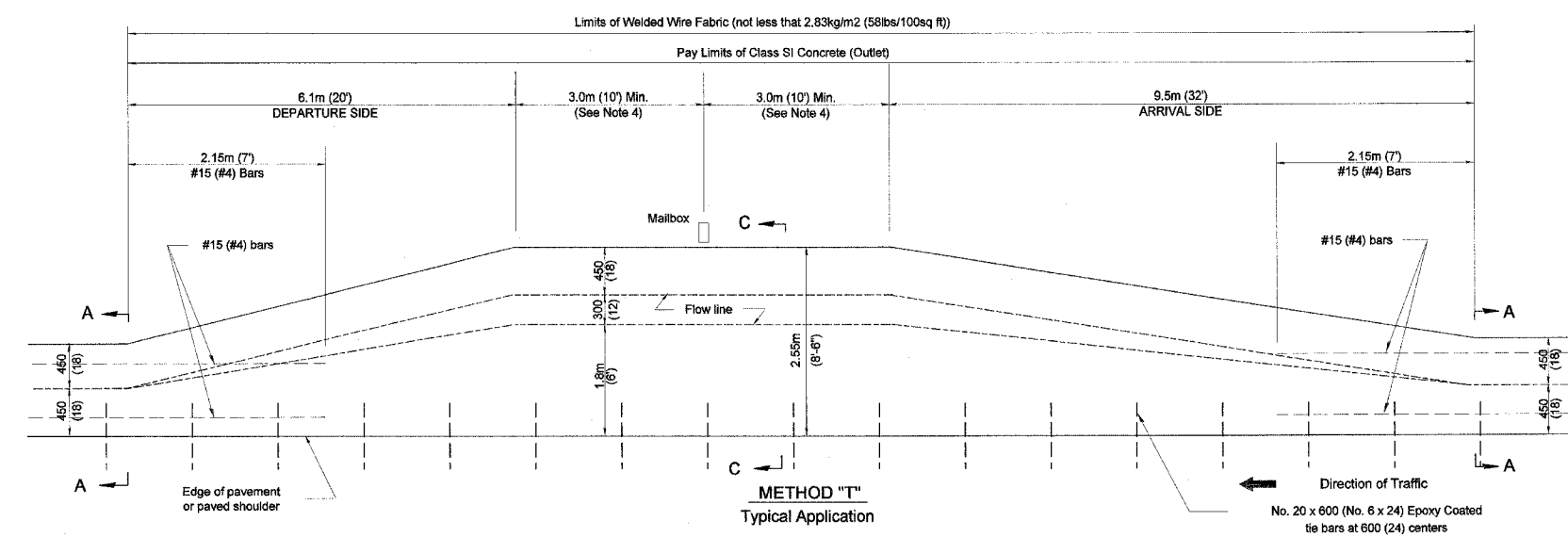


F.A.U. RTE.	SECTION	COUNTY	TOTAL SHEETS	SHEET NO.
6789	(8B) BR-4	TAZEWELL	102	66
STA. 308+58		TO STA. 329+21		
FED. ROAD DIST. NO. 4		ILLINOIS	FED. AID PROJECT	

DESIGNER NOTE
 1. CONSIDERATION SHOULD BE GIVEN TO CONTINUOUS PAVING OF TURNOUTS AT LOCATIONS WHERE THE DISTANCE BETWEEN TURNOUT CONTROL POINTS IS LESS THAN 15.0 m (50').
 2. THIS DRAWING SHOULD BE USED IF THERE IS NOT A PAVED SHOULDER OR IF THE PAVED SHOULDER IS LESS THAN 1.83m (6 FT).

\$\$\$DATE\$\$



LOCATION	LENGTH	CUM / M	CU YD / FT
Arrival Side	9.5 m (32 ft)	0.35	0.14
Section B-B	3.6 m (12 ft) Min.	0.57	0.23
Section C-C	6.0 m (20 ft) Min.	0.50	0.20
Departure Side	6.1 m (20 ft)	0.35	0.14

- GENERAL NOTES**
- See plans for turnout slopes on super elevated horizontal curves.
 - Mailboxes shall be mounted such that the face of the mailbox is vertically above the back of the gutter.
 - The mailbox turnout shall be saw cut at approximately 3.0 m (10'-0") centers.
 - If more than one mailbox is present, this dimension shall be measured from the end box in each direction.
 - Refer to the plans for entrance width, length and surface type.
 - The cross slope is to be constructed as given in the plans from back of turnout to where driveway matches existing.
 - Slope may be increased from 4% (min.) to 6% (max.) in order to match the existing.

All dimensions are in millimeters (inches) unless otherwise noted.

ILLINOIS DEPARTMENT OF TRANSPORTATION
DISTRICT CADD STANDARD

MAILBOX TURNOUTS IN TYPE A GUTTER, (MODIFIED) SECTION

CADD STD NO. 406211-D4
SCALE: NOT DRAWN TO SCALE
DATE: \$\$\$DATE\$\$

DRAWN BY: CADD
CHECKED BY: T. PICKERING

DATE	REVISIONS	BY

