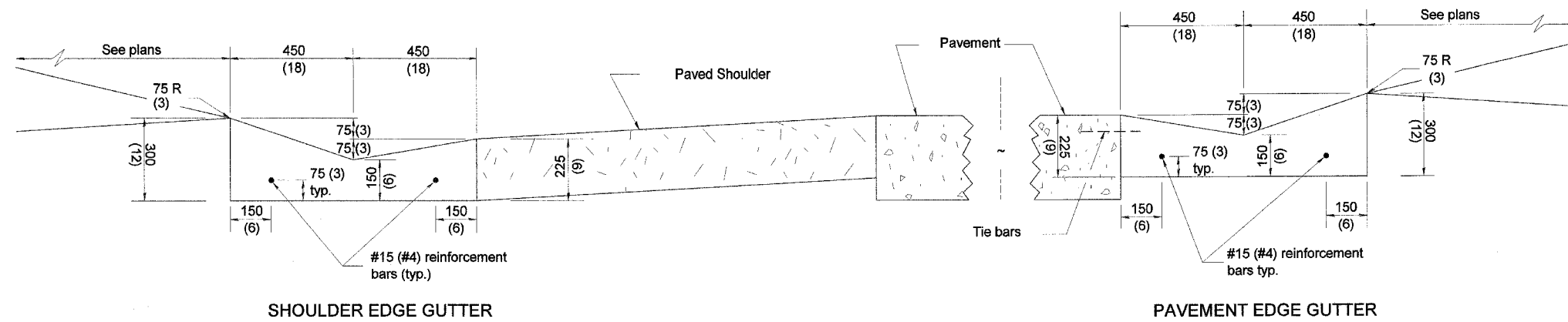


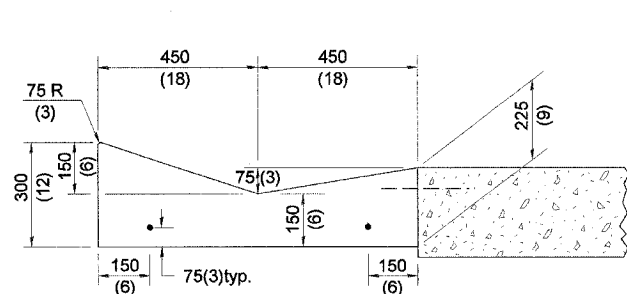
F.A.U. RTE.	SECTION	COUNTY	TOTAL SHEETS	SHEET NO.
6769	(8B) BR-4	TAZEWELL	102	68
STA. 308+56		TO STA. 329+21		
FED. ROAD DIST. NO. 4		ILLINOIS	FED. AID PROJECT	



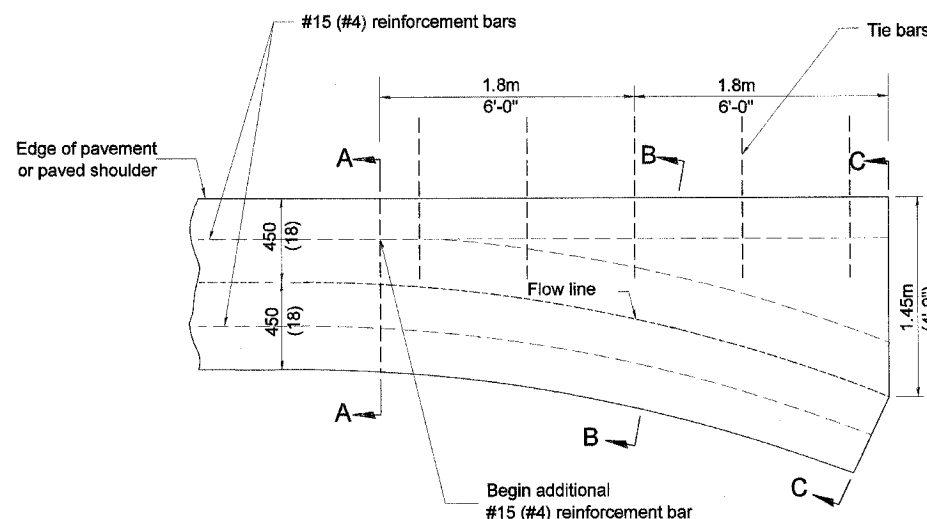
SHOULDER EDGE GUTTER

PAVEMENT EDGE GUTTER

TYPE A GUTTER (MODIFIED)



SECTION A-A

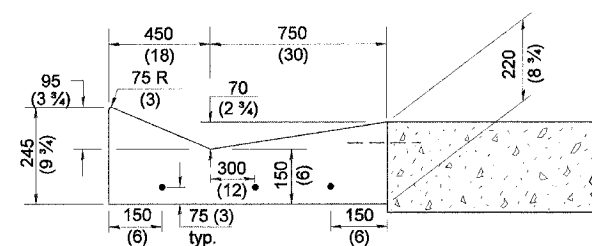


PLAN

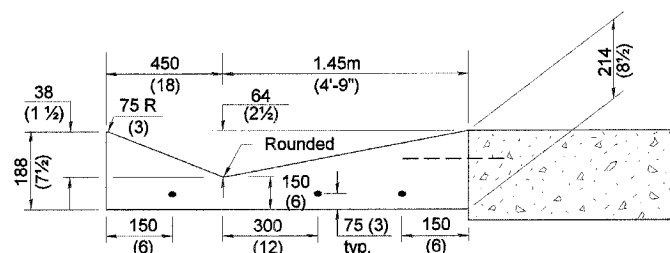
QUANTITY	
Section C-C to A-A	1.2 cu. yd. concrete.

GENERAL NOTES:

- TYPE A GUTTER (MODIFIED) shall conform to the applicable portions of Section 606.
- Tie bars shall be No. 20 (No. 6) at 600mm (24") centers unless otherwise shown.
- Gutter, gutter inlets, gutter outlets, and gutter entrances shall be tied to rigid pavement in accordance with details shown on Standard 420001.
- Joints shall be constructed in accordance with Article 606.06.
- Welded wire fabric shall conform to Article 1006.10(c)(1), and shall not be less than 2.83 kg/m (58 lbs/400 sq.ft.).



SECTION B-B



SECTION C-C

INLET

DESIGNER NOTE
1. INCLUDE STATE STANDARD 420001
2. INCLUDE DISTRICT SPECIAL PROVISION.

QUANTITIES	
CALC. BY: LCE	MAY 18, 2006
CHECKED BY:	DATE:
QUANTITY CALCULATIONS ARE ON FILE AT THE DISTRICT 4 OFFICE; BUREAU OF PROJECT IMPLEMENTATION; DOCUMENTATION SECTION	

All dimensions are in millimeters (inches) unless otherwise noted.

ILLINOIS DEPARTMENT OF TRANSPORTATION
DISTRICT CADD STANDARD

TYPE A GUTTER, (MODIFIED)
(INLET, OUTLET & ENTRANCE)

CADD STANDARD 606101-D4 SHEET 1 OF 3
SCALE: NOT DRAWN TO SCALE DRAWN BY CADD
DATE \$\$\$DATE\$\$\$ CHECKED BY

DATE	REVISIONS	BY
1-1-97	RENUM. A-1.02, NEW REVISION	T.P.
	BOX, ELIMINATED EXPANSION ANCHOR TIES.	
2-28-02	ENTRANCE TYPICALS REVISED	M.A.