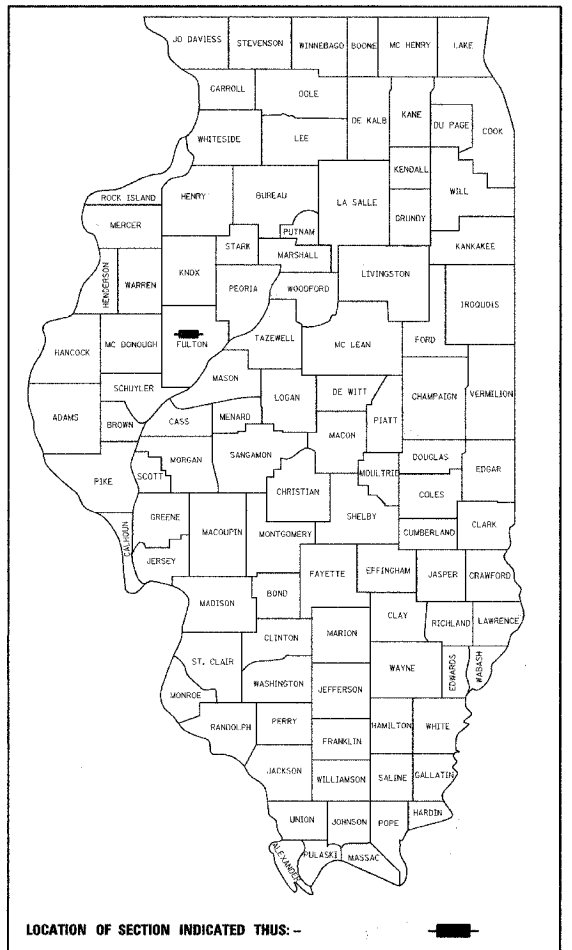


FAP ROUTE	SECTION	COUNTY	TOTAL SHEETS	SHEET NO.
622	(128BR)	FULTON	19	1
FED. ROAD DIST. NO.		ILLINOIS	FED. AID PROJECT	

CONTRACT NO. 68483
 CATALOG NO. 033064-00D
 D-94-074-05



STATE OF ILLINOIS
 DEPARTMENT OF TRANSPORTATION
 DIVISION OF HIGHWAYS
**PROPOSED
 HIGHWAY PLANS**

FAP ROUTE 622 (IL RTE 97)
 SECTION (128BR)I
 PROJECT NO. BHF-0622(007)
 FULTON COUNTY
 DECK BEAM REPLACEMENT
 C-94-074-05

INDEX OF SHEETS

- 1 COVER SHEET
- 2 GENERAL NOTES
- 3 SUMMARY OF QUANTITIES
- 4 TYPICAL SECTIONS
- 5 GENERAL SITE PLAN
- 6 RESURFACING DETAIL (BRIDGE APPROACH TAPERBUTT JOINT)
- 7-8 STAGE CONSTRUCTION PLANS
- 9 WIDE LOAD SIGN LOCATION
- 10-19 BRIDGE PLANS

STANDARDS

- 420401-05
- 630001-06
- 630301-03
- 631031-05
- 631032-02
- 635006-02
- 635011-01
- 701306-01
- 701321-08
- 701326-02
- 702001-06
- 704001-02
- 780001-01
- 781001-02

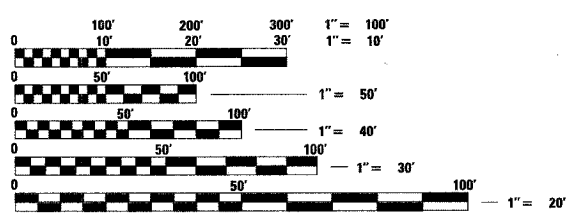
COMMITMENTS

NONE

SCALES
 PLAN = 1" = 30'
 PROFILE HORIZ. = 1" = 30'
 PROFILE VERT. = 1" = 5'
 CROSS SECTIONS = 1" = 10' HORIZ.
 1" = 5' VERT.

DESCRIPTION OF WORK

THE PROPOSED IMPROVEMENTS CONSIST OF REMOVAL OF THE EXISTING BRIDGE SUPERSTRUCTURE AND REPLACING WITH PRECAST, PRESTRESSED CONCRETE DECK BEAMS, CONCRETE WEARING SURFACE AND OTHER APPURTENANT ITEMS OF WORK. THE CONTRACTOR SHALL BE RESPONSIBLE FOR FURNISHING ALL LABOR, EQUIPMENT AND MATERIALS NECESSARY TO SATISFACTORILY CONSTRUCT THE PROJECT IN ACCORDANCE WITH THE PLANS, SPECIFICATIONS AND PROVISIONS STATED HEREIN.

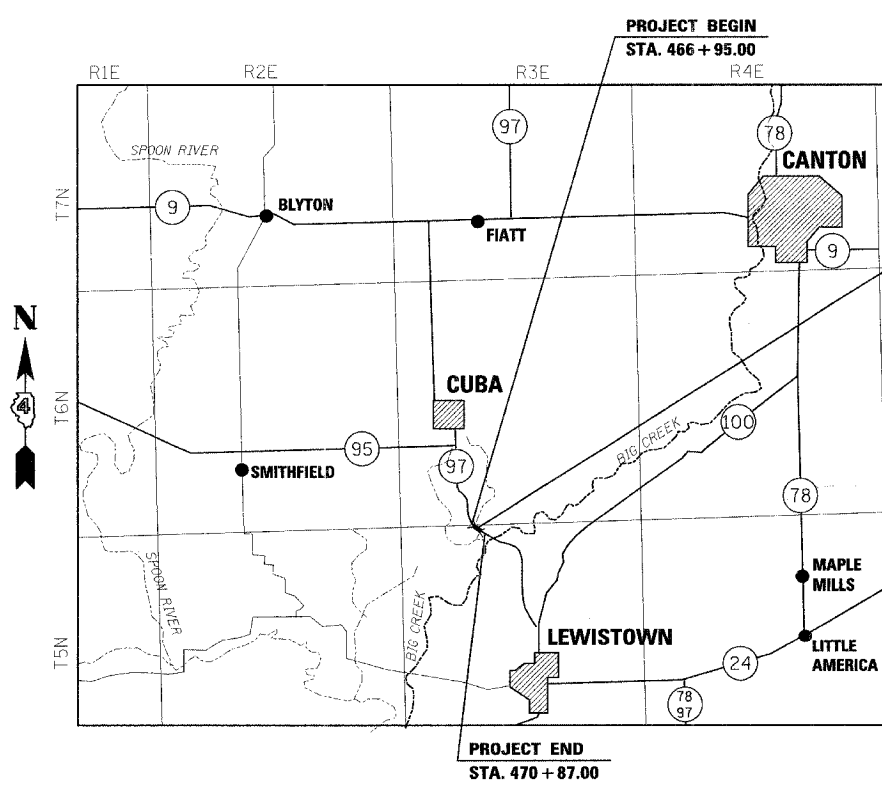


FULL SIZE PLANS HAVE BEEN PREPARED USING STANDARD ENGINEERING SCALES, REDUCED SIZED PLANS WILL NOT CONFORM TO STANDARD SCALES, IN MAKING MEASUREMENTS ON REDUCED PLANS, THE ABOVE SCALES MAY BE USED.

J.U.L.I.E.
 JOINT UTILITY LOCATION INFORMATION FOR EXCAVATION
 1-800-892-0123

CONTRACT NO. 68483

LENGTH OF PROJECT
 GROSS LENGTH: 392 FT=0.074 MILES
 NET LENGTH: 392 FT=0.074 MILES



BRIDGE OVER BIG CREEK
 STA. 468 + 35.85 TO STA. 468 + 67.98
 S.N. 029-0026
 2003 ADT = 1800
 2020 ADT = 2074

STATE OF ILLINOIS
 DEPARTMENT OF TRANSPORTATION
 DIVISION OF HIGHWAYS

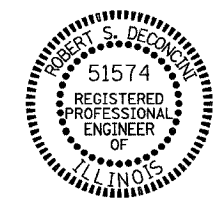
SUBMITTED Aug 25 20 06

DEPUTY DIRECTOR OF HIGHWAYS, REGION 5 ENGINEER
Robert S. DeConcini

PASSED October 13, 2006
Mike Hine
 ENGINEER OF DESIGN AND ENVIRONMENT

APPROVED October 13, 2006
Milton R. Sees, P.E.
 DIRECTOR, DIVISION OF HIGHWAYS

PRINTED BY THE AUTHORITY
 OF THE STATE OF ILLINOIS



Robert S. DeConcini 8/4/06
 ROBERT S. DECONCINI, P.E. DATE
 LICENSE NO. 062-51574 EXPIRES 11-30-2007

PREPARED BY:
 THOUVENOT, WADE & MOERCHEN, INC.

QA/QC BITUMINOUS SUPERPAVE PROJECT

PROJECT ENGINEER: JAMES MILLER
 SQUAD CONTACT: (309) 671-3451