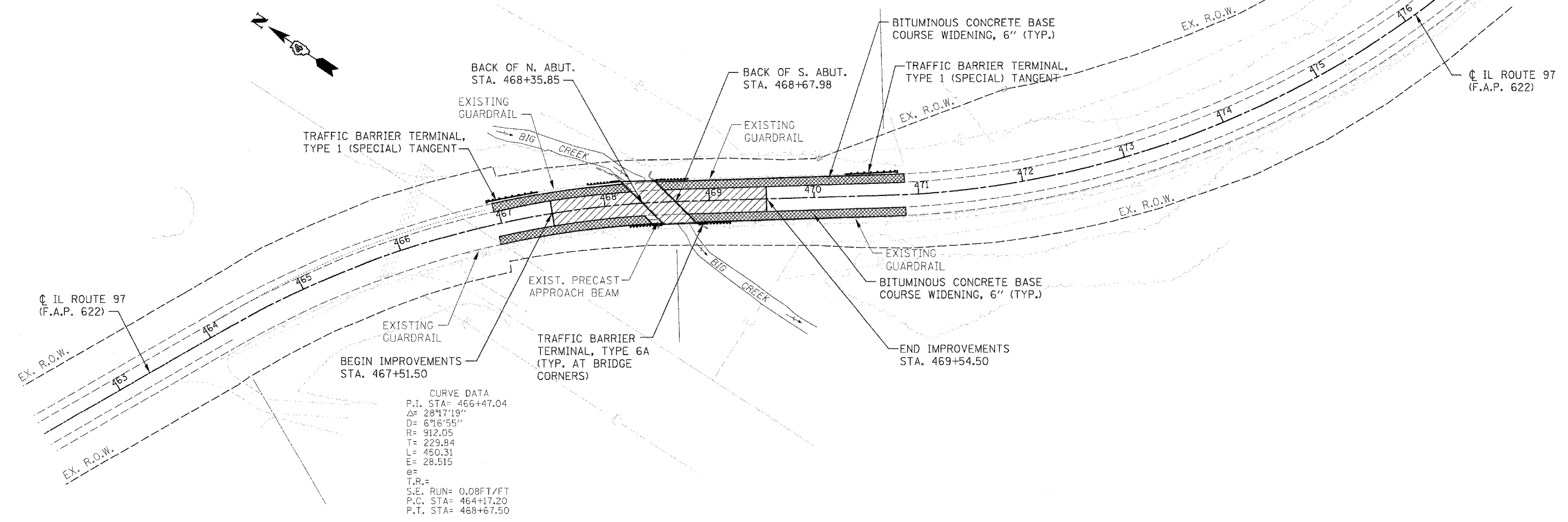


F.A.P. ROUTE	SECTION	COUNTY	TOTAL SHEETS	SHEET NO.
622	(128BR)I	FULTON	19	5

EXISTING CONDITIONS:  
CONTRACT NO. 68483

CURVE DATA  
P.I. STA= 473+85.33  
Δ= 38°50'15"  
D= 6°22'11"  
R= 899.43'  
T= 317.09'  
L= 609.72'  
E= 54.25'  
e=  
T.R.=  
S.E. RUN= 0.08FT/FT  
P.C. STA= 470+68.24  
P.T. STA= 476+77.96



CURVE DATA  
P.I. STA= 466+47.04  
Δ= 28°17'19"  
D= 6°16'55"  
R= 912.05'  
T= 229.84'  
L= 450.31'  
E= 28.515'  
e=  
T.R.=  
S.E. RUN= 0.08FT/FT  
P.C. STA= 464+17.20  
P.T. STA= 468+67.50

STATION TO STATION	BITUMINOUS MATERIALS PRIME COAT (GALLON)	AGGREGATE PRIME COAT (TON)	BITUMINOUS SURFACE REMOVAL BUTT JOINT (SQ. YD.)	BIT. CONC. SURFACE COURSE SUPERPAVE MIX D (TON)	BINDER COURSE SUPERPAVE N50 (TON)
467+51.50 TO 468+35.85	28.4	0.6	133	34.5	14.7
468+67.98 TO 469+54.50	28.8	0.6	133	34.9	15.2
<b>TOTAL:</b>	<b>57.2</b>	<b>1.2</b>	<b>266</b>	<b>69.4</b>	<b>29.9</b>

STATION TO STATION	WIDTH (FEET)	AREA (SQ. YD.)	EXCAVATION DEPTH (INCHES)	EARTH EXCAVATION WIDENING (CU. YD.)
466+95.00 LT. TO 468+25.87 LT.	8	116.3	6	19.4
468+49.68 LT. TO 470+87.00 LT.	8	211.0	6	35.2
466+95.00 RT. TO 468+44.25 RT.	8	132.7	6	22.1
468+79.26 RT. TO 470+87.00 RT.	8	184.7	6	30.8
<b>TOTAL:</b>				<b>107.4</b>

STATION TO STATION	WIDTH (FEET)	AREA (SQ. YD.)
466+95.00 LT. TO 468+25.87 LT.	8	116.3
468+49.68 LT. TO 470+87.00 LT.	8	211.0
466+95.00 RT. TO 468+44.25 RT.	8	132.7
468+79.26 RT. TO 470+87.00 RT.	8	184.7
<b>TOTAL:</b>		<b>645</b>

STATION TO STATION	TRAFFIC BARRIER TERMINAL, TYPE 1 (SPECIAL) TANGENT (EACH)	TRAFFIC BARRIER TERMINAL, TYPE 6A (EACH)	SPBGR REMOVAL (FOOT)	GUARDRAIL MARKERS T-A (EACH)	TERMINAL MARKER DIRECT APPLIED (EACH)
466+91.83 LT. TO 467+16.83 LT.			25		
467+85.58 LT. TO 468+16.83 LT.		1	31.25	1	
466+66.83 LT. TO 467+16.83 LT.	1				1
468+48.94 LT. TO 468+80.19 LT.		1	31.25	1	
470+61.44 LT. TO 470+86.44 LT.			25		
470+61.44 LT. TO 471+11.44 LT.	1				1
468+13.37 RT. TO 468+44.62 RT.		1	31.25	1	
468+88.10 RT. TO 469+19.35 RT.		1	31.25	1	
<b>TOTAL:</b>	<b>2</b>	<b>4</b>	<b>175</b>	<b>4</b>	<b>2</b>

STATION TO STATION	SHORT TERM PAVEMENT MARKINGS (FOOT)	TEMPORARY PAVEMENT MARKING LINE 4" (FT.)	WORK ZONE PAVEMENT MARKING REMOVAL (SQ. FT.)	EPOXY PAVEMENT MARKING LINE 4" (FOOT)		PAVEMENT MARKING REMOVAL (SQ. FT.)
				WHITE	YELLOW	
464+75.00 C. TO 472+77.00 C.	168		56			535
464+75.00 RT. TO 472+77.00 RT.				802		267
464+75.00 LT. TO 472+77.00 LT.				802		267
464+75.00 RT. TO 472+77.00 RT. (STAGE 1 & 2)		1604				535
464+75.00 LT. TO 472+77.00 LT. (STAGE 1 & 2)		1604				535
STOP BAR (2 LOCATIONS)						48
<b>SUB TOTAL:</b>				1604	1604	
<b>TOTAL:</b>	<b>168</b>	<b>3208</b>	<b>1174</b>	<b>3208</b>	<b>1604</b>	<b>1069</b>

NAME	DATE

ILLINOIS DEPARTMENT OF TRANSPORTATION  
**GENERAL SITE PLAN AND SCHEDULES**  
F.A.P. RTE. 622  
SECTION (128BR)I  
FULTON COUNTY

SCALE: NONE  
DATE: 03/24/2006

DRAWN BY: KBF  
CHECKED BY: BWP