

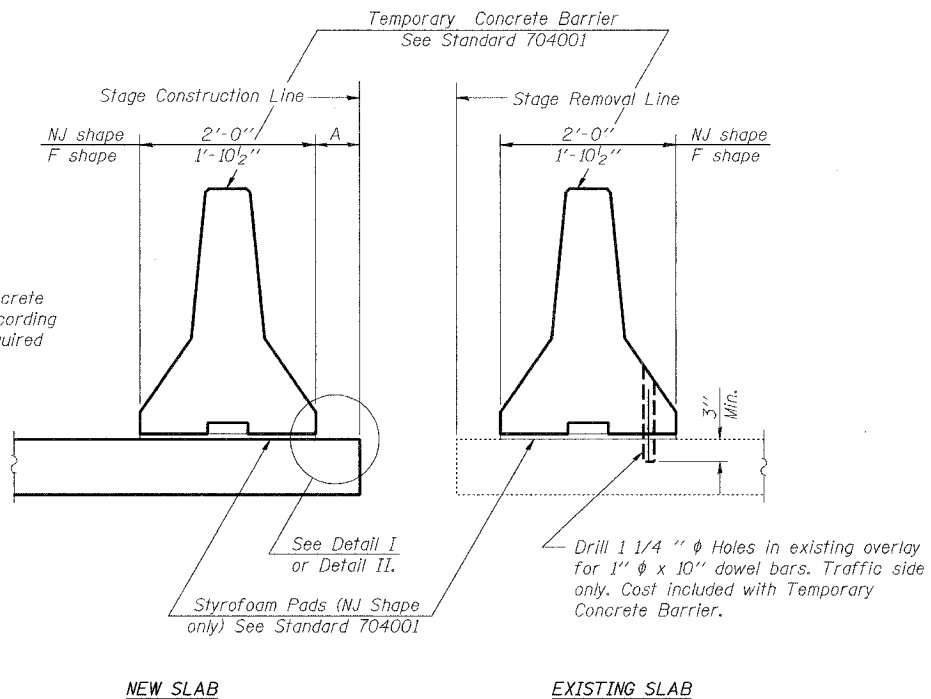
STATE OF ILLINOIS
DEPARTMENT OF TRANSPORTATION

ROUTE NO.	SECTION	COUNTY	SHEET	SHEET NO.
F.A.P. 622	(128BR)	FULTON	19 12	3
FED. AID DIST. NO. 7		ILLINOIS	FED. AID PROJECT	

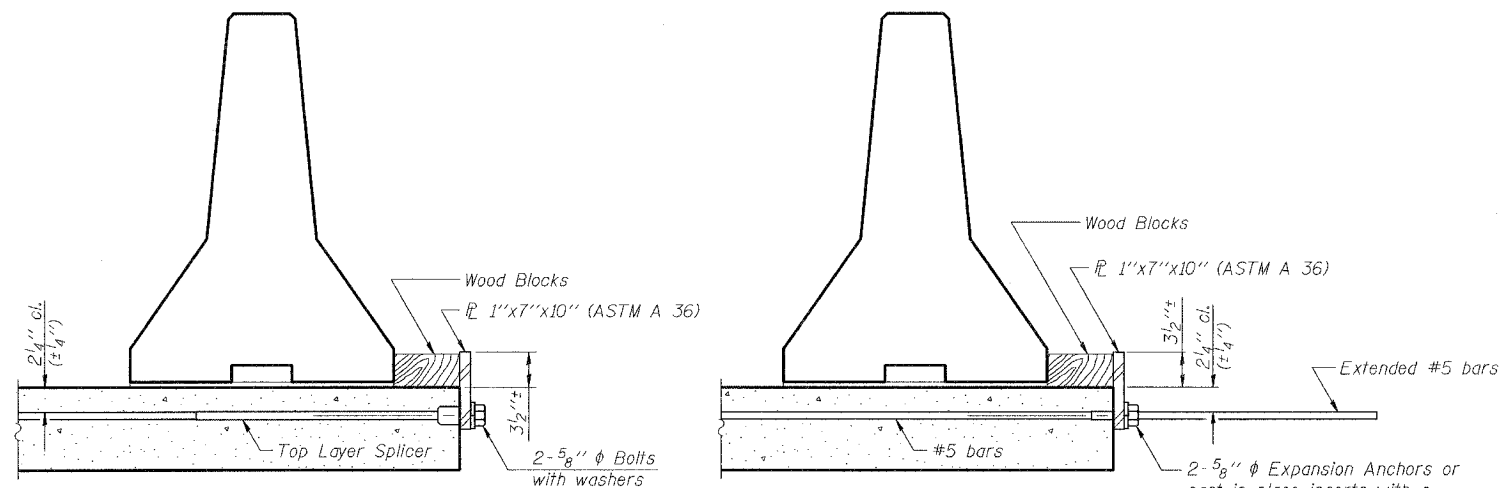
Contract #68483

10 SHEETS

When "A" is 3'-6" or less, the temporary concrete barrier shall be anchored to the new slab according to Detail I or Detail II. No anchorage is required when "A" is greater than 3'-6".



SECTIONS THRU SLAB

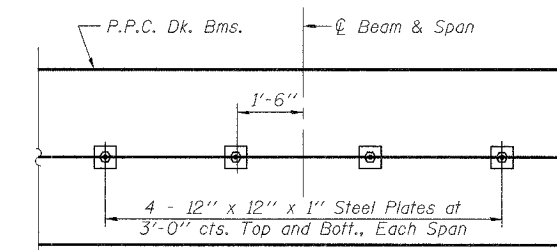


DETAIL I

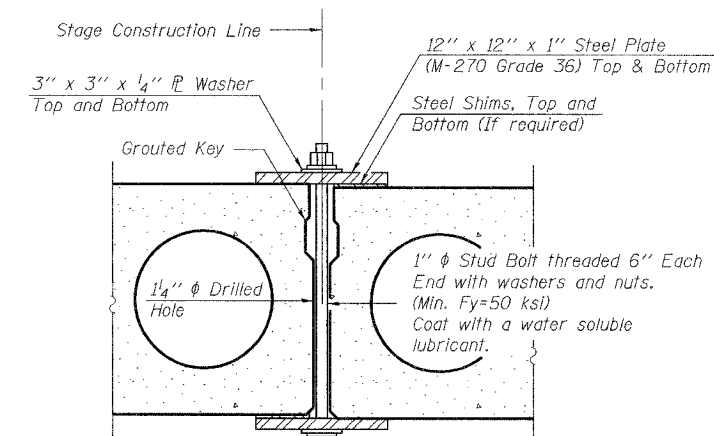
The 1" x 7" x 10" Plate shall not be removed until Stage II Construction forms and reinforcement bars are in place.

DETAIL II

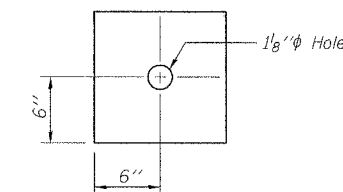
The 1" x 7" x 10" Plate shall not be removed until Stage II Construction forms and all reinforcement bars are in place and the concrete is ready to be placed.



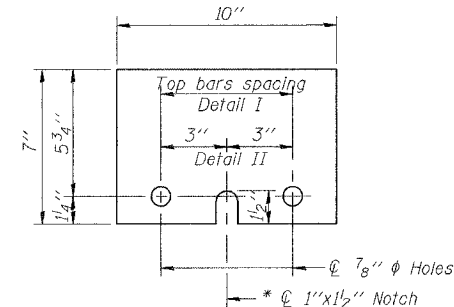
PLAN



SECTION



CLAMPING PLATE



1" x 7" x 10"

* Required only with Detail II

SHEAR KEY CLAMPING DETAILS AT STAGE CONST. JT.

See Special Provisions for Stage Construction of Precast Prestressed Concrete Deck Beams. Cost included with "Precast Prestressed Concrete Deck Beams" (17" Depth). See Stage Construction Details for traffic lanes.

TEMPORARY CONCRETE BARRIER
ILLINOIS ROUTE 97 OVER
BIG CREEK TRIBUTARY
F.A.P. RTE 622 SECTION (128BR)
FULTON COUNTY
SN 029-0026

DESIGNED BWP	THOUVENOT, WADE & MOERCHEN, INC. ENGINEERS • SURVEYORS • PLANNERS CORPORATE OFFICE 5940 OLD COLLINSVILLE RD. SPANISH LAKE, ILLINOIS 62226 TEL. (618) 624-4488 FAX (618) 624-6688 E-MAIL: CORP@TWP-INC.COM
CHECKED ALN	
DRAWN KBF	
CHECKED KPC	

R-27

10-22-04