

F.A.I. RTE.	SECTION	COUNTY	TOTAL SHEETS	SHEET NO.
74	.	VERMILION	122	50
STA.		TO STA.		
FED. ROAD DIST. NO. ILLINOIS FED. AID PROJECT				
•(10-92-8)(HB-1,HB-4)BR				
CONTRACT NO. 70001				

PR 2CC RADIUS POINTS

(A)	41+74.12, 13.00' LT
(B)	158+57.30, 37.39' LT
(C)	159+25.77, 00.00' LT

PR 2 - C.C.
80' - 300'
Ø = 11.00'

PR 65 ft RADIUS POINTS

(D)	43+83.31, 13.10' LT
(E)	159+35.83, 14.00' RT

PR 1 - C.C.
R = 65'

PR ISLAND RADIUS POINTS

(L)	43+09.80, 14.97' LT
(M)	43+14.87, 18.39' LT
(N)	43+16.28, 15.97' LT

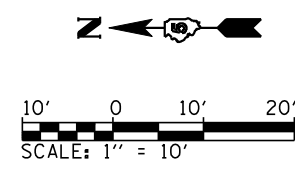
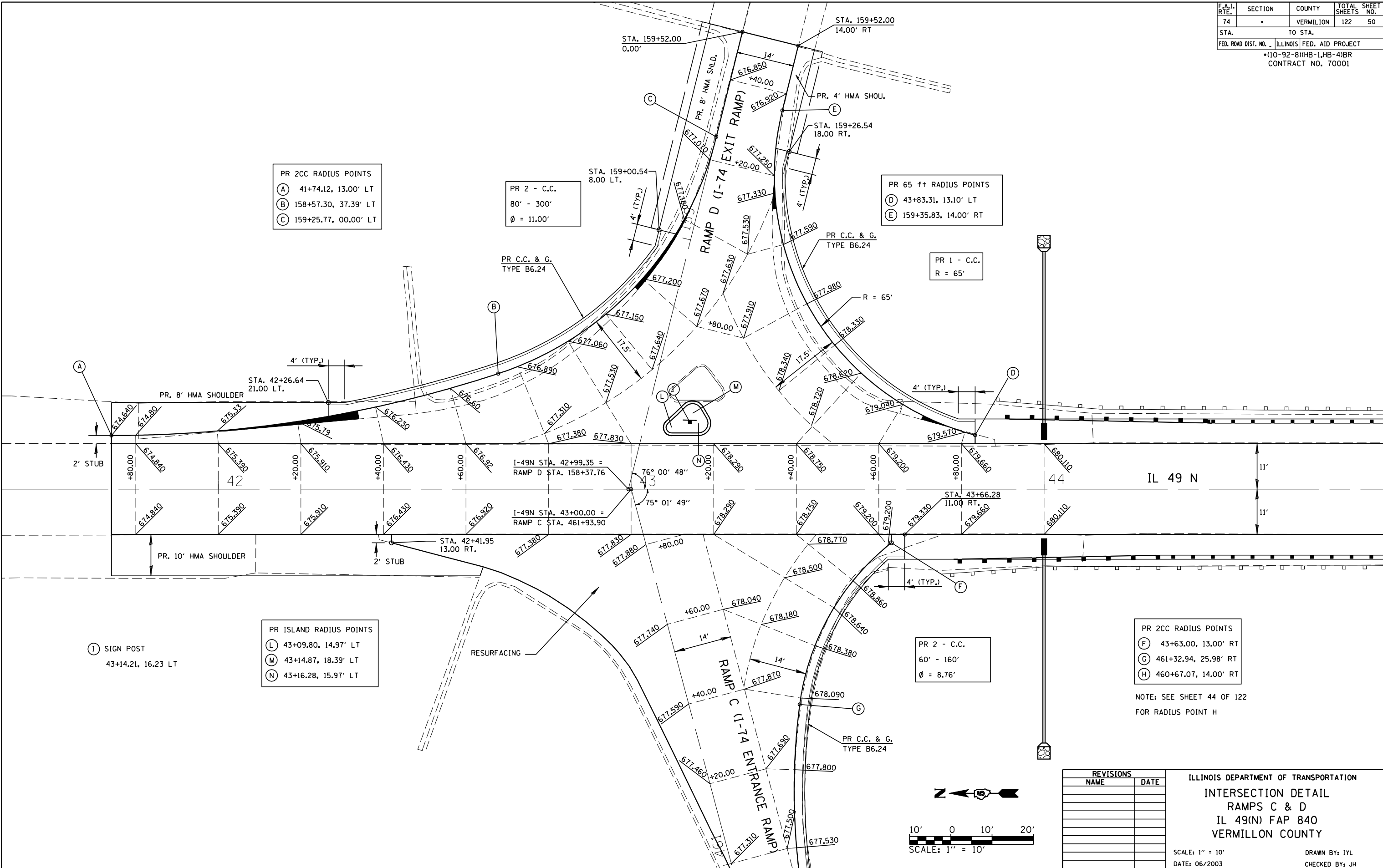
PR 2 - C.C.
60' - 160'
Ø = 8.76'

PR 2CC RADIUS POINTS

(F)	43+63.00, 13.00' RT
(G)	461+32.94, 25.98' RT
(H)	460+67.07, 14.00' RT

NOTE: SEE SHEET 44 OF 122
FOR RADIUS POINT H

(I) SIGN POST
43+14.21, 16.23 LT



REVISIONS	
NAME	DATE

ILLINOIS DEPARTMENT OF TRANSPORTATION
INTERSECTION DETAIL
RAMPS C & D
IL 49(N) FAP 840
VERMILION COUNTY
 SCALE: 1" = 10'
 DATE: 06/2003
 DRAWN BY: IYL
 CHECKED BY: JH