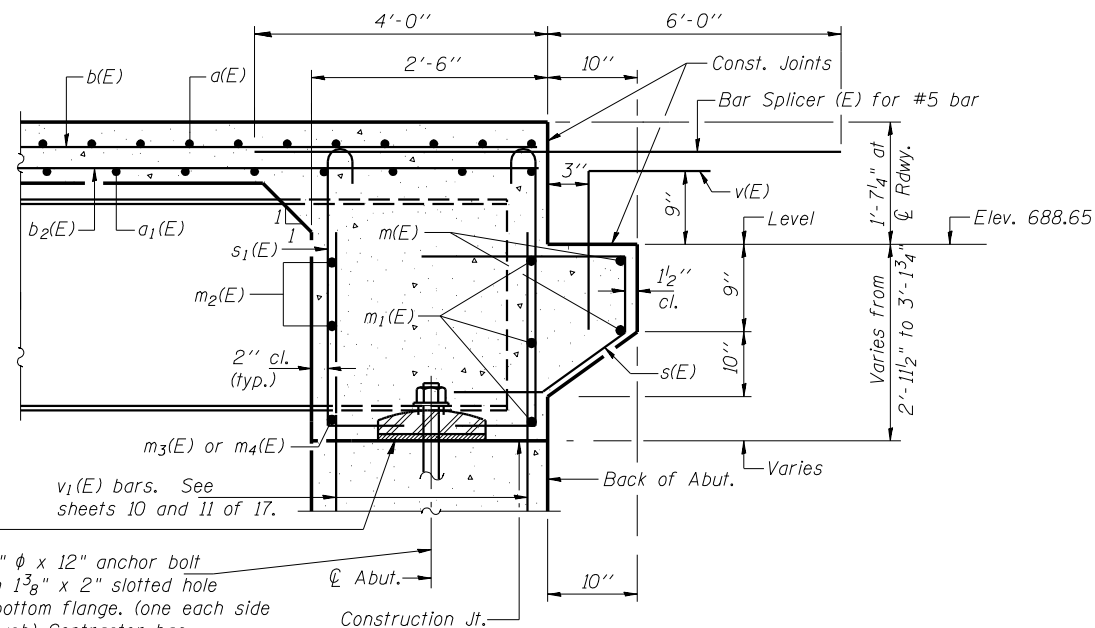


Notes: Reinforcement bars in diaphragm are billed with superstructure on sheet 6 of 17.
 Concrete in diaphragm is included with Concrete Superstructure on sheet 6 of 17.
 For details of bars s(E) & s1(E) see sheet 6 of 17.
 The s(E) and s1(E) bars shall be placed parallel to the beams. Spacing for these bars shall be at right angles to the beams.
 For anchor bolt details see sheet 14 of 17.
 For location of holes through web. See Sheet 8 of 17.
 See sheet 13 of 17 for Bar Splicer Details.

MIN. BAR LAP

#6 bar = 2'-9"



1/8" elastomeric neoprene leveling pad according to Article 1052.02 of the Standard Specifications. Cost included with Structural Steel.

1" ϕ x 12" anchor bolt with 1 3/8" x 2" slotted hole in bottom flange. (one each side of web) Contractor has option of cast in place or drilled installation.

SECTION A-A

Dimensions at right angles to abutment.
 * Cost included with Concrete Structures.

REVISIONS	
NAME	DATE

LIN ENGINEERING, LTD.
 210 W. Chestnut
 1071-853-669
 Channahon, Illinois 62629
 FAX 1071-853-4106
 Designed By: MTH
 Checked By: STD | Drawn By: JMD
 Date: 11/02
 File: 0920203.DGN

ILLINOIS DEPARTMENT OF TRANSPORTATION
 END DIAPHRAGM DETAILS
 FAP ROUTE 840 (IL 49N)
 OVER FAI RTE 74 (I-74)
 SECTION (10-92-8HB-4) BR
 VERMILION COUNTY
 STA. 1160+20.53 (I-74)
 STA. 50+00.00 (IL 49N)
 STRUCTURE NO. 092-0203