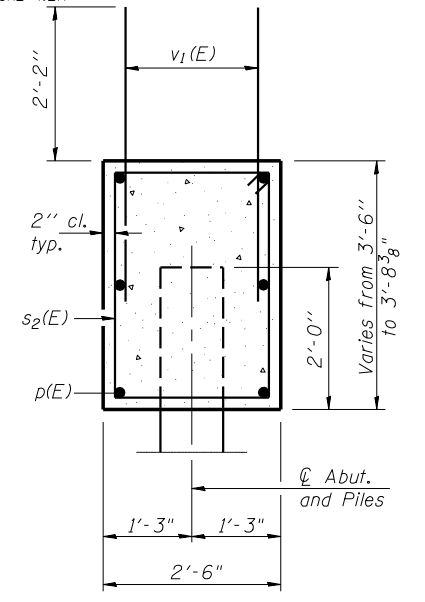
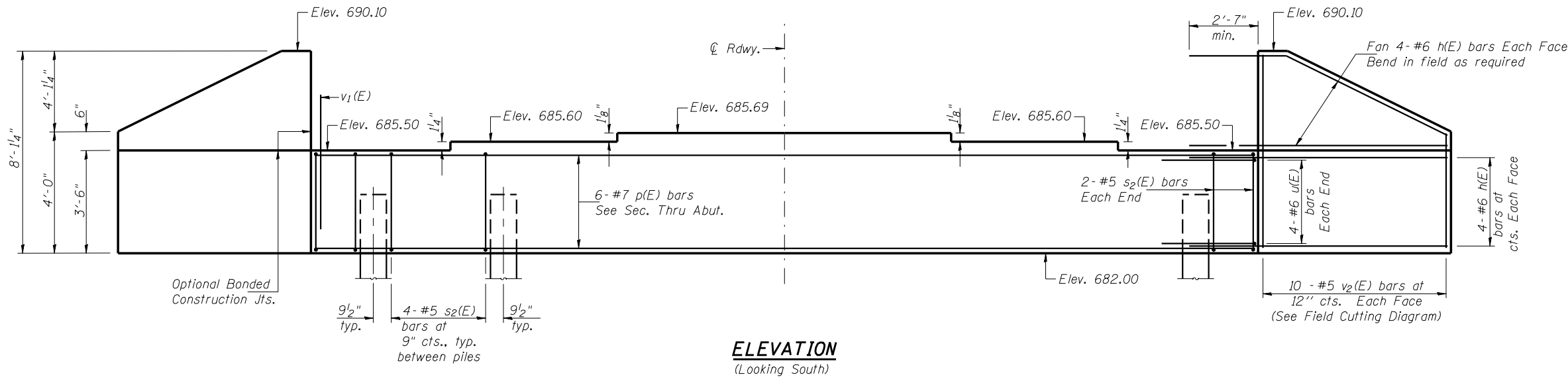


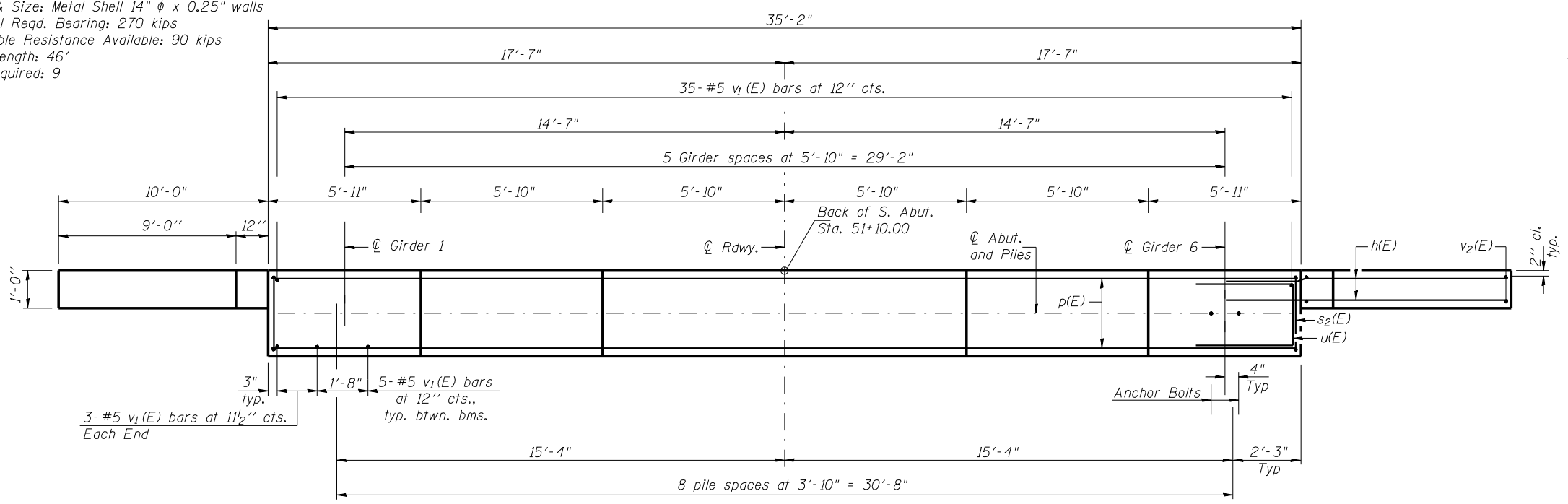
Notes: Pour steps monolithically with cap.
 Reinforcement bars designated (E) shall be epoxy coated.
 Space reinforcement in cap to miss anchor bolts.

ROUTE NO.	SECTION	COUNTY	TOTAL SHEETS	SHEET NO.	SHEET NO. 11
FAI 74	★	VERMILION	122	79	17 SHEETS
FED. ROAD DIST. NO. 7	ILLINOIS	FED. AID PROJECT-			



PILE DATA

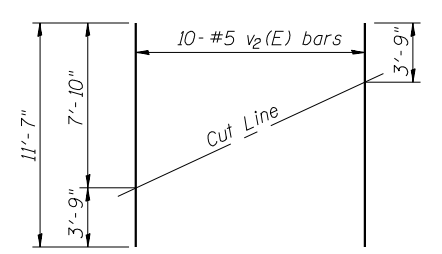
Type & Size: Metal Shell 14" φ x 0.25" walls
 Nominal Req'd. Bearing: 270 kips
 Allowable Resistance Available: 90 kips
 Est. Length: 46'
 No. Required: 9



BILL OF MATERIAL

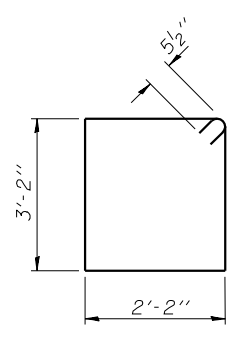
Bar	No.	Size	Length	Shape	
h(E)	32	#6	12'-6"	—	
p(E)	6	#7	34'-11"	—	
s2(E)	24	#5	11'-7"	□	
u(E)	8	#6	10'-1"	—	
v1(E)	62	#5	4'-4"	—	
v2(E)	20	#5	11'-7"	—	
Concrete Structures				Cu. Yd.	15.6
Reinforcement Bars, Epoxy Coated				Pound	1970
Structure Excavation				Cu. Yd.	29.5
Furnishing Metal Shell Piles 14" x 0.25"				Foot	414
Driving Piles				Foot	414

PLAN

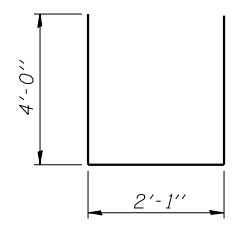


FIELD CUTTING DIAGRAM

Order v2(E) full length. Cut as shown and use remainder of bars in opposite face.



BAR s2(E)



BAR u(E)

LIN ENGINEERING, LTD.
 210 W. Chestnut
 2071-833-669
 Chatham, Illinois 62629
 FAX: (217) 683-4106
 Designed By: MTH
 Checked By: STD | Drawn By: JMD
 Date: 11/02
 File: 0920203.DGN

REVISIONS	
NAME	DATE

ILLINOIS DEPARTMENT OF TRANSPORTATION
SOUTH ABUTMENT
 FAP ROUTE 840 (IL 49N)
 OVER FAI RTE 74 (I-74)
 SECTION (10-92-8HB-4) BR
 VERMILION COUNTY
 STA. 1160+20.53 (I-74)
 STA. 50+00.00 (IL 49N)
 STRUCTURE NO. 092-0203