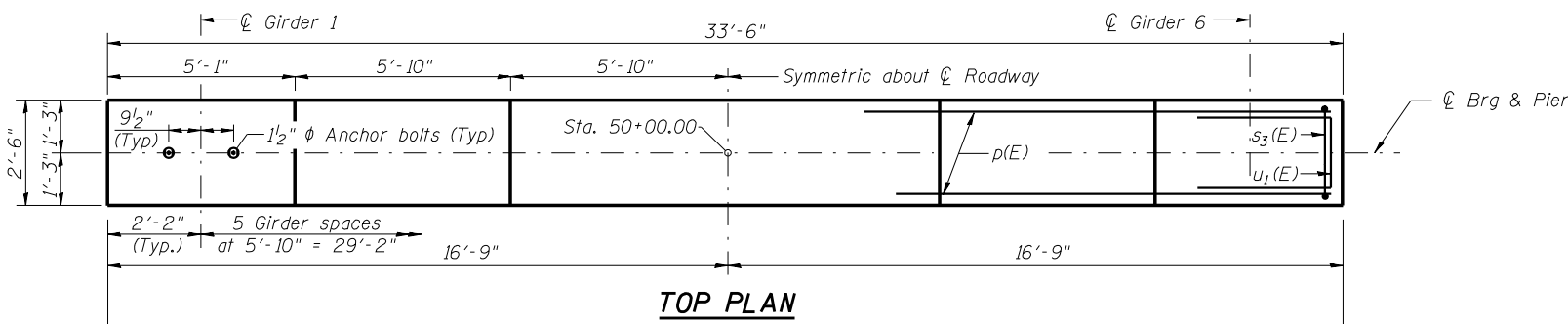


Notes:

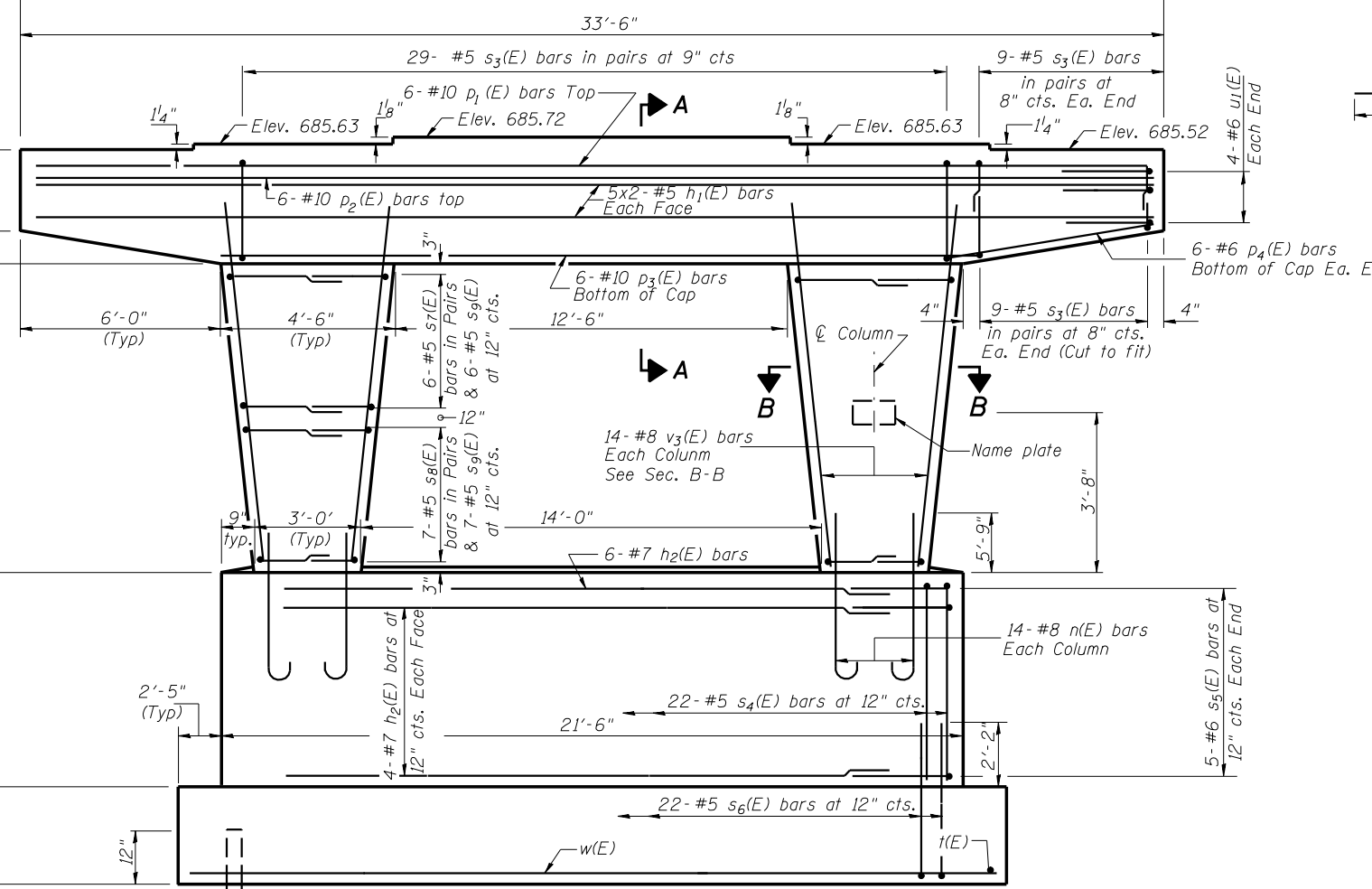
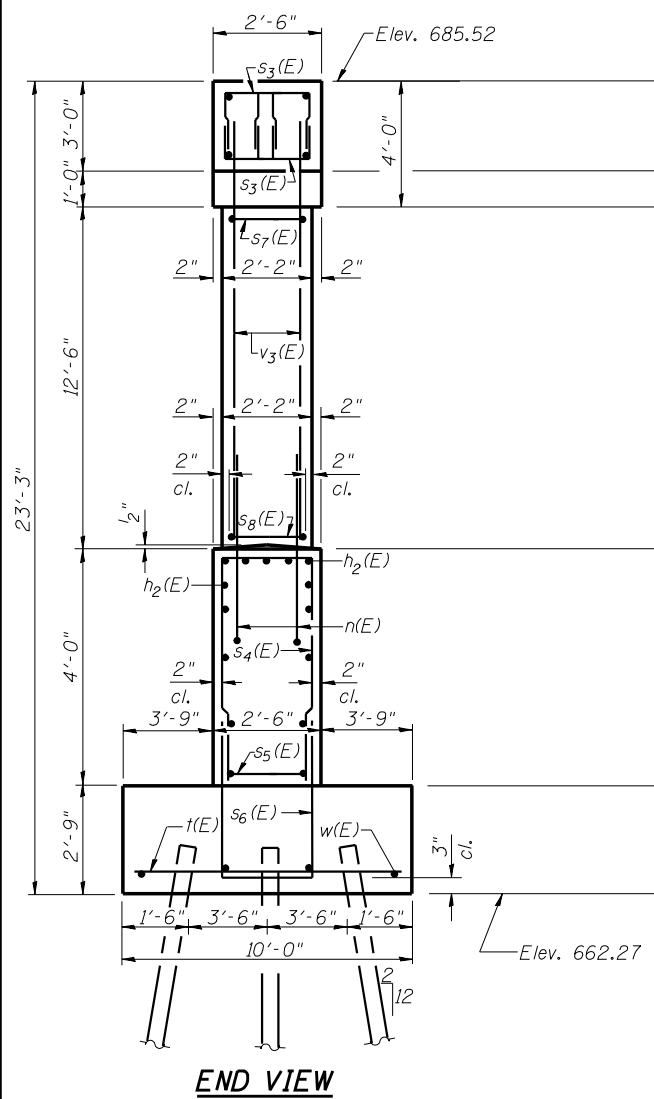
1. Space reinforcement in cap to miss anchor bolts.
2. Pour steps monolithically with cap.
3. The existing Piles shall be cut off 1'-0" below the bottom of the new footing.

ROUTE NO.	SECTION	COUNTY	SHEET NO.	SHEET	SHEET NO.
FAI 74	*	VERMILION	122	80	17 SHEETS
FED. ROAD DIST. NO. 7	ILLINOIS	FED. AID PROJECT			

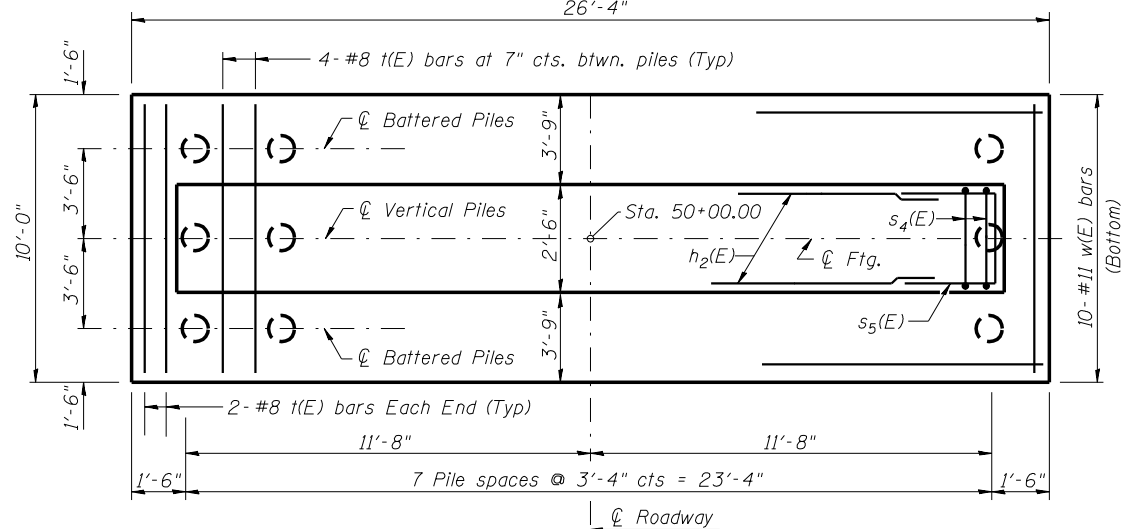
★ (10-92-8HB-4)BR



MIN BAR LAP
#5 = 2'-2"

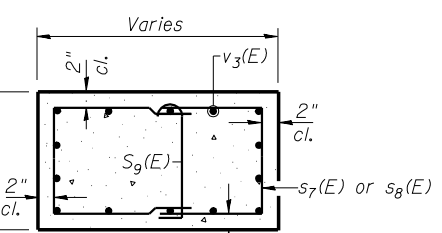
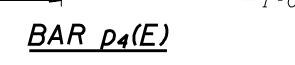


ELEVATION
(Looking South)

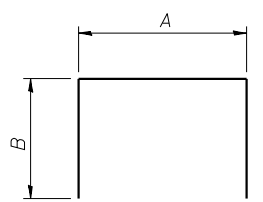


FOOTING PLAN

PILE DATA
Type & Size - Metal shell - 14"φ x 0.25" walls
Nominal Required Bearing: 300 kips
Allowable Resistance Available: 100 kips
Est. Length - 33'
No. Req'd. - 24



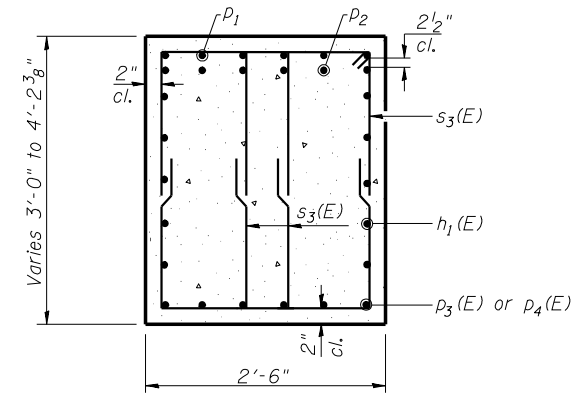
SECTION B-B



BARS p1 & s3 THRU s8

A & B DIMENSIONS

Bar	A	B
p1(E)	33'-0"	2'-6"
s3(E)	1'-6"	2'-11"
s4(E)	2'-2"	3'-9"
s5(E)	2'-1"	2'-6"
s6(E)	2'-2"	4'-8"
s7(E)	1'-10"	3'-2"
s8(E)	1'-10"	2'-9"

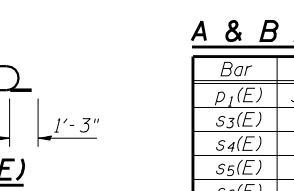


SECTION A-A

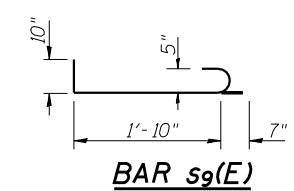
BILL OF MATERIAL

Bar	No.	Size	Length	Shape
h1(E)	20	#5	17'-8"	—
h2(E)	14	#7	21'-2"	—
n(E)	28	#8	10'-3"	—
p1(E)	6	#10	38'-0"	—
p2(E)	6	#10	33'-0"	—
p3(E)	6	#10	21'-0"	—
p4(E)	12	#6	9'-7"	—
s3(E)	188	#5	7'-4"	—
s4(E)	22	#5	9'-8"	—
s5(E)	10	#6	7'-1"	—
s6(E)	22	#5	11'-6"	—
s7(E)	24	#5	8'-2"	—
s8(E)	28	#5	7'-4"	—
s9(E)	26	#5	3'-3"	—
t(E)	32	#8	9'-9"	—
u1(E)	8	#6	6'-1"	—
v3(E)	28	#8	14'-6"	—
w(E)	10	#11	26'-0"	—
Structure Excavation			Cu. Yd.	62.8
Concrete Structures			Cu. Yd.	53.5
Reinforcement Bars, Epoxy Coated			Pound	10200
Furnishing Metal Shell Piles 14" x 0.25"			Foot	792
Driving Piles			Foot	792

Reinforcement Bars designated (E) shall be epoxy coated.



BAR n(E)



BAR s9(E)

LIN ENGINEERING, LTD.
210 W. Chestnut
Chattanooga, Illinois 62629
971-983-4669 FAX 971-983-4106
Designed By: MTH Checked By: STD Drawn By: JMD
Date: 11/02 File: 0920203.DGN

REVISIONS	
NAME	DATE

ILLINOIS DEPARTMENT OF TRANSPORTATION
PIER DETAILS
FAP ROUTE 840 (IL 49N)
OVER FAI RTE 74 (I-74)
SECTION (10-92-8HB-4) BR
VERMILION COUNTY
STA. 1160+20.53 (I-74)
STA. 50+00.00 (IL 49N)
STRUCTURE NO. 092-0203