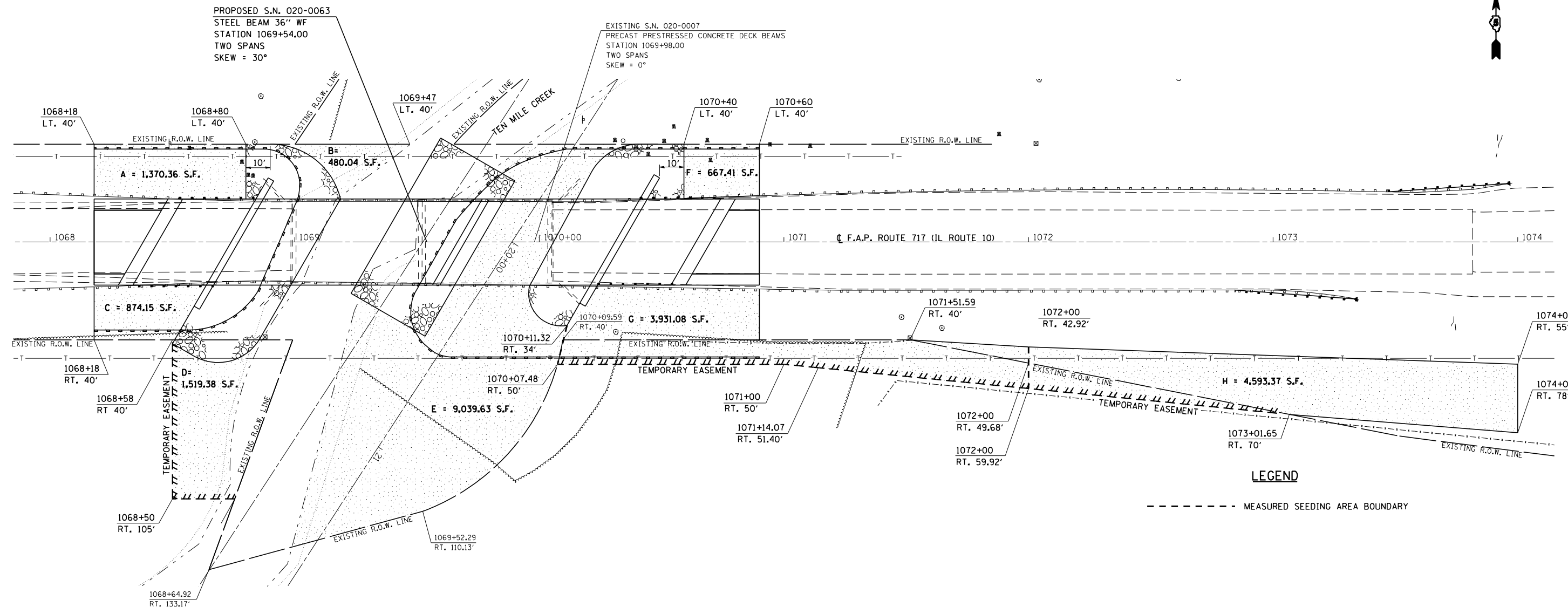
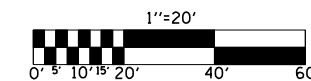


F.A.P. RTE.	SECTION	COUNTY	TOTAL SHEETS	SHEET NO.
717	(111B)BR	DEWITT	53	20
STA. 1068+00.00		TO STA. 1074+00.00		
FED. ROAD DIST. NO.	ILLINOIS	FED. AID PROJECT		

SEEDING PLAN



LEGEND

----- MEASURED SEEDING AREA BOUNDARY

SEEDING

LOCATION	SEEDING CLASS 3 (ACRE)	NITROGEN FERTILIZER NUTRIENT (POUND)	PHOSPHORUS FERTILIZER NUTRIENT (POUND)	POTASSIUM FERTILIZER NUTRIENT (POUND)	MULCH METHOD 2 (ACRE)	TEMPORARY EROSION CONTROL SEEDING (POUND)
WEST END	0.09	9.00	9.00	9.00	0.09	9.00
EAST END	0.43	40.00	40.00	40.00	0.43	43.00
		REFER TO SEEDING PLAN FOR AREA LOCATIONS				
TOTALS	0.52	49	49	49	0.52	52
*USE	0.60	50.00	50.00	50.00	0.60	60.00
*ROUNDED FOR ESTIMATE OF COST						

ILLINOIS DEPARTMENT OF TRANSPORTATION

SEEDING PLAN

F.A.P. ROUTE 717 (IL ROUTE 10)
SECTION (111B)BR
DEWITT COUNTY

SCALE: 1" = 20'
DATE: 07/25/06

DRAWN BY: B.B.P.
CHECKED BY: R.M.J.