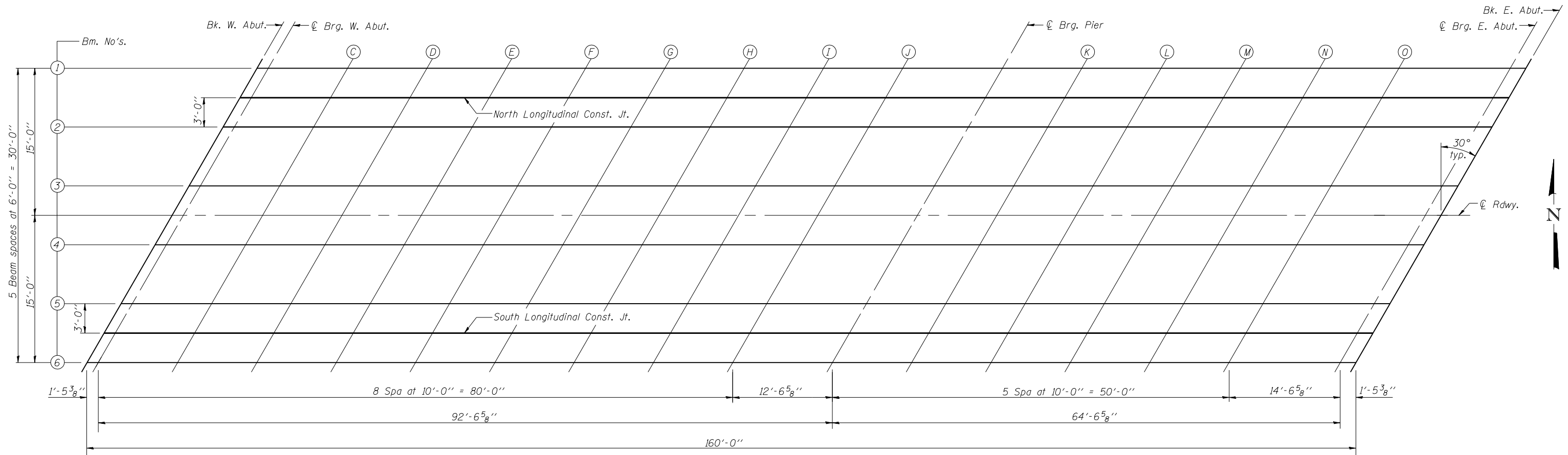
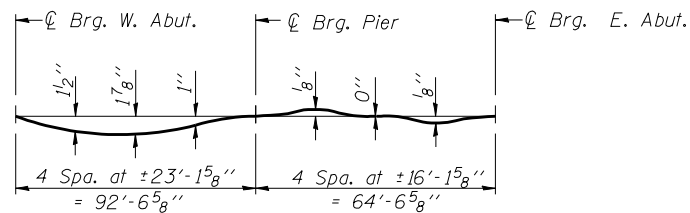


STATE OF ILLINOIS
DEPARTMENT OF TRANSPORTATION

ROUTE NO.	SECTION	COUNTY	TOTAL SHEETS	SHEET NO.	SHEET NO. 3
F.A.P. 717	(111B)BR	DEWITT	53	23	16 SHEETS
FED. ROAD DIST. NO. 7	ILLINOIS	FED. AID PROJECT	Contract #70387		

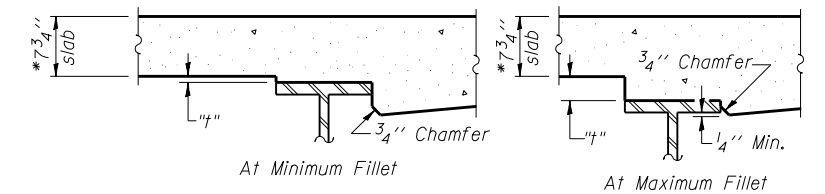


PLAN



BEAM 1

Location	Station	Offset	Theoretical Grade Elevations	Theoretical Grade Elevations Adjusted For Dead Load Deflection & Grinding
Bk W Abut	106882.66	-15.00	694.25	694.27
☐ Brg. W Abut	106884.10	-15.00	694.25	694.27
A	106894.10	-15.00	694.26	694.33
B	106904.10	-15.00	694.27	694.40
C	106914.10	-15.00	694.28	694.43
D	106924.10	-15.00	694.29	694.46
E	106934.10	-15.00	694.30	694.47
F	106944.10	-15.00	694.31	694.45
G	106954.10	-15.00	694.33	694.43
H	106964.10	-15.00	694.34	694.40
☐ Brg. Pier	106976.66	-15.00	694.35	694.37
I	106986.66	-15.00	694.36	694.38
J	106996.66	-15.00	694.37	694.39
K	107006.66	-15.00	694.38	694.40
L	107016.66	-15.00	694.39	694.42
M	107026.66	-15.00	694.40	694.43
☐ Brg. E Abut	107041.22	-15.00	694.42	694.44
Bk E Abut	107042.66	-15.00	694.42	694.44



To determine "t": After all structural steel has been erected, elevations of the top flanges of the beams shall be taken at intervals shown above. These elevations subtracted from the "Theoretical Grade Elevations Adjusted for Dead Load Deflection & Grinding" shown on this sheet and sheet 4 of 16, minus 7 3/4" deck thickness, equals the fillet heights "t" above top flanges of beams.
The slab is to be ground after curing to achieve smoothness, but the slab is not to be ground to elevations below the "Theoretical Grade Elevations" shown on this sheet and sheet 4 of 16. For grinding the deck, see Special Provisions.

FILLET HEIGHTS

DESIGNED Stephen M. Ryan
CHECKED Angela J. Bryant
DRAWN R. Sommer
CHECKED S.M.R./F.T.

September 29, 2006
EXAMINED Thomas J. Domagalaki
PASSED Ralph E. Anderson

*Prior to grinding.

TOP OF SLAB ELEVATIONS
F.A.P. RT. 717 SEC. (111B)BR
DEWITT COUNTY
STATION 1069+54.00
STRUCTURE NO. 020-0063