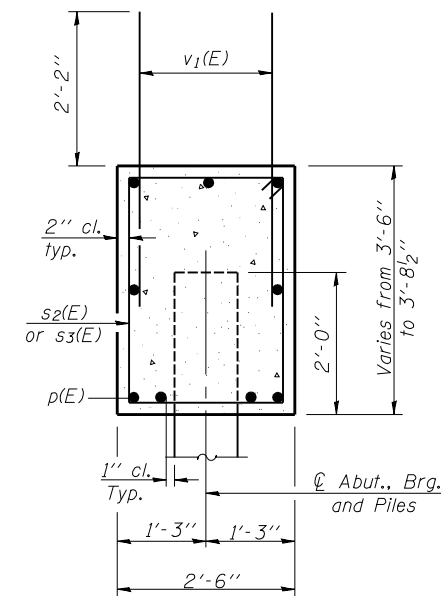
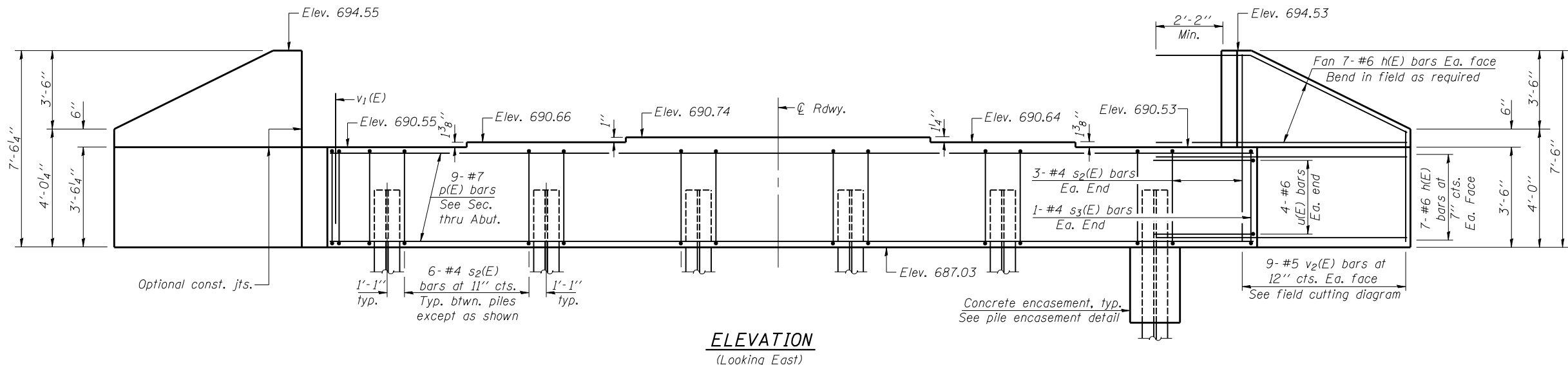


Notes: . Pour steps monolithically with cap.  
 . Reinforcement bars designated (E) shall be epoxy coated.  
 Space reinforcement bars in cap to miss anchor bolts.  
 For anchor bolt installation, See sheet 11 of 16.

STATE OF ILLINOIS  
 DEPARTMENT OF TRANSPORTATION

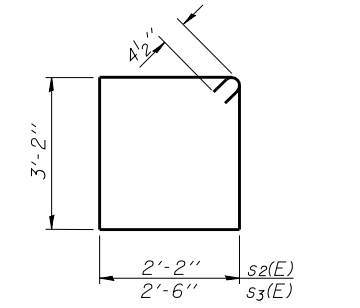
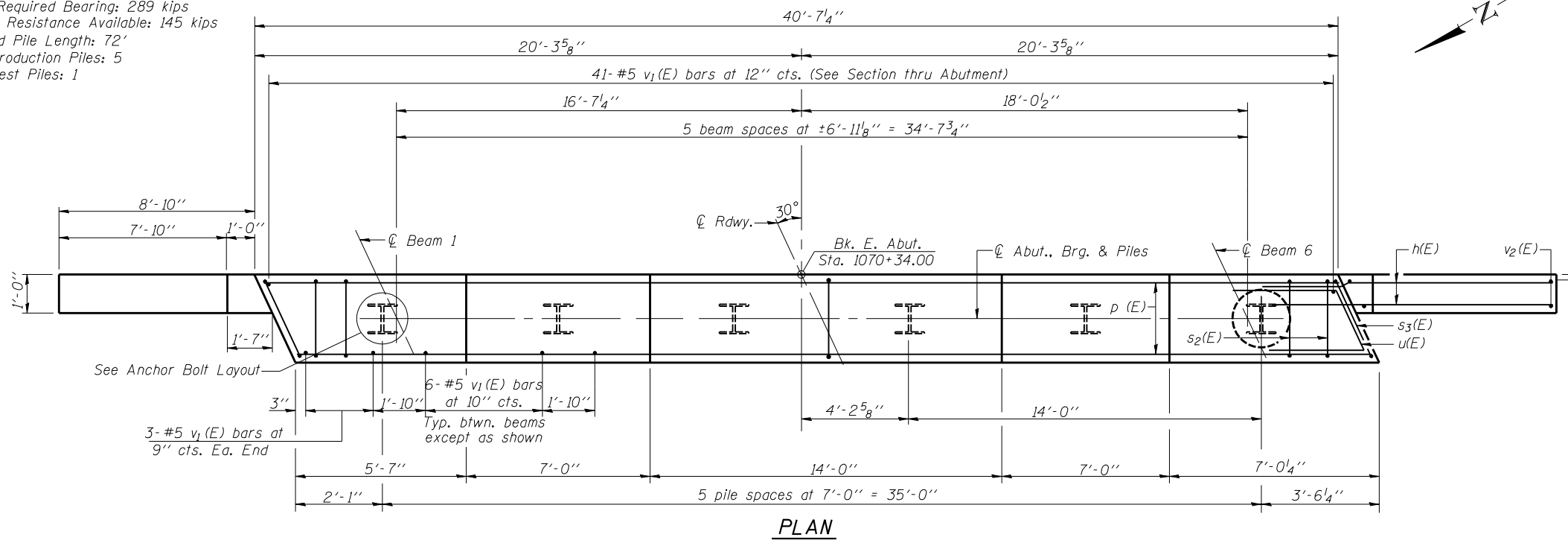
ROUTE NO.	SECTION	COUNTY	TOTAL SHEETS	SHEET NO.	SHEET NO. 13
F.A.P. 717	(111B)BR	DEWITT	53	33	16 SHEETS
FED. ROAD DIST. NO. 7	ILLINOIS	FED. AID PROJECT			

Contract #70387



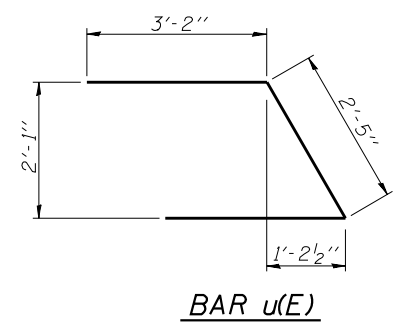
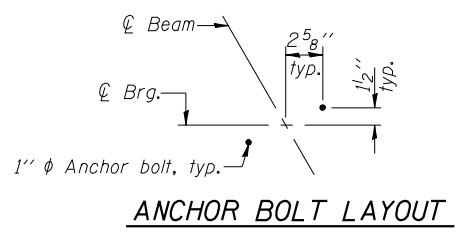
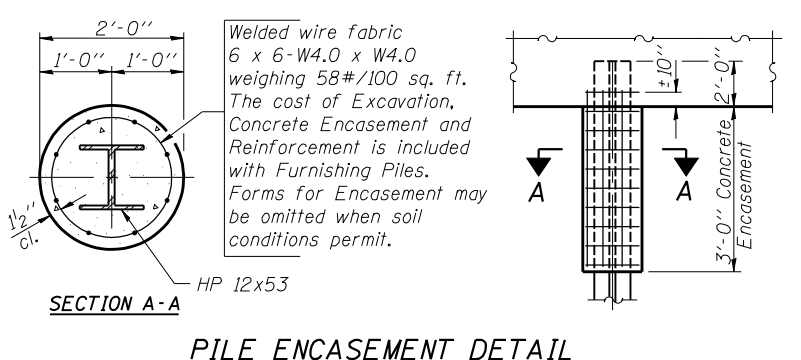
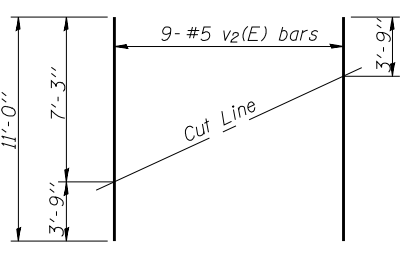
**PILE DATA**

Pile type: Steel HP12x53  
 Nominal Required Bearing: 289 kips  
 Factored Resistance Available: 145 kips  
 Estimated Pile Length: 72'  
 No. of Production Piles: 5  
 No. of Test Piles: 1



**BILL OF MATERIAL**

Bar	No.	Size	Length	Shape
h(E)	56	#6	11'-8"	—
p(E)	9	#7	40'-4"	—
s <sub>2</sub> (E)	36	#4	11'-5"	□
s <sub>3</sub> (E)	2	#4	12'-1"	□
u(E)	8	#6	8'-9"	⌋
v <sub>1</sub> (E)	77	#5	4'-4"	—
v <sub>2</sub> (E)	18	#5	11'-0"	—
Concrete Structures	Cu. Yd.		17.4	
Reinforcement Bars, Epoxy Coated	Pound		2670	
Structure Excavation	Cu. Yd.		176.4	
Driving Piles	Foot		360	
Test Pile Steel HP12x53	Each		1	
Furnishing Steel Piles HP12x53	Foot		360	



DESIGNED Stephen M. Ryan  
 CHECKED Angela J. Bryant  
 DRAWN R. Sommer  
 CHECKED S.M.R./F.T.

September 29, 2006  
 EXAMINED Thomas J. Domagala  
 ENGINEER OF BRIDGE DESIGN  
 PASSED Ralph E. Anderson  
 ENGINEER OF BRIDGES AND STRUCTURES

**EAST ABUTMENT**  
 F.A.P. RT. 717 SEC. (111B)BR  
 DEWITT COUNTY  
 STATION 1069+54.00  
 STRUCTURE NO. 020-0063