

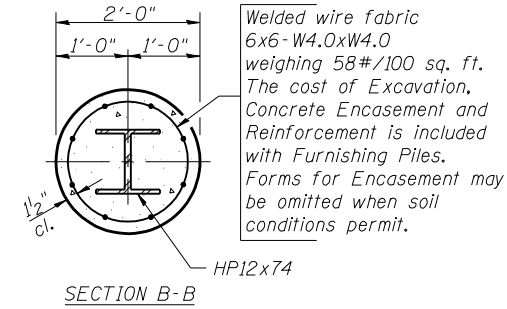
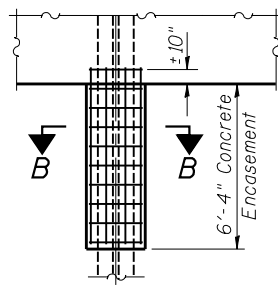
STATE OF ILLINOIS
DEPARTMENT OF TRANSPORTATION

ROUTE NO.	SECTION	COUNTY	TOTAL SHEETS	SHEET NO.	SHEET NO. 14
F.A.P. 717	(111B)BR	DEWITT	53	34	16 SHEETS
FED. ROAD DIST. NO. 7	ILLINOIS	FED. AID PROJECT-			

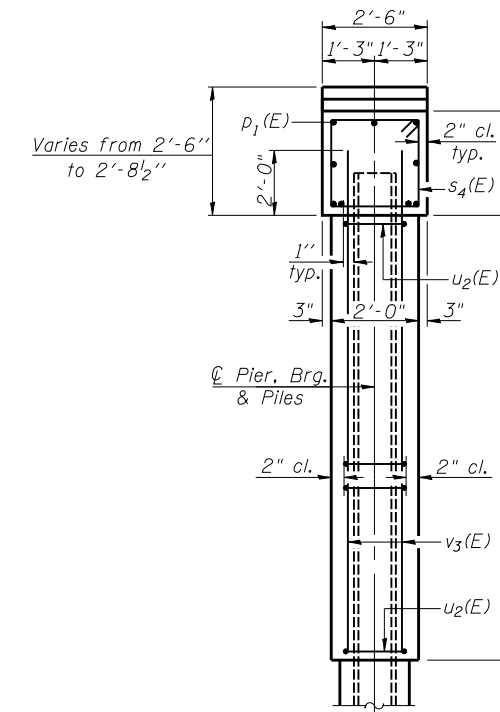
Contract #70387

PILE DATA

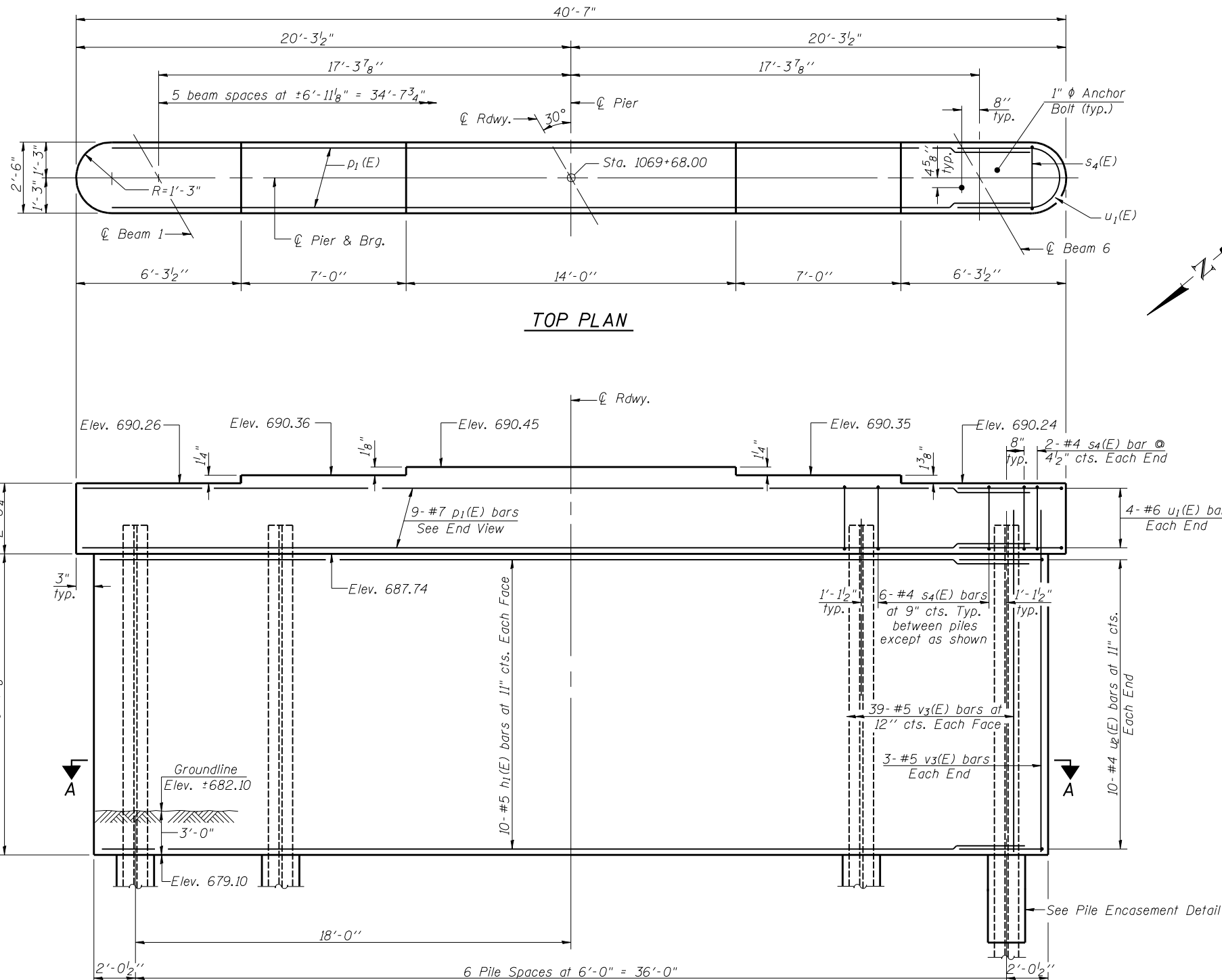
Pile Type: Steel HP12x74
Nominal Req'd. Bearing: 552 kips
Factored Resistance Available: 276 kips
Estimated Pile Length: 92'
No. of Production Piles: 6
No. of Test Piles: 1



PILE ENCASEMENT DETAILS

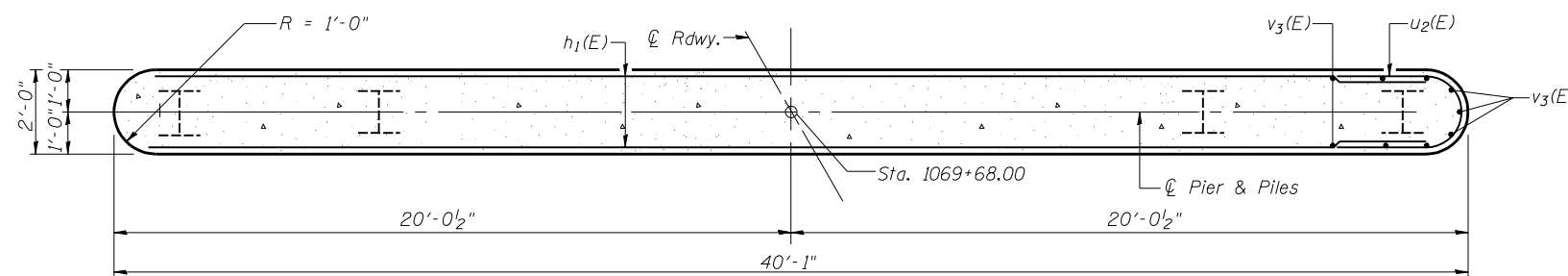


END VIEW

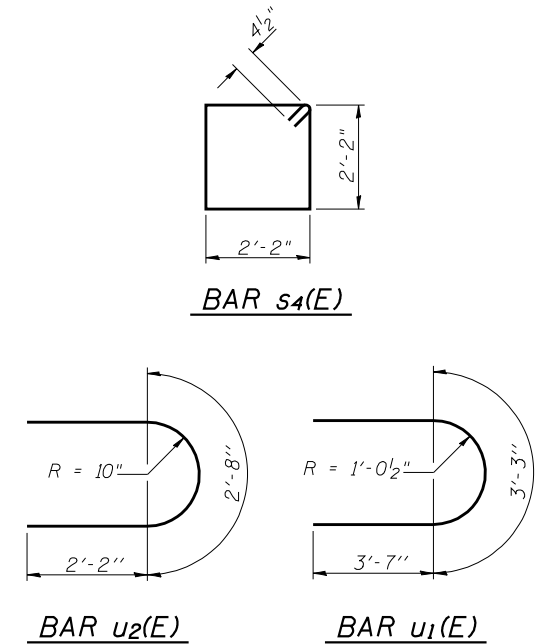


ELEVATION

(Looking East)



SECTION A-A



BILL OF MATERIAL

Bar	No.	Size	Length	Shape
h1(E)	20	#5	38'-1"	—
p1(E)	9	#7	38'-1"	—
s4(E)	40	#4	9'-5"	□
u1(E)	8	#6	10'-5"	U
u2(E)	20	#4	7'-0"	U
v3(E)	84	#5	10'-6"	—
Concrete Structures		Cu. Yd.	35.7	
Reinforcement Bars, Epoxy Coated		Pound	2890	
Furnishing Steel Piles HP12x74		Foot	552	
Structure Excavation		Cu. Yd.	32.2	
Test Pile Steel HP 12x74		Each	1	
Driving Piles		Foot	552	
Underwater Structure Excavation Protection - Location 1		Each	1	

Notes:
Pour steps monolithically with cap.
Reinforcement bars designated (E) shall be epoxy coated.
For anchor bolt installation details see sheet 11 of 16.
Space reinforcement in pier cap to miss anchor bolts.

DESIGNED Stephen M. Ryan
CHECKED Angela J. Bryant
DRAWN R. Sommer
CHECKED S.M.R./F.T.

September 29, 2006
EXAMINED Thomas J. Domagalaki
PASSED Ralph E. Anderson

PIER
F.A.P. RT. 717 SEC. (111B)BR
DEWITT COUNTY
STATION 1069+54.00
STRUCTURE NO. 020-0063