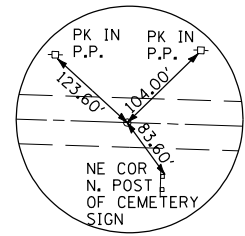
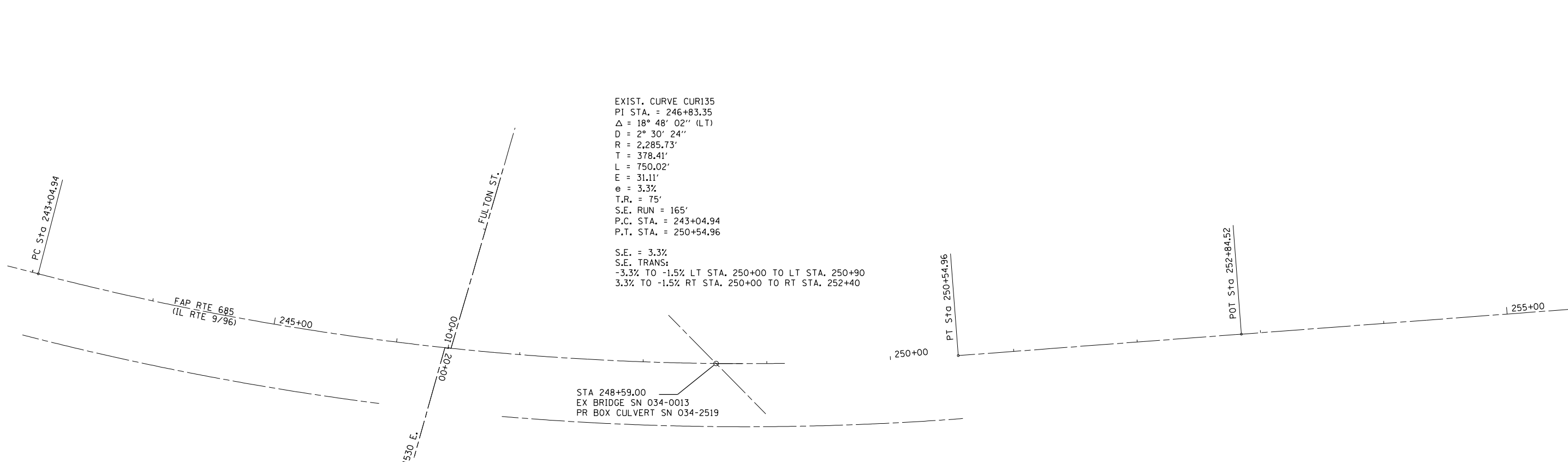


F.A.P. RTE.	SECTION	COUNTY	TOTAL SHEETS	SHEET NO.
685	113B-2	HANCOCK	45	15
STA. 246+00		TO STA. 252+00		
FED. ROAD DIST. NO.	ILLINOIS	FED. AID PROJECT		

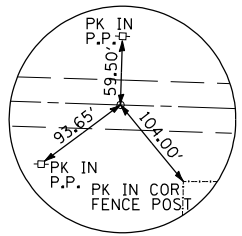
EXIST. CURVE CUR135
 PI STA. = 246+83.35
 $\Delta = 18^\circ 48' 02''$ (LT)
 $D = 2^\circ 30' 24''$
 $R = 2,285.73'$
 $T = 378.41'$
 $L = 750.02'$
 $E = 31.11'$
 $e = 3.3\%$
 $T.R. = 75'$
 $S.E. RUN = 165'$
 $P.C. STA. = 243+04.94$
 $P.T. STA. = 250+54.96$

S.E. = 3.3%
 S.E. TRANS:
 -3.3% TO -1.5% LT STA. 250+00 TO LT STA. 250+90
 3.3% TO -1.5% RT STA. 250+00 TO RT STA. 252+40

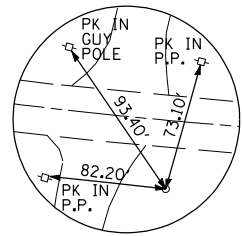
STA 248+59.00
 EX BRIDGE SN 034-0013
 PR BOX CULVERT SN 034-2519



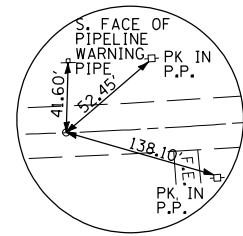
POT STA 240+11.35
 (PK NAIL IN C)



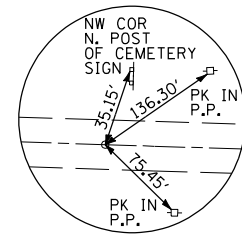
PC STA 243+04.94
 (PK NAIL IN C)



PI STA 246+83.35
 (I. PIN)



PT STA 250+54.90
 (PK NAIL IN C)



POT STA 254+00.00
 (PK NAIL IN C)

REVISIONS	
NAME	DATE

ILLINOIS DEPARTMENT OF TRANSPORTATION

ALIGNMENT AND TIES
IL 9/96 OVER OPPOSUM CREEK
FAP 685 SECTION 113B-2
HANCOCK COUNTY

SCALE VERT. 1"=40'
 DATE #DATE

DRAWN BY RLH
 CHECKED BY MJS

TUG PROJ: 6103007-11
 PLOT DATE: 4/9/27-2007 11:48:17 AM
 FILE NAME: #FILE#

The Upchurch Group
 HILLSIDE, IL. (708) 449-2321
 MATTOON, IL. (217) 285-3177