

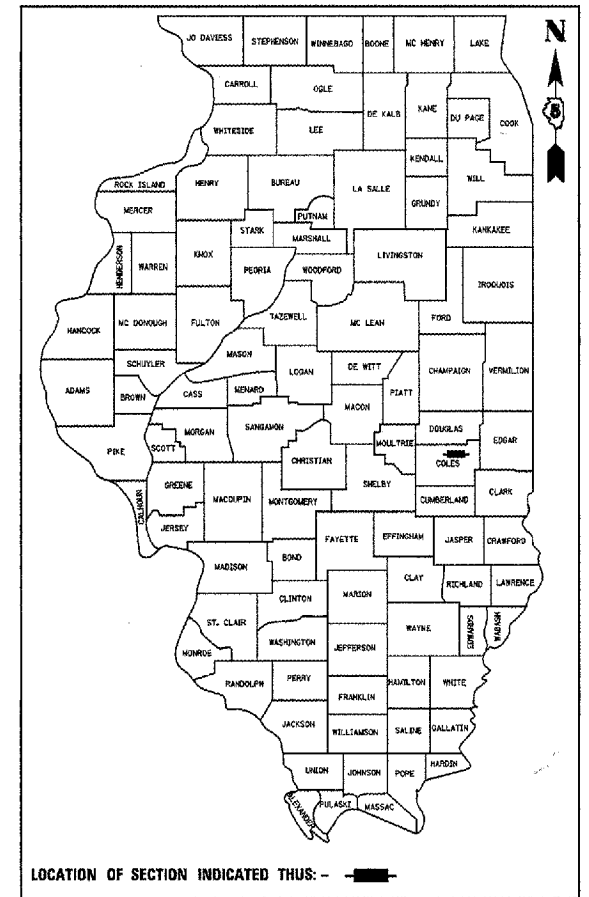
F.A.P. RTE.	SECTION	COUNTY	TOTAL SHEETS	SHEET NO.
749	(122BR)BR	COLES	49	1

STATE OF ILLINOIS
 DEPARTMENT OF TRANSPORTATION
 DIVISION OF HIGHWAYS
**PROPOSED
 HIGHWAY PLANS**

F.A.P. ROUTE 749 (IL. ROUTE 133)
 SECTION (122BR)BR
 PROJ. NO. ACBRF 0749 (020)
 BRIDGE REPLACEMENT
 COLES COUNTY
 C-97-039-06

FOR INDEX OF SHEETS, SEE SHEET NO. 2

D95-013-03



STATE OF ILLINOIS
 DEPARTMENT OF TRANSPORTATION
 DIVISION OF HIGHWAYS

SUBMITTED *June 20 06*
 DEPUTY DIRECTOR OF HIGHWAYS, REGION ENGINEER

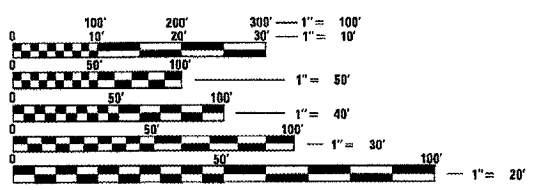
October 13, 2006
 Mike Hine
 ENGINEER OF DESIGN AND ENVIRONMENT

October 13, 2006
 Milton R. Sees P.E.
 DIRECTOR OF HIGHWAYS, CHIEF ENGINEER

**PRINTED BY THE AUTHORITY
 OF THE STATE OF ILLINOIS**
BLANK, WESSELINK, COOK & ASSOCIATES
 ENGINEERS - CONSULTANTS
 DECATUR, ILLINOIS

Charles W. Guthrie, Jr.
 CHARLES W. GUTHRIE, JR., P.E.
 DATE *July 20 20 06*
 EXPIRES NOVEMBER 30, 2007

PROJECT ENGINEER: KENSIL GARNETT (217) 465-4181
 CONSULTANT LIAISON: NANCY FASIG



FULL SIZE PLANS HAVE BEEN PREPARED USING STANDARD ENGINEERING SCALES. REDUCED SIZED PLANS WILL NOT CONFORM TO STANDARD SCALES. IN MAKING MEASUREMENTS ON REDUCED PLANS, THE ABOVE SCALES MAY BE USED.

J.U.L.I.E.
 JOINT UTILITY LOCATION INFORMATION FOR EXCAVATION
 1-800-892-0123

CONTRACT NO. 74146

