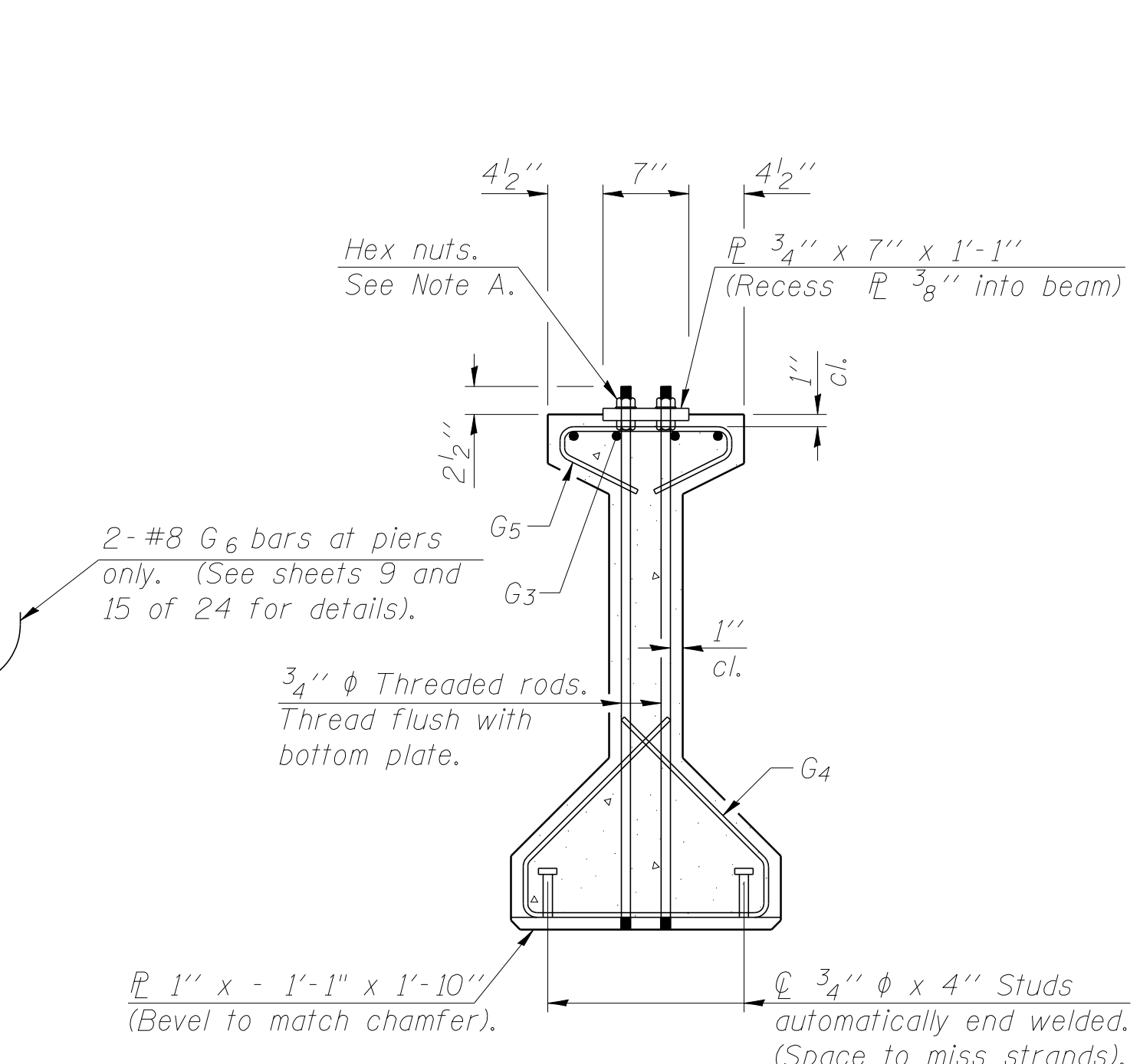
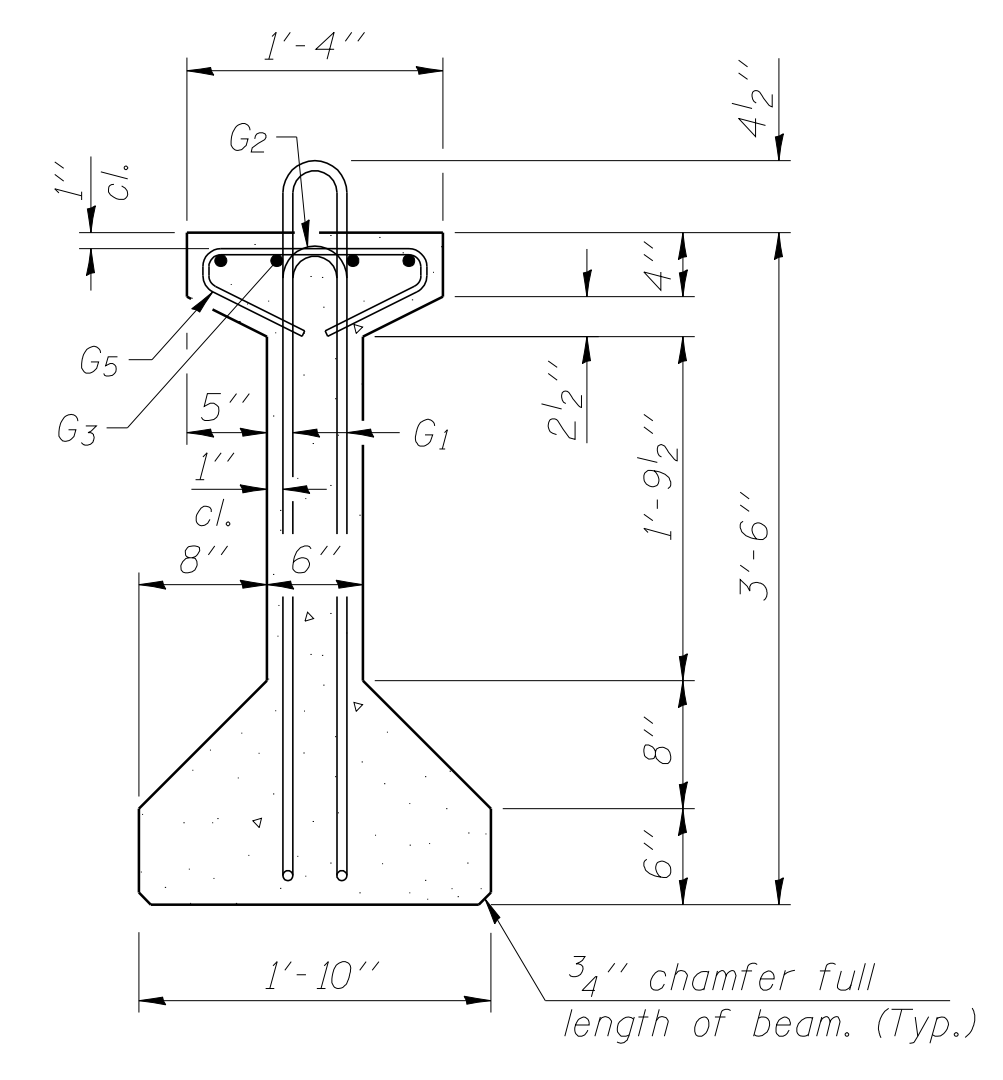


ELEVATION OF BEAM
(Showing reinforcement & dimensions)

* 3 spaces at 3" = 9".
** 4-3/4" φ threaded dowel rods at 3" cts., each face.

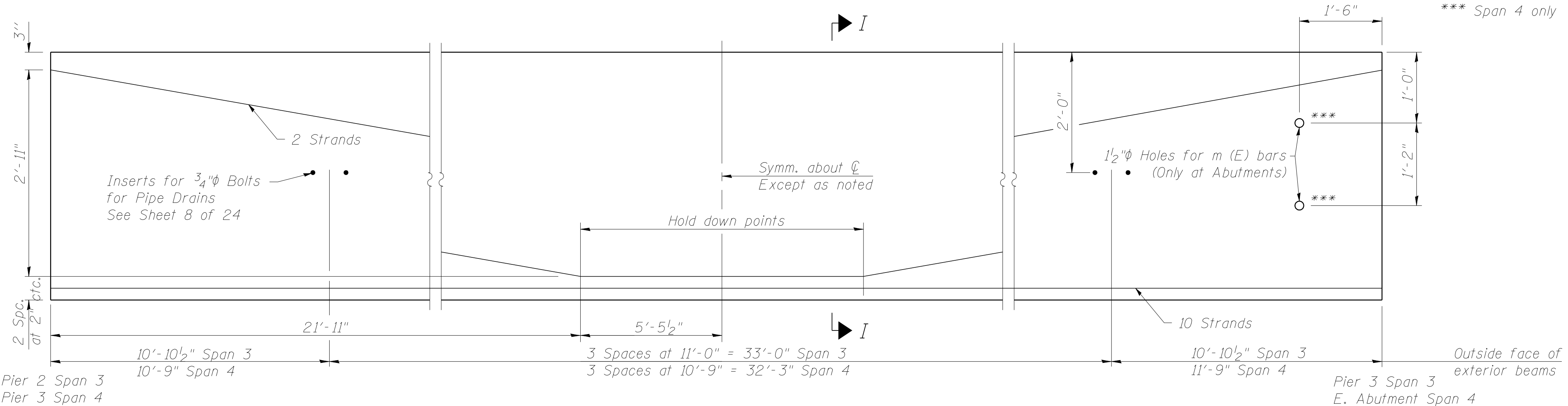


SECTION G-G

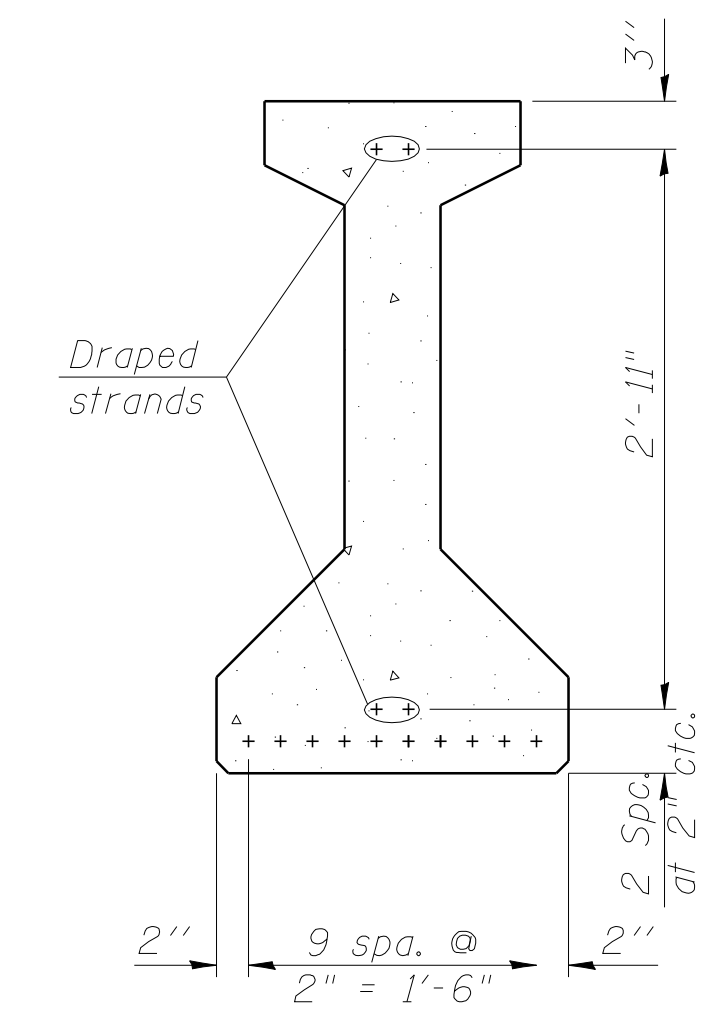


SECTION H-H

Note A:
Hex nuts (top and bottom) with lock washers (top). Only tighten sufficiently to compress lock washers.



ELEVATION OF BEAM
(Showing prestressing steel and inserts)



SECTION I-I

BAR LIST
ONE BEAM ONLY

Bar	No.	Size	Length	Shape
G1	45	#4	8'-5"	∩ L
G2	45	#4	4'-4"	∩
G3	8	#6	28'-7"	—
G4	38	#3	4'-11"	∩
G5	56	#3	2'-6"	∩
G6	****4	#8	3'-9"	U

****Span 3 = 4, Span 4 = 2

NOTES:
See sheet 15 of 24 for additional details, notes and Bill of Material.
Required release strength, f'ci, shall be 5,000 psi.

PI-4-42 7-15-05