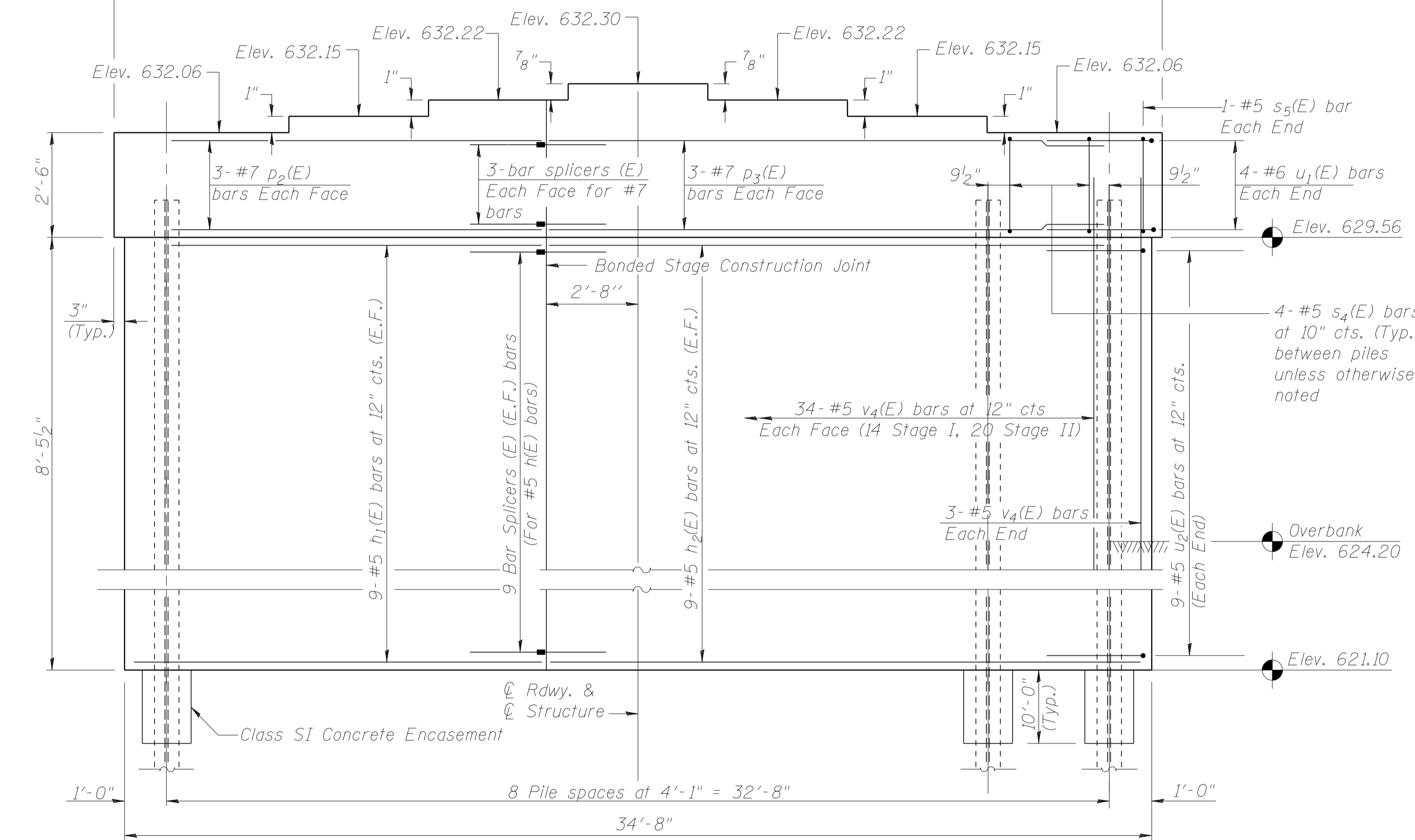
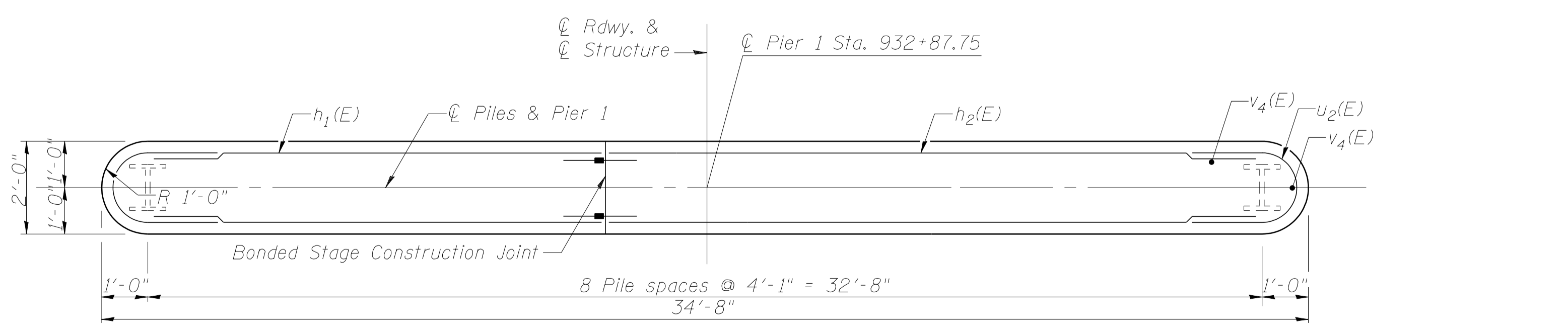


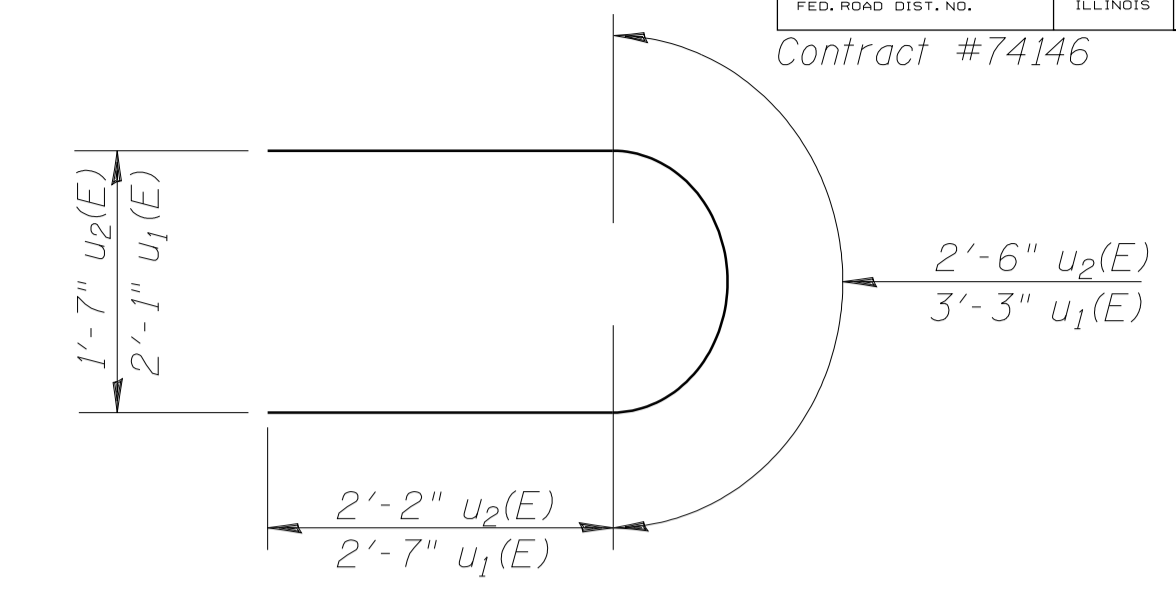
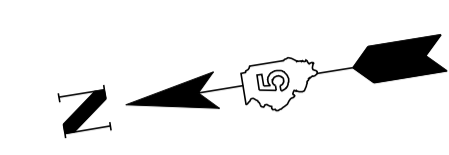
TOP PLAN



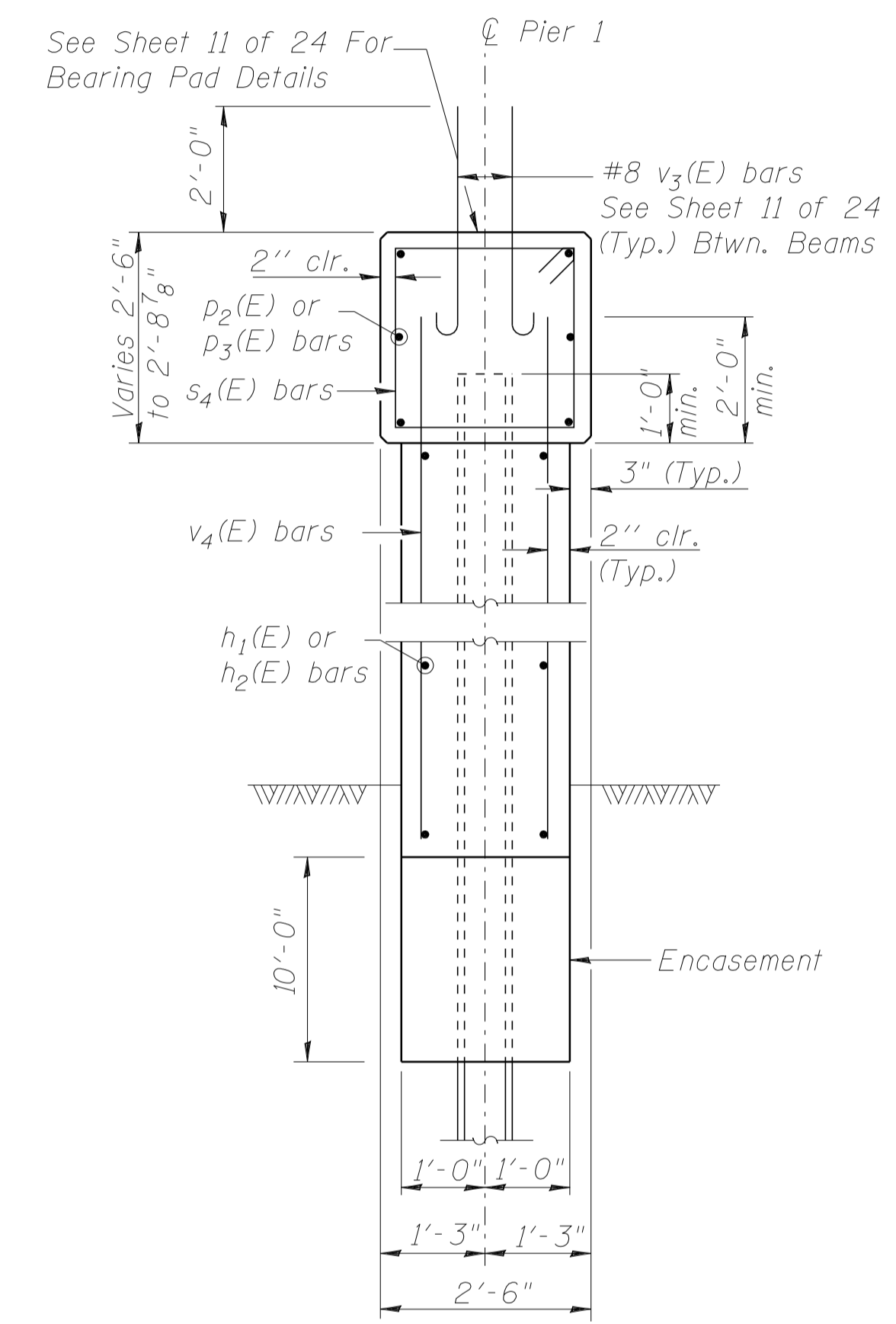
ELEVATION (Looking East)



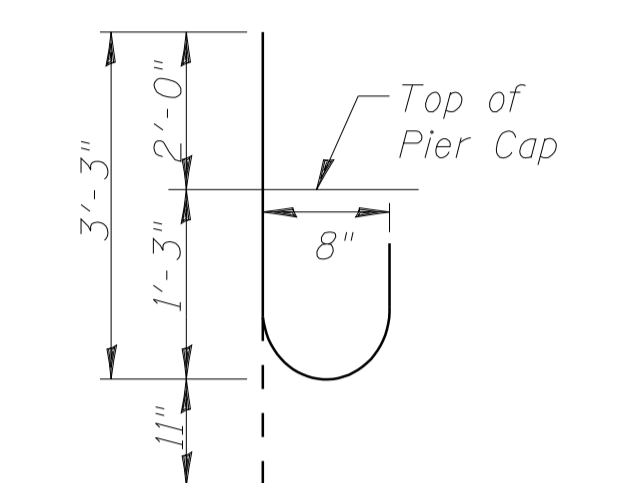
PILE LAYOUT



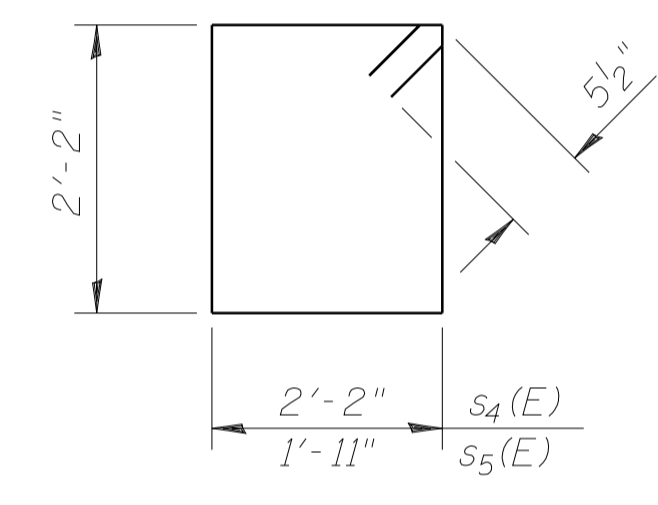
BARS u₁(E) & u₂(E)



PIER SECTION



BAR v₃(E)



BAR s₄(E) & s₅(E)

BILL OF MATERIAL

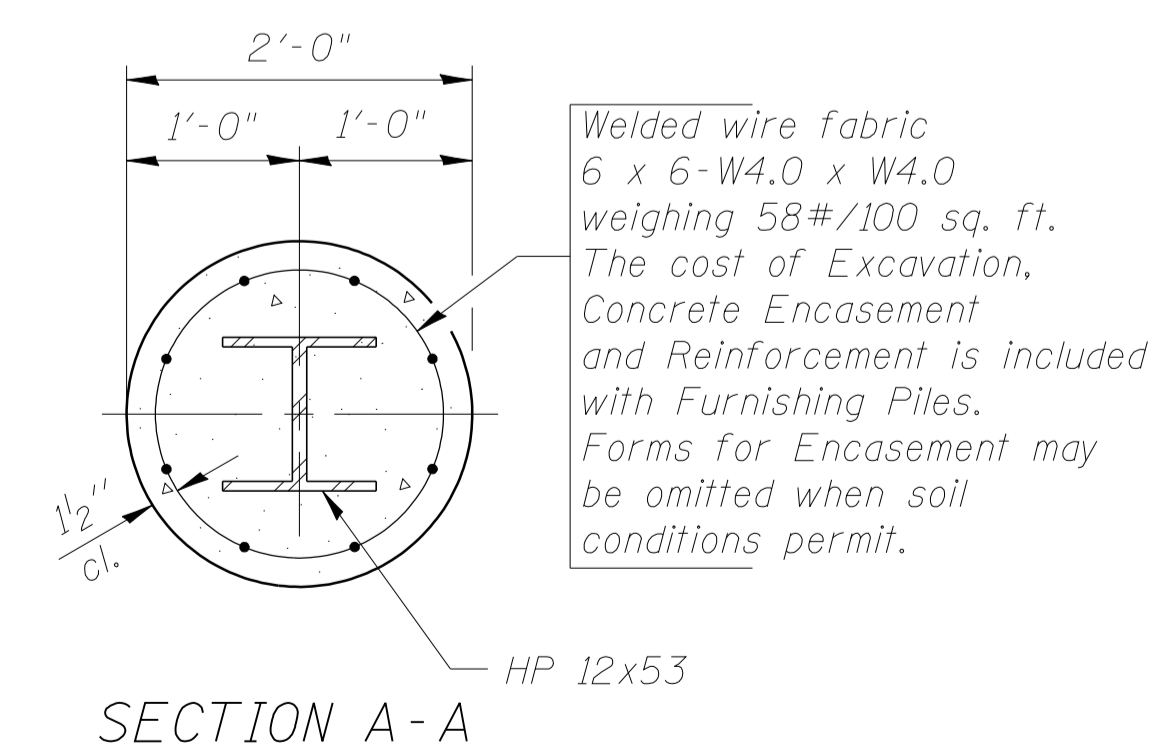
Bar	No.	Size	Length	Shape
h ₁ (E)	18	#5	13'-7"	—
h ₂ (E)	18	#5	18'-11"	—
p ₂ (E)	6	#7	13'-7"	—
p ₃ (E)	6	#7	18'-11"	—
s ₄ (E)	32	#5	9'-7"	□
s ₅ (E)	2	#5	9'-1"	□
u ₁ (E)	8	#6	8'-5"	U
u ₂ (E)	18	#5	6'-10"	U
v ₃ (E)	36	#8	4'-2"	U
v ₄ (E)	74	#5	10'-4"	—
Item		Unit	Quantity	
Furnishing Steel Piles HP 12x53		Foot	297	
Driving Steel Piles		Foot	297	
Concrete Structures		Cu. Yd.	29.8	
Reinforcement Bars, Epoxy Coated		Pound	2780	
Structure Excavation		Cu. Yd.	25.8	

NOTES

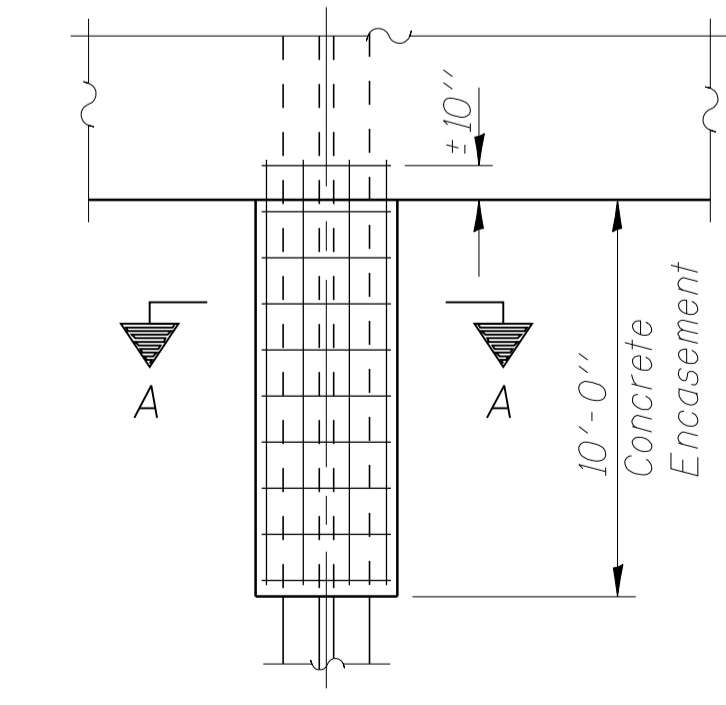
Four steps monolithically with cap. Reinforcement bars designated (E) shall be epoxy coated. For anchor bolt installation see sheet 21 of 24. Space reinforcement in cap to miss anchor bolts. All edges shall have standard 3/4" chamfers except as noted.

PILE DATA

Type: HP 12x53
Driven to: Refusal
Est. Length: 33'
No. Req'd: 9



SECTION A-A



PILE ENCASEMENT DETAIL

ILLINOIS DEPARTMENT OF TRANSPORTATION

PIER 1

IL ROUTE 133 OVER THE LITTLE EMBARRAS RIVER

F.A.P. ROUTE 749 SECTION (I22BR)BR

COLES COUNTY

STATION 933+50.00

STRUCTURE NO. 015-0074