

BILL OF MATERIAL

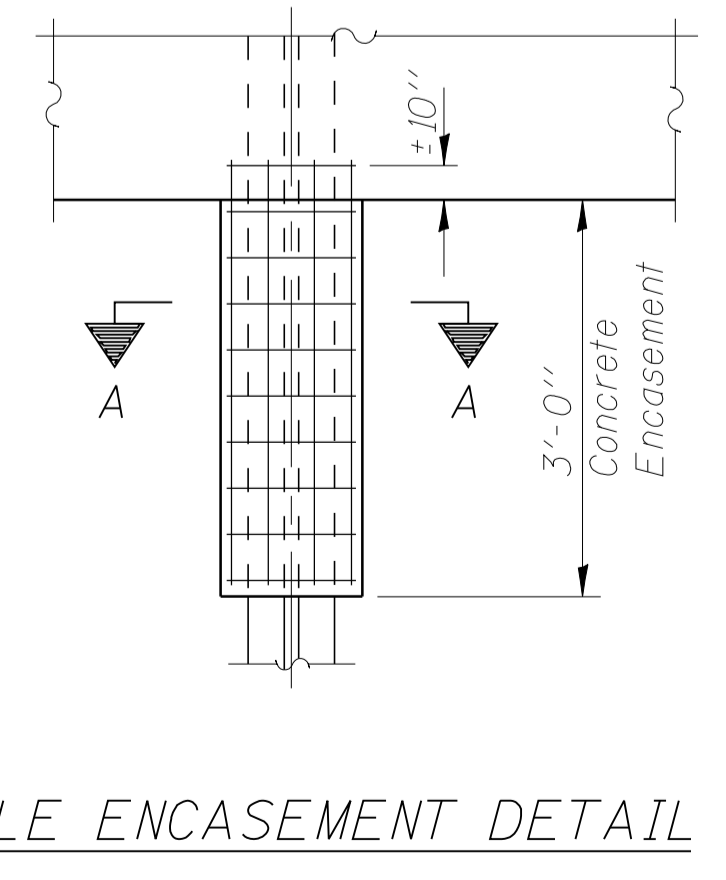
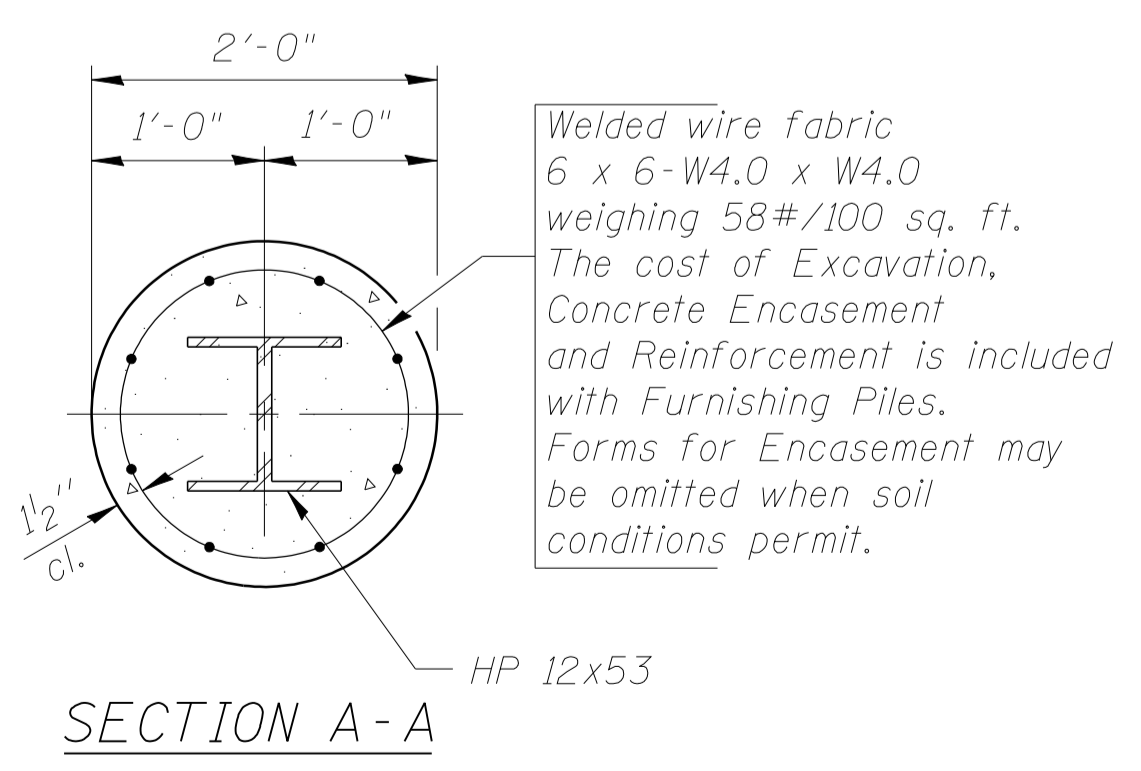
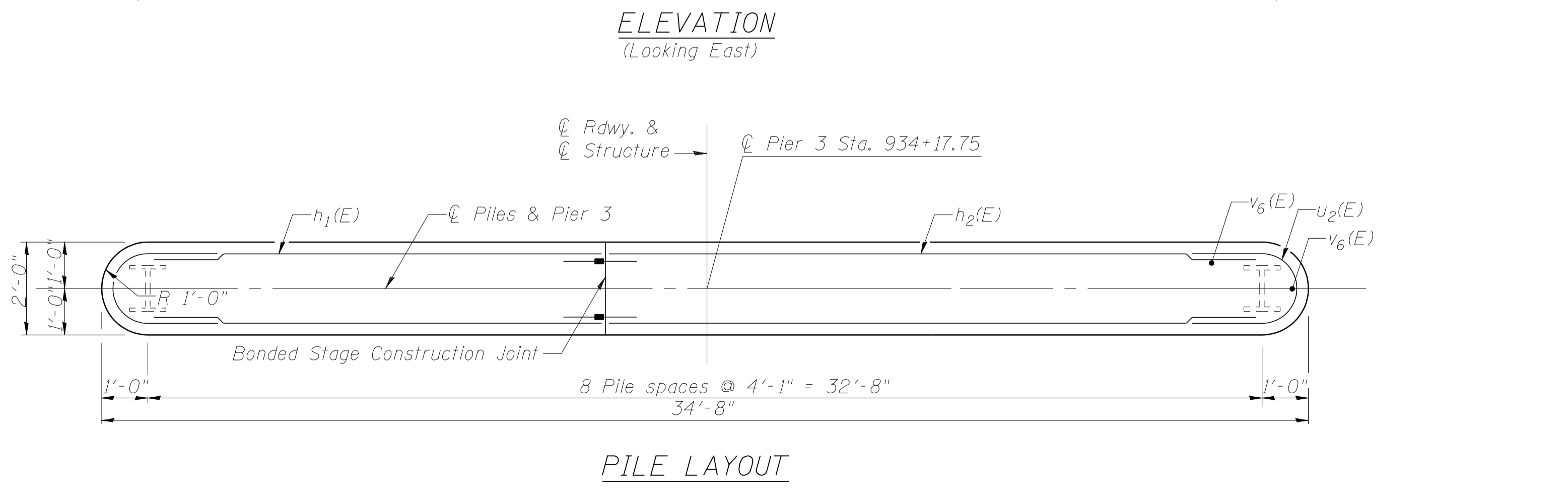
| Bar | No. | Size | Length | Shape |
|----------------------------------|---------|----------|---------|-------|
| h ₁ (E) | 16 | #5 | 13'-7" | — |
| h ₂ (E) | 16 | #5 | 18'-11" | — |
| p ₂ (E) | 6 | #7 | 13'-7" | — |
| p ₃ (E) | 6 | #7 | 18'-11" | — |
| s ₄ (E) | 32 | #5 | 9'-7" | □ |
| s ₅ (E) | 2 | #5 | 9'-1" | □ |
| u ₁ (E) | 8 | #6 | 8'-5" | U |
| u ₂ (E) | 16 | #5 | 6'-10" | U |
| v ₃ (E) | 36 | #8 | 4'-2" | — |
| v ₆ (E) | 74 | #5 | 9'-2" | — |
| Item | Unit | Quantity | | |
| Furnishing Steel Piles HP 12x53 | Foot | 297 | | |
| Driving Steel Piles | Foot | 297 | | |
| Concrete Structures | Cu. Yd. | 27.0 | | |
| Reinforcement Bars, Epoxy Coated | Pound | 2610 | | |
| Structure Excavation | Cu. Yd. | 8.6 | | |

NOTES

Four steps monolithically with cap. Reinforcement bars designated (E) shall be epoxy coated. For anchor bolt installation see sheet 21 of 24. Space reinforcement in cap to miss anchor bolts. All edges shall have standard 3/4" chamfers except as noted.

PILE DATA

Type: HP 12x53
Driven to: Refusal
Est. Length: 33'
No. Req'd: 9



ILLINOIS DEPARTMENT OF TRANSPORTATION

PIER 3

IL ROUTE 133 OVER THE LITTLE EMBARRAS RIVER
F.A.P. ROUTE 749 SECTION (I22BR)BR
COLES COUNTY
STATION 933+50.00
STRUCTURE NO. 015-0074