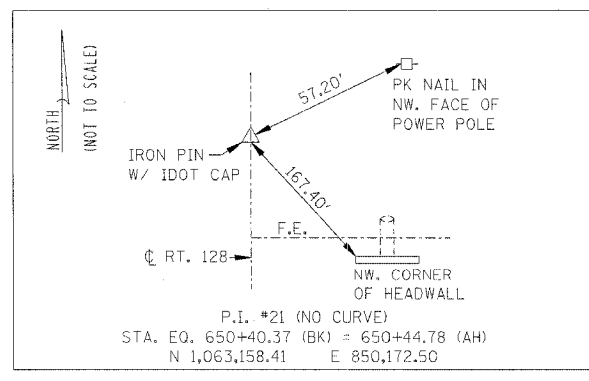
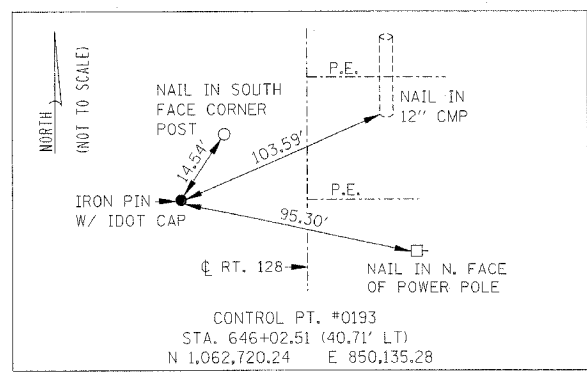
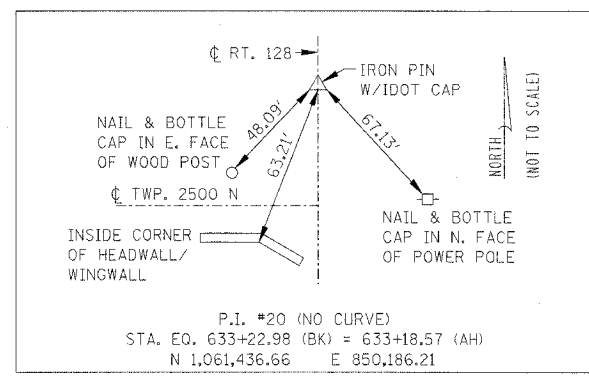
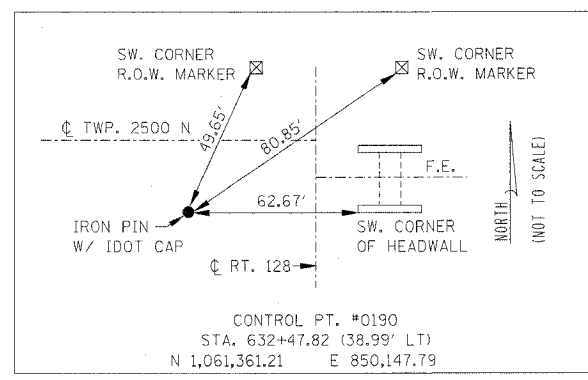
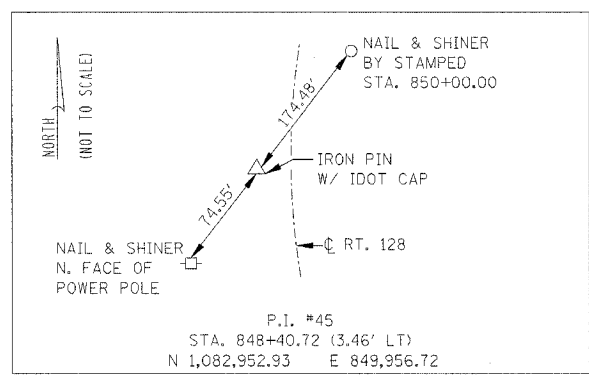
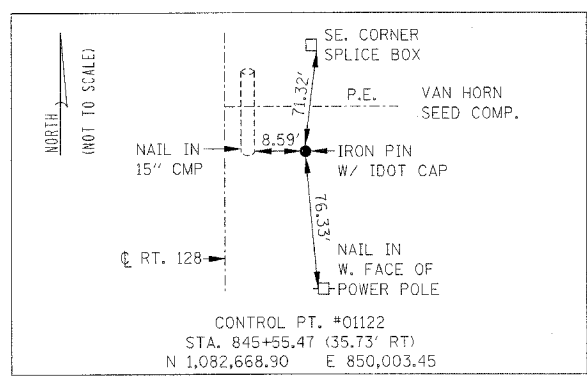
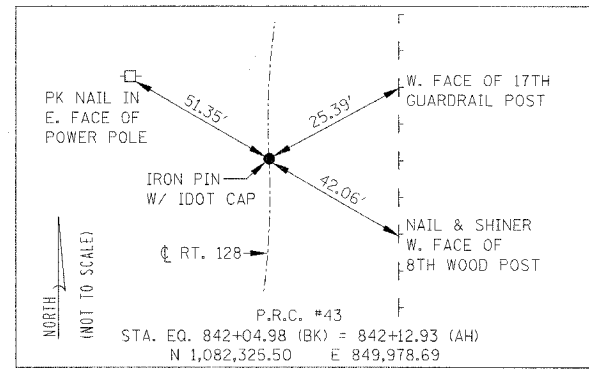
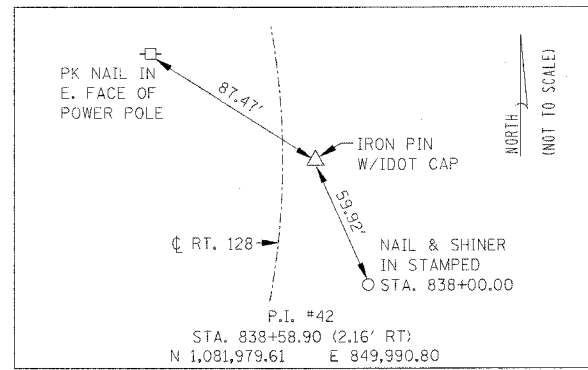
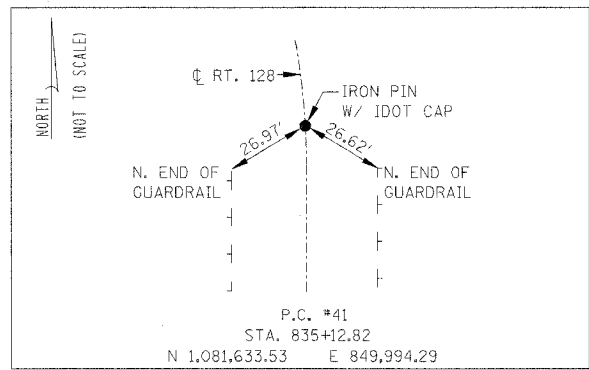
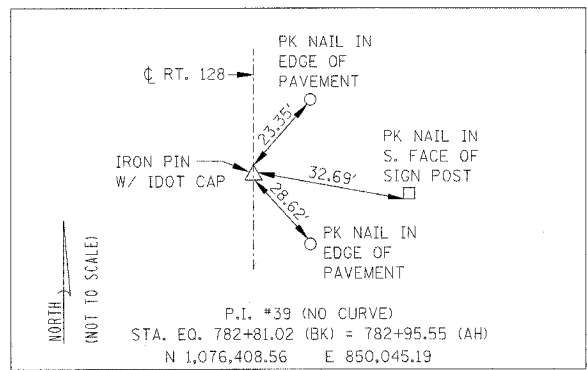


F.A.P. RTE.	SECTION	COUNTY	TOTAL SHEETS	SHEET NO.
770	(115,116)BR	SHELBY & MOULTRIE	77	12
STA. N/A	TO STA. N/A			
FED. ROAD DIST. NO.	ILLINOIS	FED. AID PROJECT		
CONTRACT NO. 74148				

BENCHMARK DATA

NUMBER	DESCRIPTION	ELEVATION	STATION	OFFSET
4647-49	I.P. WITH CAP W. SIDE OF RT-128, 4 MILES NORTH OF RT-128/FINDLAY RD. S.W. QUAD OF RT-128/2500N PANEL # 0190	668.54	632+48	39' LT
4647-49A	CHISELED SQUARE ON THE N.E. WINGWALL OF SN 070-0021	665.84	640+11	28' RT
4647-58	CHIS. SQUARE ON TOP OF N.E. W.W. BR 70-0029 STA 772+48	667.40	772+63	20' RT
4647-61	CHIS. SQUARE ON TOP N.E. W.W @ BR 70-0019 STA 833+59 (1.20 MILES S. OF SHELBY)	672.98	833+69	21' RT



REVISIONS	
NAME	DATE

ILLINOIS DEPARTMENT OF TRANSPORTATION
 F.A.P. ROUTE 770 (ILLINOIS ROUTE 128)
 BENCHMARK DESCRIPTIONS
 AND LOCATIONS,
 TIES AND BENCHMARKS
 CENTERLINE AND CONTROL
 SCALE: N/A POINT TIES DRAWN BY VARIOUS
 DATE: 03-20-06 CHECKED BY MBF