

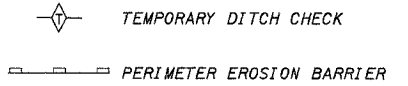
EXISTING STRUCTURE NO 95-0024
 SINGLE SPAN REINFORCED T-BEAM BRIDGE
 ON CLOSED ABUTMENTS WITH TIMBER PILES
 53'-0" BK TO BK ABUTMENTS, 43'-6" O TO O DECK

REMOVAL OF EXISTING STRUCTURES-1 EACH
 (TO BE REMOVED IN STAGES)

Exist. Curve C1
 PI Sta. 484+17.40
 $\Delta = 44^\circ 23' 09''$ (RT)
 $D = 4^\circ 23' 56''$
 $T = 531.35'$
 $R = 1,302.50'$
 $L = 1,009.02'$
 $E = 104.21'$
 PC Sta. 478+86.04
 PT Sta. 488+95.06
 SE 6.3%

F&P ROUTE	SECTION	COUNTY	TOTAL SHEETS	SHEET NO
42	2BR	WASHINGTON	33	11
STA.		TO STA.		
EXISTING CONDITIONS:				
CONTRACT NO. 76389				

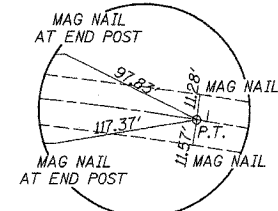
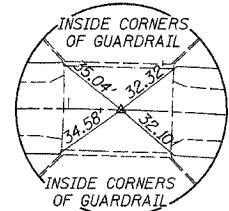
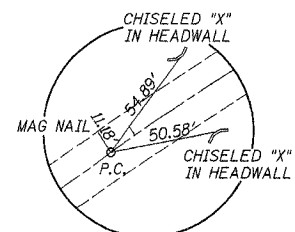
TEMPORARY EROSION CONTROL LEGEND



DATE	BY	REVISION
		DESIGNED
		PLOTTED
		CHECKED
		DATE FILED

PLAN

INDICATES LIMITS OF PAVEMENT REMOVAL

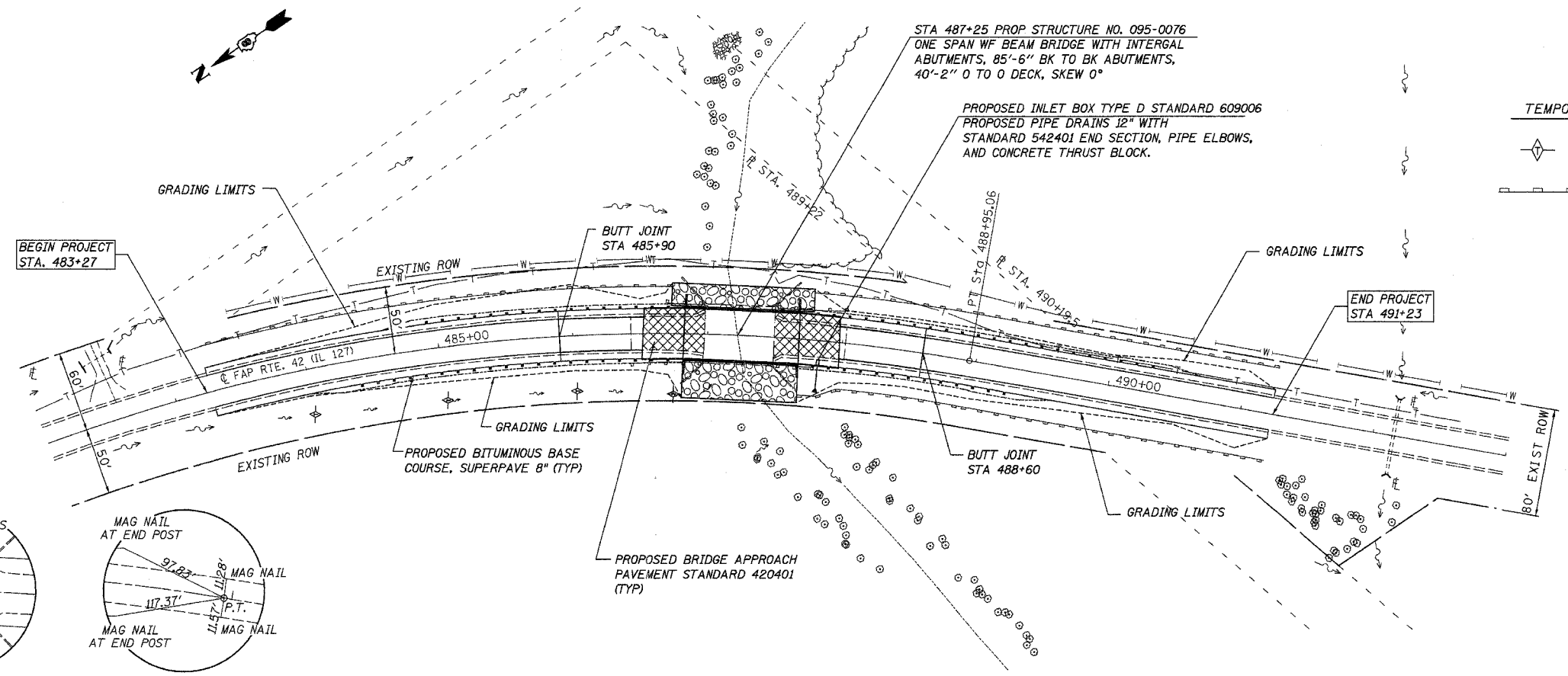
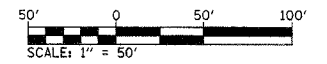


P.C. STA. 478+86.04
 MAG NAIL

STA. 487+25
 CHISELED "X"

P.T. STA. 488+95.60
 MAG NAIL

SEC. 31 T.1N R.2W, 3RD P.M.



DATE	BY	REVISION
		DESIGNED
		PLOTTED
		CHECKED
		DATE FILED

PROFILE

