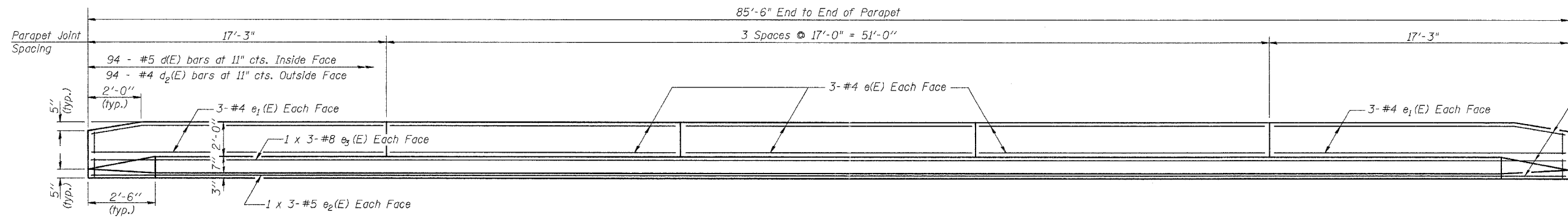


ROUTE NO.	SECTION	COUNTY	TOTAL SHEETS	SHEET NO.
F.A.P. 42	2BR	WASHINGTON	33	21
FED. ROAD DIST. NO. 8		ILLINOIS PROJECT	CONTRACT #76389	
Sheet 7 of 16				



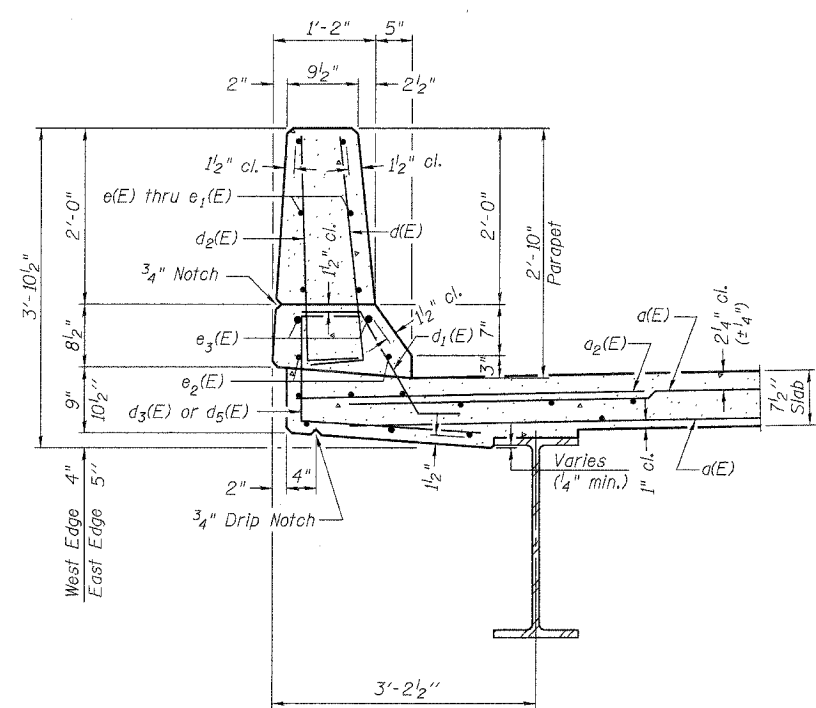
INSIDE ELEVATION OF PARAPET

MIN. BAR LAPS

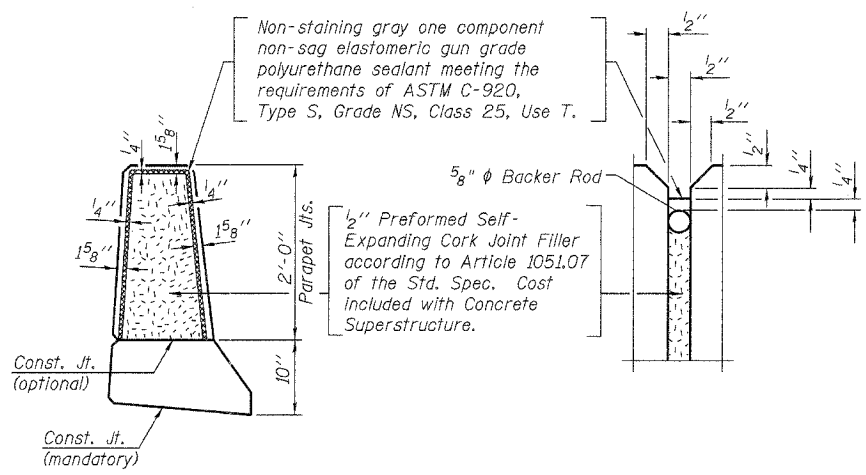
- #5 Bar = 2'-2"
- #8 Bar = 4'-6"

SUPERSTRUCTURE BILL OF MATERIAL

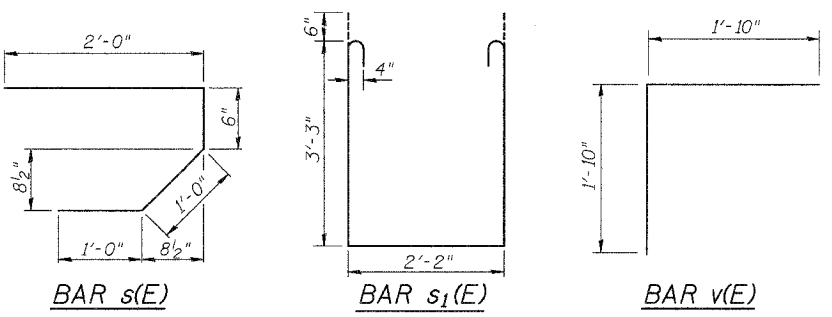
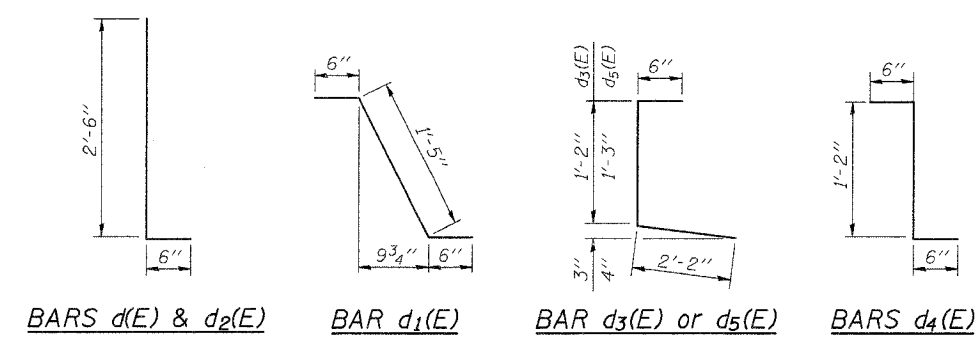
Bar	No.	Size	Length	Shape
a(E)	544	#5	19'-6"	—
a1(E)	158	#6	4'-6"	—
b(E)	168	#5	22'-7"	—
b1(E)	108	#5	29'-6"	—
d(E)	188	#5	3'-0"	┌
d1(E)	176	#5	2'-5"	┌
d2(E)	188	#4	3'-0"	┌
d3(E)	94	#4	3'-10"	┌
d4(E)	12	#5	2'-2"	┌
d5(E)	94	#4	3'-11"	┌
e(E)	36	#4	16'-8"	—
e1(E)	24	#4	16'-11"	—
e2(E)	12	#5	29'-10"	—
e3(E)	12	#8	31'-5"	—
m(E)	8	#6	19'-0"	—
m1(E)	12	#6	19'-9"	—
m2(E)	24	#6	8'-5"	—
m3(E)	10	#6	6'-5"	—
m4(E)	4	#6	2'-10"	—
s(E)	84	#5	4'-6"	└
s1(E)	72	#4	9'-8"	└
v(E)	80	#5	3'-8"	└
Reinforcement Bars, Epoxy Coated		Pound	25550	
Concrete Superstructure		Cu. Yds.	132.4	
Bar Splicers		Each	360	



SECTION THRU PARAPET



PARAPET JOINT DETAILS



Reinforcement bars designated (E) shall be epoxy coated.  
 Bars indicated thus 1 x 3 - #5 etc. indicates 1 line of bars with 3 lengths per line.

DESIGNED	Ruben V. Boehler
CHECKED	Tim S. Howard
DRAWN	Nicole L. Darling
CHECKED	Michael D. Cummins

**SUPERSTRUCTURE DETAILS**

IL ROUTE 127 OVER TRIBUTARY TO CROOKED CREEK  
 F.A.P. ROUTE 42 SECTION 2BR  
 WASHINGTON COUNTY  
 STA. 487+25  
 S.N. 095-0076

CUMMINS ENGINEERING CORPORATION	JOB #: 2158 FILE: 2158SUPER DATE: 12/14/04
---------------------------------	--