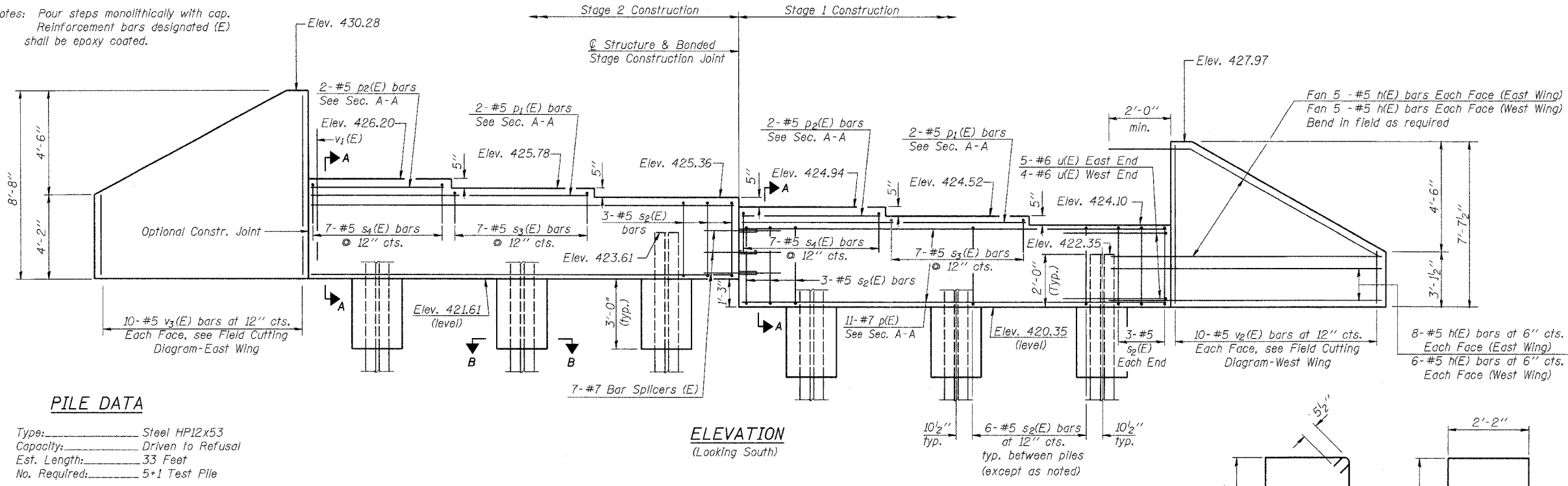


ROUTE NO.	SECTION	COUNTY	TOTAL SHEETS	SHEET NO.
F.A.P. 42	2BR	WASHINGTON	33	26
FED. ROAD DIST. NO. 8		ILLINOIS PROJECT		
Sheet 12 of 16			CONTRACT #76389	

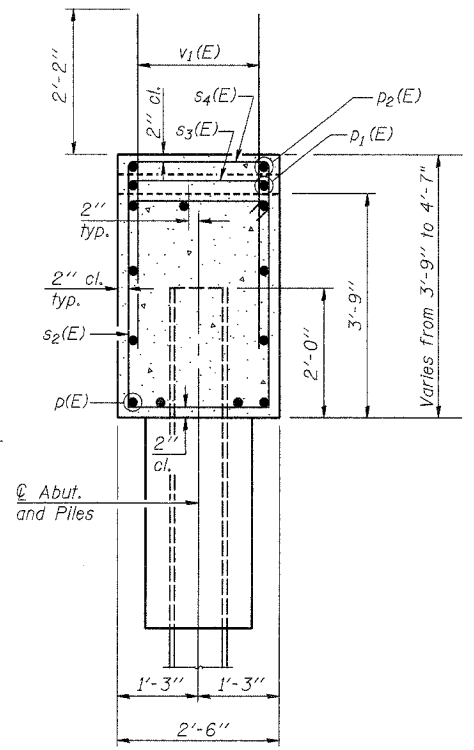
Notes: Four steps monolithically with cap. Reinforcement bars designated (E) shall be epoxy coated.



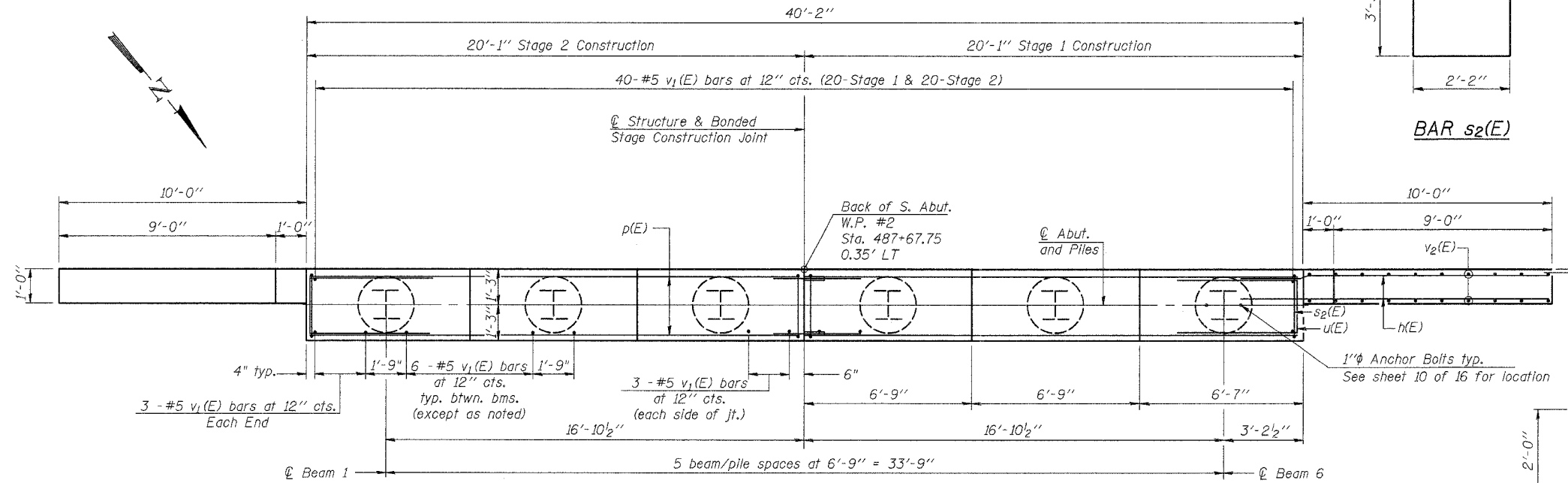
**PILE DATA**

Type: Steel HP12x53  
 Capacity: Driven to Refusal  
 Est. Length: 33 Feet  
 No. Required: 5+1 Test Pile

**ELEVATION**  
(Looking South)



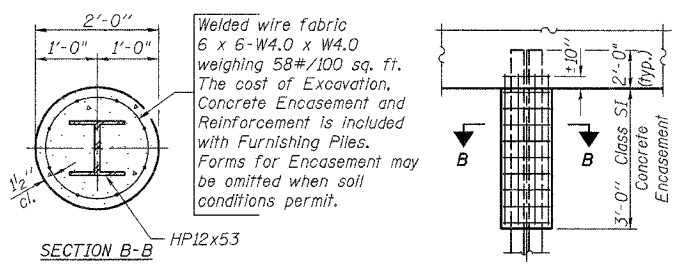
**SECTION A-A**



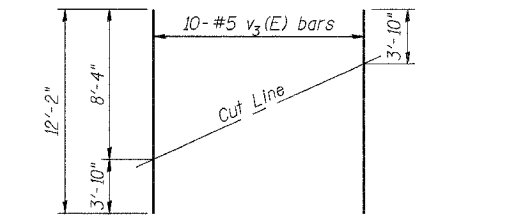
**PLAN**

**BILL OF MATERIAL - SOUTH ABUT.**

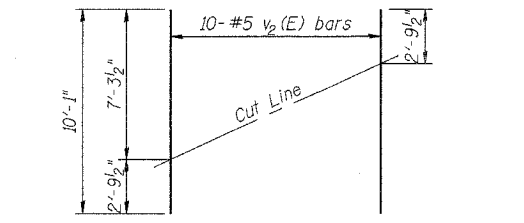
Bar	No.	Size	Length	Shape
h(E)	48	#5	12'-10"	—
p(E)	22	#7	19'-9"	—
p1(E)	4	#5	13'-0"	—
p2(E)	4	#5	6'-3"	—
s2(E)	36	#5	12'-1"	□
s3(E)	14	#5	5'-2"	□
s4(E)	14	#5	6'-0"	□
u(E)	9	#6	12'-0"	□
v1(E)	76	#5	4'-4"	—
v2(E)	10	#5	10'-1"	—
v3(E)	10	#5	12'-2"	—
Concrete Structures		Cu. Yd.	20.1	
Reinforcement Bars, Epoxy Coated		Pound	2970	
Structure Excavation		Cu. Yd.	115	
Bar Splicers		Each	7	
Furnishing Steel Piles HP12x53		Foot	165	
Driving Steel Piles HP12x53		Foot	165	
Test Pile Steel HP12x53		Each	1	



**PILE ENCASEMENT DETAIL**



**FIELD CUTTING DIAGRAM - EAST WING**



**FIELD CUTTING DIAGRAM - WEST WING**

**BAR u(E)**

**SOUTH ABUTMENT**  
 IL ROUTE 127 OVER TRIBUTARY TO CROOKED CREEK  
 F.A.P. ROUTE 42 SECTION 2BR  
 WASHINGTON COUNTY  
 STA. 487+25  
 S.N. 095-0076

DESIGNED Ruben V. Boehler  
 CHECKED Tim S. Howard  
 DRAWN Nicole L. Darling  
 CHECKED Michael D. Cummins

CUMMINS ENGINEERING CORPORATION  
 JOB #: 2158  
 FILE: 2158ABUTS  
 DATE: 2/10/05