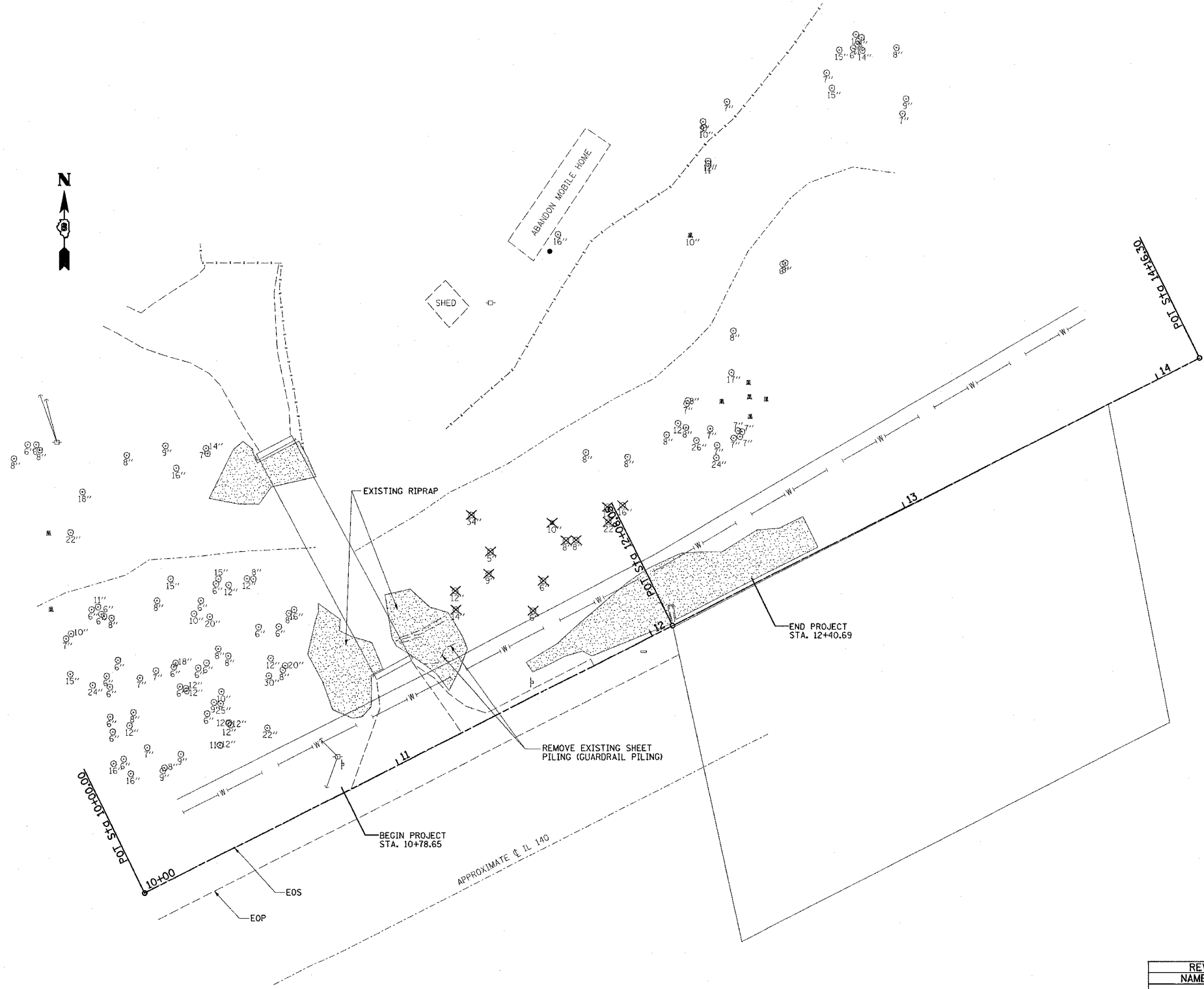


F.A.P. RTE.	SECTION	COUNTY	TOTAL SHEETS	SHEET NO.
785	132-3I-1	MADISON	14	4
STA.		TO STA.		
FED. ROAD DIST. NO.		ILLINOIS FED. AID PROJECT		



NOTE: 172 FOOT PERMETER EROSION BARRIER ALONG NORTH BANK

✕ TREE REMOVAL

PLOT DATE = 9/5/2006
 PLOT SCALE = 20.0000' / IN.
 REFERENCE = *REF*

REVISIONS	
NAME	DATE

ILLINOIS DEPARTMENT OF TRANSPORTATION
**PLAN VIEW
 REMOVAL**
 FAP ROUTE 785
 SECTION 132-3I-1
 MADISON COUNTY

SCALE: VERT.
 HORIZ.
 DATE

DRAWN BY
 CHECKED BY