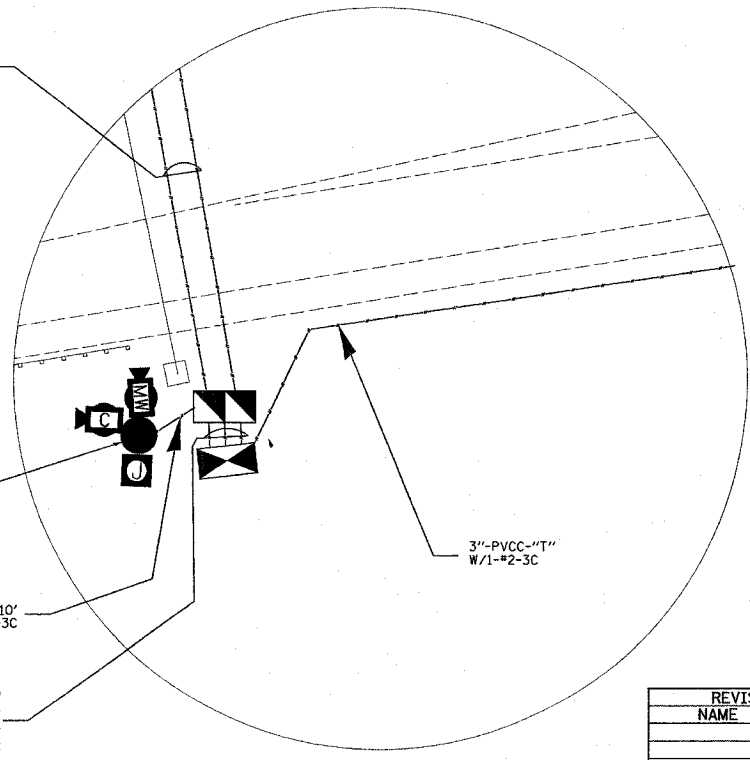
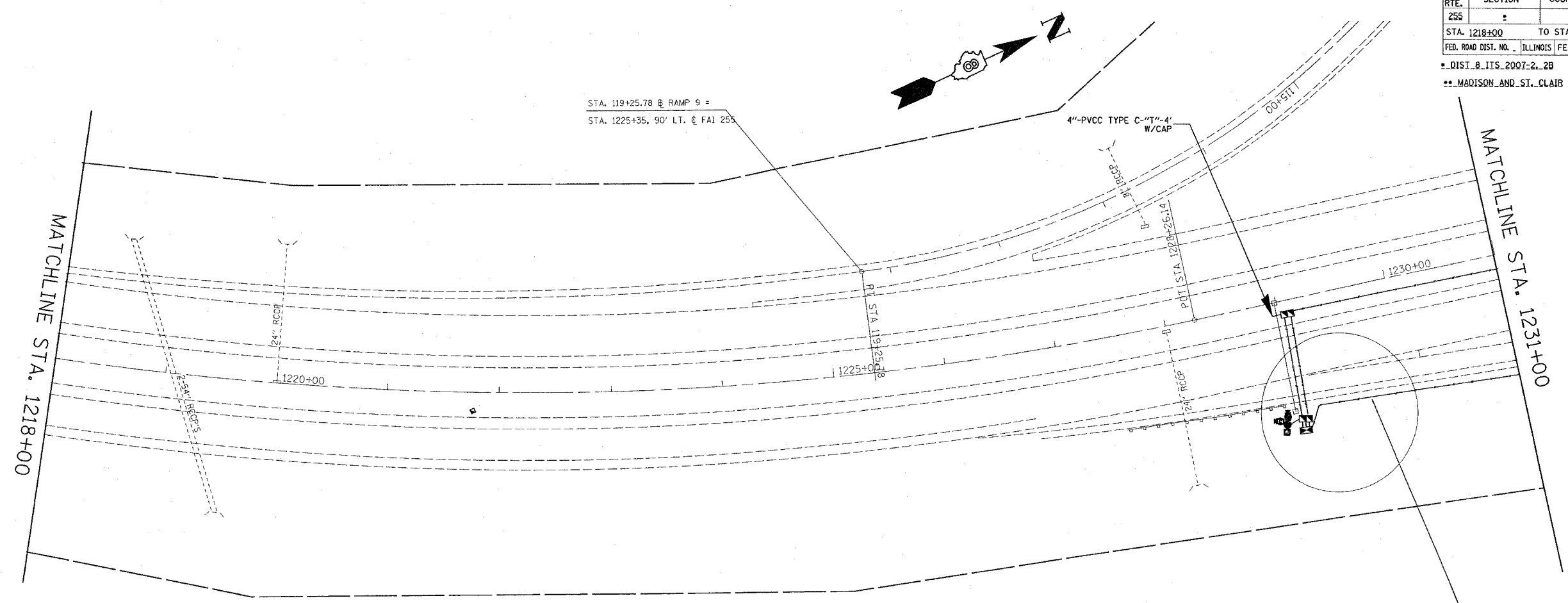


F.A.I. RTE.	SECTION	COUNTY	TOTAL SHEETS	SHEET NO.
255		**	21	12
STA. 1218±00		TO STA. 1231±00		
FED. ROAD DIST. NO. - ILLINOIS FED. AID PROJECT				
* DIST. 8 ITS 2007-2.2B				
** MADISON AND ST. CLAIR				



2-4"-PVCC TYPE C-"T"-17'(EACH)
 2-4"-PVCC SCH40-"P"-70'(EACH)
 1-W/ T2 COND S.M. F.O. CABLE &
 1-EMPTY FOR FUTURE USE

2-4"-PVCC TYPE C-"T"-10'(EACH)
 1-W/ T2 COND S.M. F.O. CABLE &
 1-EMPTY FOR FUTURE USE
 3"-PVCC-"T"-10'
 W/ 1-#18-6 PAIR & #10-3C

SHEET 1 OF 7

REVISIONS	
NAME	DATE

ILLINOIS DEPARTMENT OF TRANSPORTATION
ITS PLAN
 FAI 255
 SECTION DIST 8 ITS 2007-2, 2B
 MADISON AND ST. CLAIR COUNTIES

SCALE: VERT. _____
 HORIZ. _____
 DATE _____
 DRAWN BY _____
 CHECKED BY _____

PLOT DATE = 9/22/2006
 FILE NAME = c:\projects\add51986\electrical\map\itsplan.dwg
 PLOT SCALE = 1/8" = 1'-0"
 REFERENCE = REF#