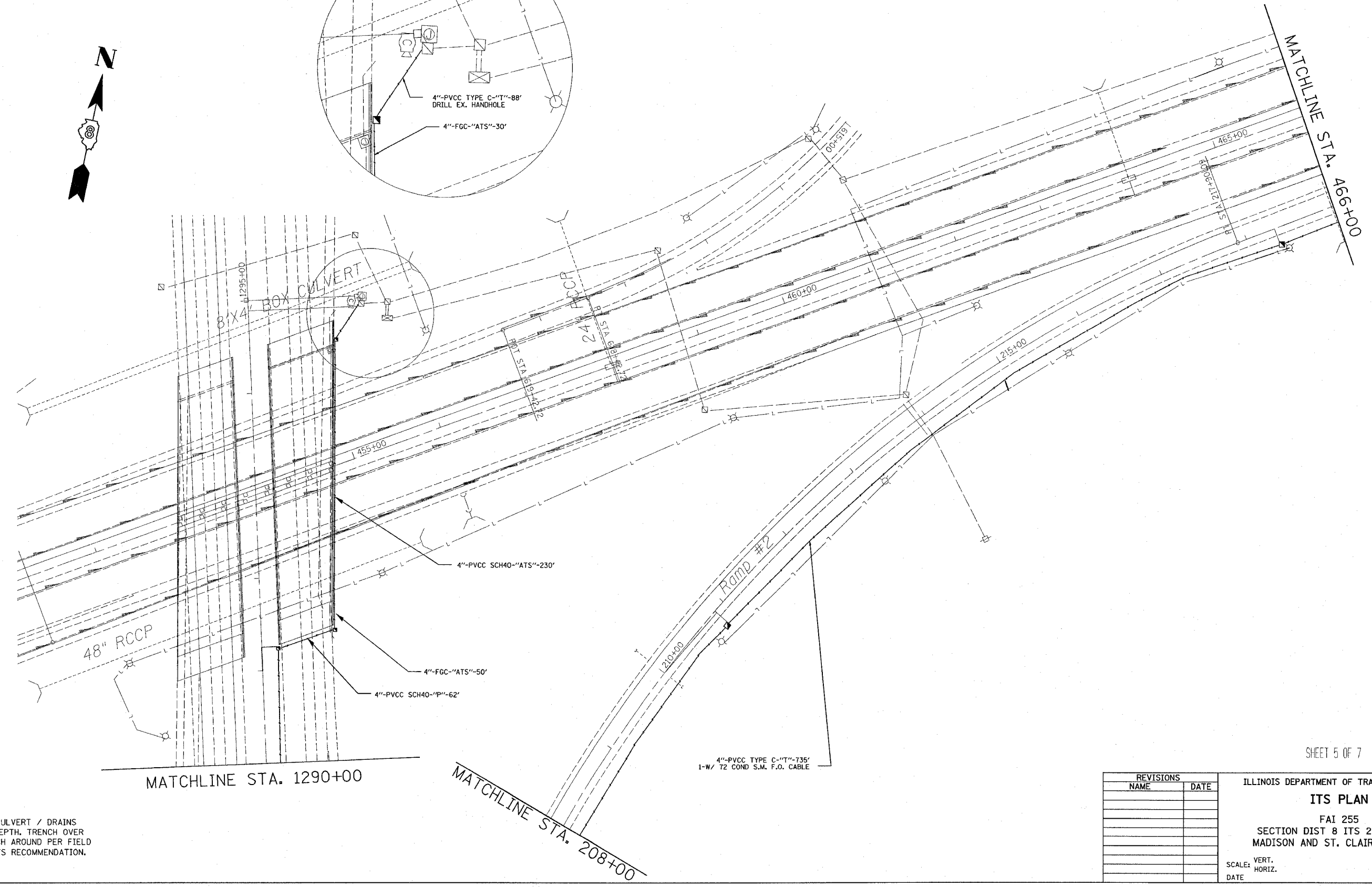
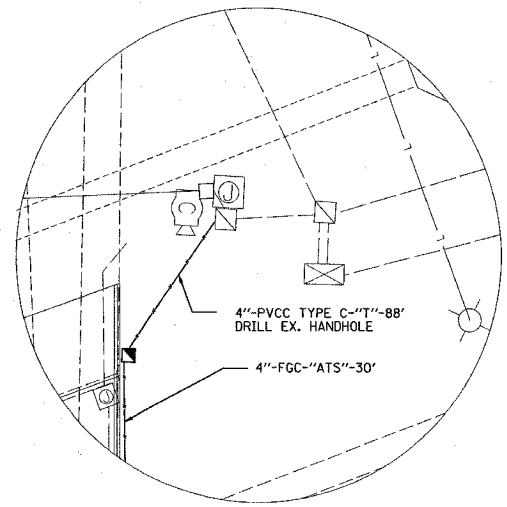


F.A.I. RTE.	SECTION	COUNTY	TOTAL SHEETS	SHEET NO.
255	*	**	21	16
STA. 466+00(1-55/70) TO STA. 1290+00(1-255)				
FED. ROAD DIST. NO. ILLINOIS FED. AID PROJECT				
* DIST. 8 ITS 2007-2, 2B				
** MADISON AND ST. CLAIR				



MATCHLINE STA. 1290+00

MATCHLINE STA. 208+00

SHEET 5 OF 7

LOCATE CULVERT / DRAINS
VERIFY DEPTH, TRENCH OVER
OR TRENCH AROUND PER FIELD
ENGINEER'S RECOMMENDATION.

PLOT DATE = 9/22/2006
PLOT SCALE = 1/8\"/>

REVISIONS	
NAME	DATE

ILLINOIS DEPARTMENT OF TRANSPORTATION
ITS PLAN
FAI 255
SECTION DIST 8 ITS 2007-2, 2B
MADISON AND ST. CLAIR COUNTIES
SCALE: VERT. DRAWN BY
 HORIZ. CHECKED BY
DATE