

SECTION	COUNTY	TOTAL SHEETS	SHEET NO.
02-00090-00-BT	DUPAGE	117	14
STA. TO STA.			
IDOT PROJECT NO. M-8003(222)			
SALT CREEK GREENWAY TRAIL			

CONTRACT NO. 83713

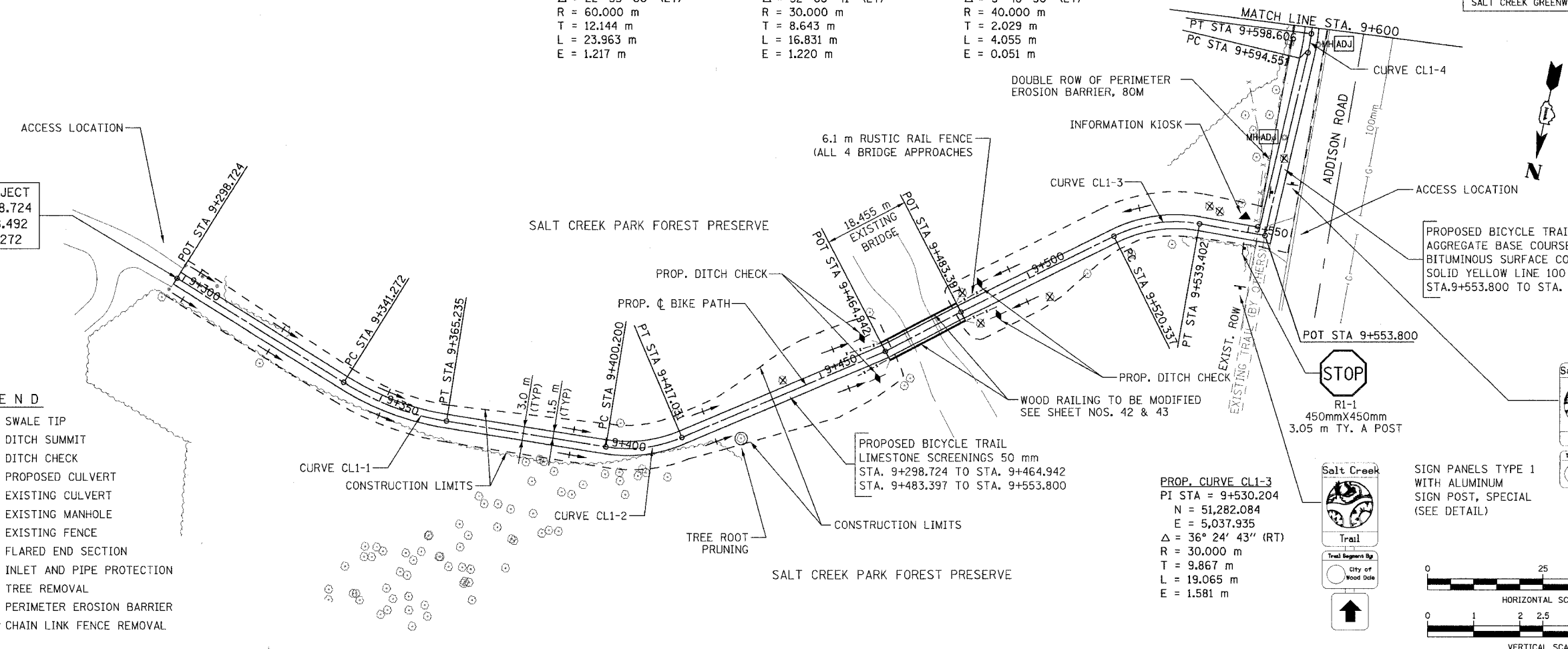
PROP. CURVE CL1-1
 PI STA = 9+353.415
 N = 51,358.169
 E = 5,190.869
 $\Delta = 22^\circ 53' 00''$ (LT)
 R = 60.000 m
 T = 12.144 m
 L = 23.963 m
 E = 1.217 m

PROP. CURVE CL1-2
 PI STA = 9+408.843
 N = 51,355.334
 E = 5,135.189
 $\Delta = 32^\circ 08' 41''$ (LT)
 R = 30.000 m
 T = 8.643 m
 L = 16.831 m
 E = 1.220 m

PROP. CURVE CL1-4
 PI STA = 9+596.580
 N = 51,238.497
 E = 5,012.787
 $\Delta = 5^\circ 48' 30''$ (LT)
 R = 40.000 m
 T = 2.029 m
 L = 4.055 m
 E = 0.051 m

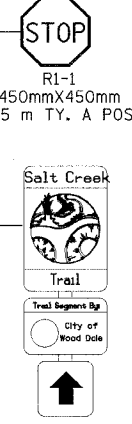
BEGIN PROJECT
 STA. 9+298.724
 N = 51,338.492
 E = 5,242.272

- LEGEND**
- +— SWALE TIP
 - +—+ DITCH SUMMIT
 - +— DITCH CHECK
 - +— PROPOSED CULVERT
 - - - EXISTING CULVERT
 - EXISTING MANHOLE
 - - - EXISTING FENCE
 - ▲ FLARED END SECTION
 - ⊗ INLET AND PIPE PROTECTION
 - ⊗ TREE REMOVAL
 - PERIMETER EROSION BARRIER
 - TTTTTT CHAIN LINK FENCE REMOVAL

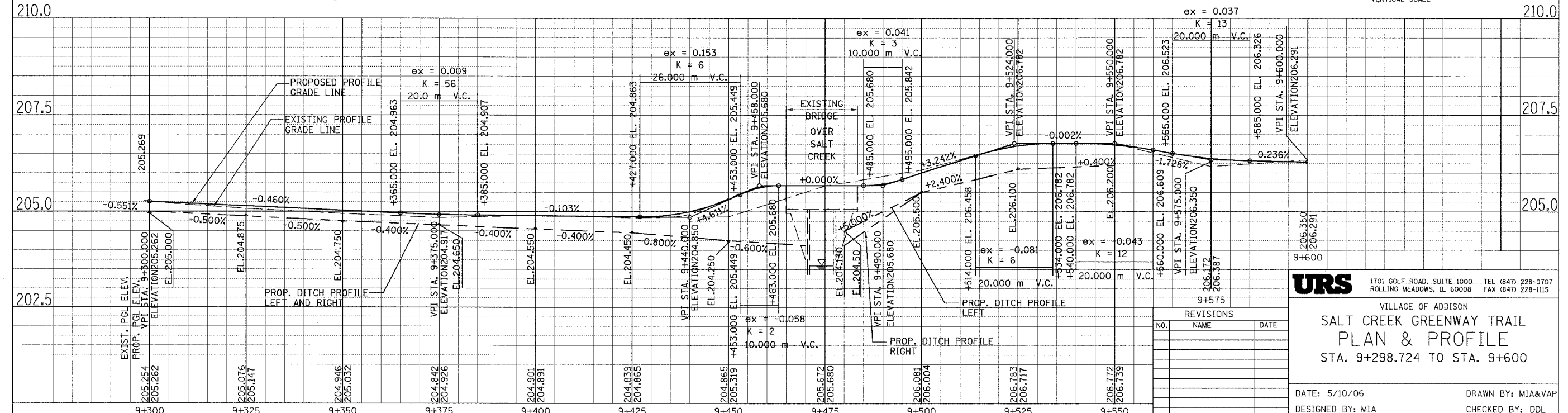
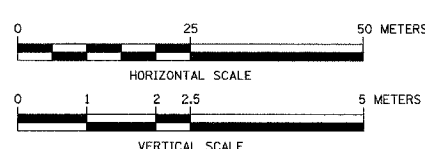


PROPOSED BICYCLE TRAIL
 AGGREGATE BASE COURSE, TYPE B, 150 mm
 BITUMINOUS SURFACE COURSE 50 mm
 SOLID YELLOW LINE 100 mm, ALONG ϕ
 STA. 9+553.800 TO STA. 9+600.000

PROP. CURVE CL1-3
 PI STA = 9+530.204
 N = 51,282.084
 E = 5,037.935
 $\Delta = 36^\circ 24' 43''$ (RT)
 R = 30.000 m
 T = 9.867 m
 L = 19.065 m
 E = 1.581 m



SIGN PANELS TYPE 1
 WITH ALUMINUM
 SIGN POST, SPECIAL
 (SEE DETAIL)



URS 1701 GOLF ROAD, SUITE 1000 TEL (847) 228-0707
 ROLLING MEADOWS, IL 60008 FAX (847) 228-1115

VILLAGE OF ADDISON
**SALT CREEK GREENWAY TRAIL
 PLAN & PROFILE**
 STA. 9+298.724 TO STA. 9+600

NO.	NAME	DATE

DATE: 5/10/06 DRAWN BY: MIA&VAP
 DESIGNED BY: MIA CHECKED BY: DDL