

PROP. CURVE CL1-25  
 PI STA = 10+360.780  
 N = 50,479.119  
 E = 5,019.518  
 $\Delta = 3^\circ 55' 40''$  (LT)  
 R = 40,000 m  
 T = 1.372 m  
 L = 2.742 m  
 E = 0.024 m

PROP. CURVE CL1-26  
 PI STA = 10+378.150  
 N = 50,461.838  
 E = 5,017.757  
 $\Delta = 12^\circ 16' 07''$  (LT)  
 R = 30,000 m  
 T = 3.224 m  
 L = 6.424 m  
 E = 0.173 m

PROP. CURVE CL1-28  
 PI STA = 10+419.887  
 N = 50,420.668  
 E = 5,015.987  
 $\Delta = 13^\circ 00' 35''$  (LT)  
 R = 30,000 m  
 T = 3.421 m  
 L = 6.812 m  
 E = 0.194 m

PROP. CURVE CL1-29  
 PI STA = 10+437.960  
 N = 50,402.571  
 E = 5,015.555  
 $\Delta = 7^\circ 32' 13''$  (LT)  
 R = 30,000 m  
 T = 1.976 m  
 L = 3.946 m  
 E = 0.065 m

PROP. CURVE CL1-31  
 PI STA = 10+467.314  
 N = 50,373.470  
 E = 5,013.920  
 $\Delta = 25^\circ 55' 11''$  (LT)  
 R = 30,000 m  
 T = 6.904 m  
 L = 13.572 m  
 E = 0.784 m

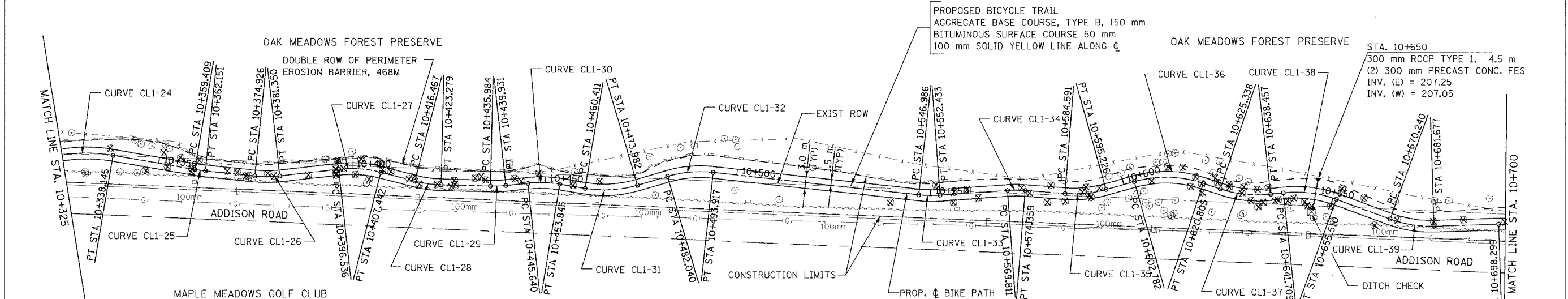
PROP. CURVE CL1-33  
 PI STA = 10+549.717  
 N = 50,291.897  
 E = 5,013.106  
 $\Delta = 10^\circ 24' 09''$  (LT)  
 R = 30,000 m  
 T = 2.731 m  
 L = 5.447 m  
 E = 0.124 m

PROP. CURVE CL1-35  
 PI STA = 10+589.965  
 N = 50,251.741  
 E = 5,013.304  
 $\Delta = 20^\circ 18' 39''$  (LT)  
 R = 30,000 m  
 T = 5.374 m  
 L = 10.635 m  
 E = 0.477 m

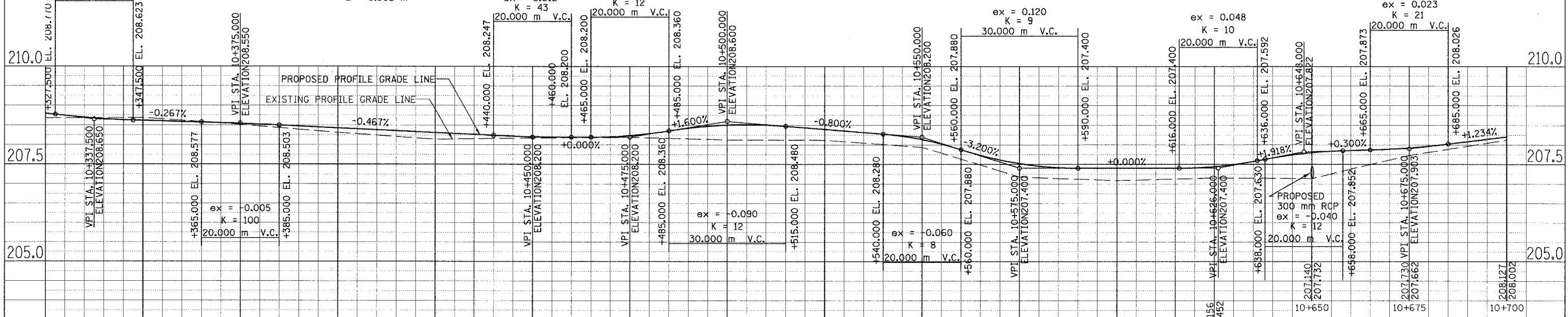
PROP. CURVE CL1-37  
 PI STA = 10+632.004  
 N = 50,210.939  
 E = 5,012.785  
 $\Delta = 25^\circ 03' 14''$  (LT)  
 R = 30,000 m  
 T = 6.666 m  
 L = 13.118 m  
 E = 0.732 m

PROP. CURVE CL1-39  
 PI STA = 10+676.029  
 N = 50,168.213  
 E = 5,005.267  
 $\Delta = 21^\circ 50' 34''$  (LT)  
 R = 30,000 m  
 T = 5.789 m  
 L = 11.437 m  
 E = 0.553 m

SECTION	COUNTY	TOTAL SHEETS	SHEET NO.
02-00090-00-BT	DUPAGE	117	17
STA. TO STA.			
IDOT PROJECT NO. M-8003(222)			
SALT CREEK GREENWAY TRAIL			
CONTRACT NO. 83713			



PROP. CURVE CL1-24 PI STA = 10+330.317 N = 50,509.352 E = 5,024.710 $\Delta = 22^\circ 43' 46''$ (RT) R = 40,000 m T = 8.040 m L = 15.868 m E = 0.800 m	PROP. CURVE CL1-27 PI STA = 10+402.050 N = 50,438.065 E = 5,020.446 $\Delta = 20^\circ 49' 42''$ (RT) R = 30,000 m T = 5.514 m L = 10.906 m E = 0.502 m	PROP. CURVE CL1-30 PI STA = 10+449.768 N = 50,390.826 E = 5,016.825 $\Delta = 15^\circ 40' 12''$ (RT) R = 30,000 m T = 4.128 m L = 8.205 m E = 0.283 m	PROP. CURVE CL1-32 PI STA = 10+488.057 N = 50,353.346 E = 5,019.851 $\Delta = 22^\circ 41' 02''$ (RT) R = 30,000 m T = 6.017 m L = 11.877 m E = 0.598 m	PROP. CURVE CL1-34 PI STA = 10+572.089 N = 50,269.569 E = 5,014.722 $\Delta = 8^\circ 41' 11''$ (RT) R = 30,000 m T = 2.278 m L = 4.548 m E = 0.086 m	PROP. CURVE CL1-35 PI STA = 10+589.965 N = 50,251.741 E = 5,013.304 $\Delta = 20^\circ 18' 39''$ (LT) R = 30,000 m T = 5.374 m L = 10.635 m E = 0.477 m	PROP. CURVE CL1-36 PI STA = 10+612.075 N = 50,230.354 E = 5,019.341 $\Delta = 34^\circ 25' 21''$ (RT) R = 30,000 m T = 9.293 m L = 18.024 m E = 1.406 m	PROP. CURVE CL1-38 PI STA = 10+648.734 N = 50,194.102 E = 5,014.672 $\Delta = 26^\circ 21' 32''$ (RT) R = 30,000 m T = 7.025 m L = 13.801 m E = 0.812 m
---	---	--	---	---	---	---	---



208.676 208.800 EXIST. PGL ELEV. PROP. PGL ELEV.	208.688 208.617	208.520 208.545	208.317 208.433	208.143 208.317	208.178 208.212	208.194 208.240	208.130 208.510	208.121 208.400	207.942 208.140	207.178 207.520	207.089 207.400	208.127 208.002
10+325	10+350	10+375	10+400	10+425	10+450	10+475	10+500	10+525	10+550	10+575	10+600	10+700

**URS** 1701 GOLF ROAD, SUITE 1000 TEL (847) 228-0707  
 ROLLING MEADOWS, IL 60008 FAX (847) 228-1115

VILLAGE OF ADDISON  
**SALT CREEK GREENWAY TRAIL**  
**PLAN & PROFILE**  
 STA. 10+325 TO STA. 10+700

REVISIONS		
NO.	NAME	DATE

DATE: 5/10/06  
 DESIGNED BY: MIA  
 DRAWN BY: MIA&VAP  
 CHECKED BY: DDL