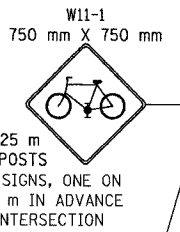


PROP. CURVE CL2-5
 PI STA = 12+890.299
 N = 48,639.564
 E = 5,800.708
 $\Delta = 30^\circ 08' 58''$ (RT)
 R = 30.000 m
 T = 8.080 m
 L = 15.786 m
 E = 1.069 m

PROP. CURVE CL2-6
 PI STA = 12+910.487
 N = 48,623.249
 E = 5,813.226
 $\Delta = 31^\circ 06' 18''$ (RT)
 R = 30.000 m
 T = 8.349 m
 L = 16.287 m
 E = 1.140 m

PROP. CURVE CL2-7
 PI STA = 12+974.921
 N = 48,558.806
 E = 5,820.445
 $\Delta = 12^\circ 39' 58''$ (RT)
 R = 30.000 m
 T = 3.330 m
 L = 6.632 m
 E = 0.184 m

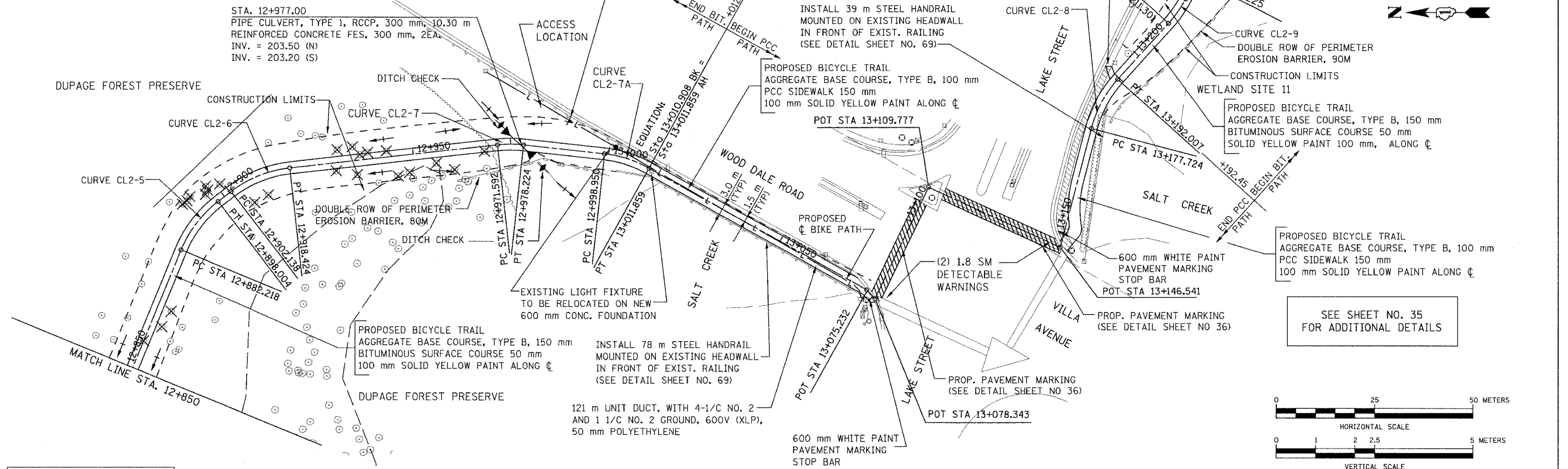


PROP. CURVE CL2-7A
 PI STA = 13+005.009
 N = 48,528.871
 E = 5,817.153
 $\Delta = 22^\circ 50' 18''$ (RT)
 R = 30.000 m
 T = 6.060 m
 L = 11.958 m
 E = 0.606 m

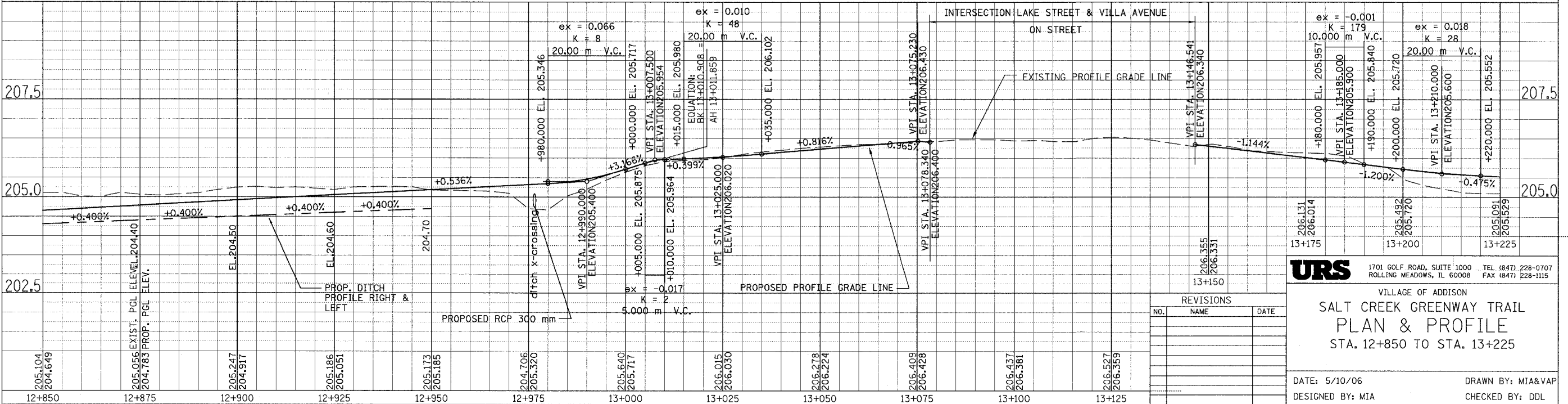
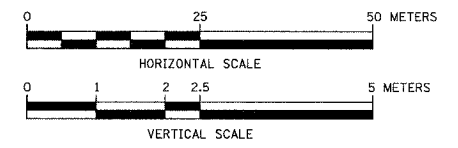
PROP. CURVE CL2-8
 PI STA = 13+185.003
 N = 48,409.225
 E = 5,831.298
 $\Delta = 27^\circ 16' 37''$ (RT)
 R = 30.000 m
 T = 7.279 m
 L = 14.282 m
 E = 0.870 m

PROP. CURVE CL2-9
 PI STA = 13+215.145
 N = 48,388.853
 E = 5,853.886
 $\Delta = 14^\circ 36' 15''$ (LT)
 R = 30.000 m
 T = 3.844 m
 L = 7.647 m
 E = 0.245 m

SECTION	COUNTY	TOTAL SHEETS	SHEET NO.
02-00090-00-BT	DUPAGE	117	24
STA. TO STA.			
IDOT PROJECT NO. M-8003(222)			
SALT CREEK GREENWAY TRAIL			
CONTRACT NO. 83713			



FOR LEGEND SEE SHEET NO. 14



URS 1701 GOLF ROAD, SUITE 1000 TEL (847) 228-0707
 ROLLING MEADOWS, IL 60008 FAX (847) 228-1115

VILLAGE OF ADDISON
**SALT CREEK GREENWAY TRAIL
 PLAN & PROFILE
 STA. 12+850 TO STA. 13+225**