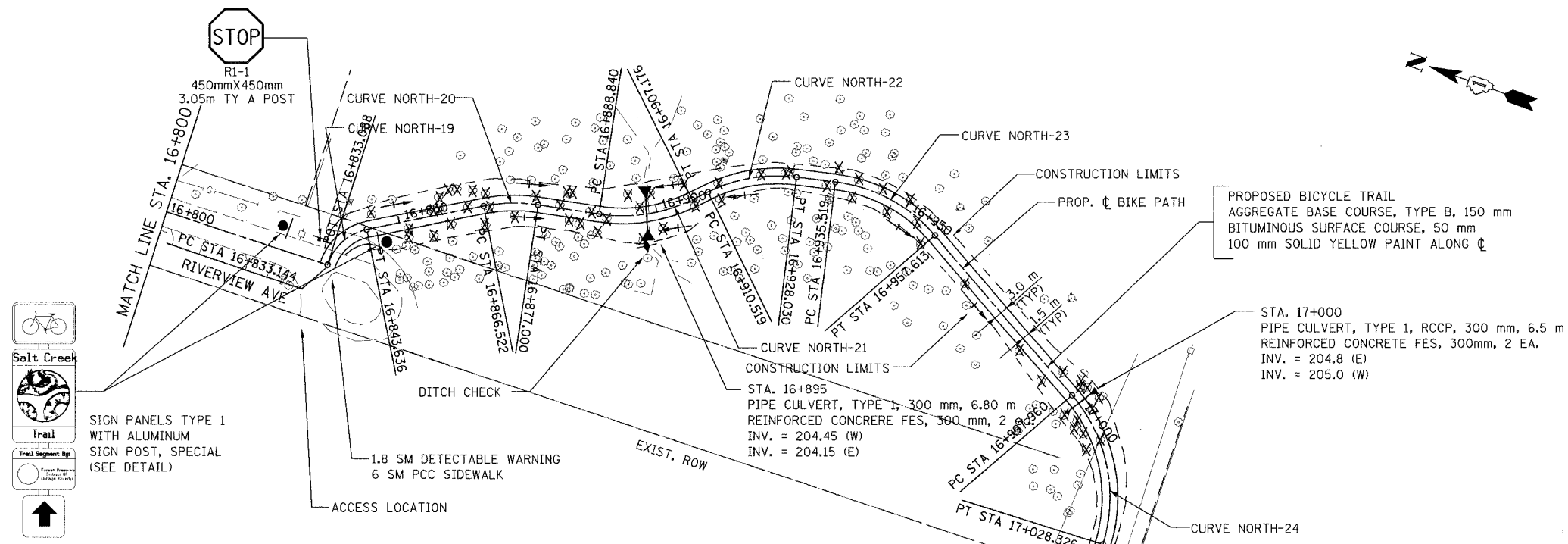
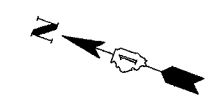


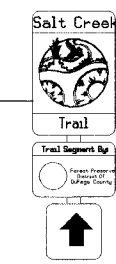
SECTION	COUNTY	TOTAL SHEETS	SHEET NO.
02-00090-00-BT	DUPAGE	117	33
STA.	TO STA.		
IDOT PROJECT NO. M-8003(222)			
SALT CREEK GREENWAY TRAIL			
CONTRACT NO. 83713			



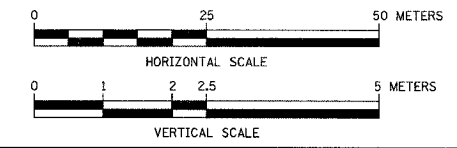
PROPOSED BICYCLE TRAIL  
 AGGREGATE BASE COURSE, TYPE B, 150 mm  
 BITUMINOUS SURFACE COURSE, 50 mm  
 100 mm SOLID YELLOW PAINT ALONG CL

STA. 17+000  
 PIPE CULVERT, TYPE 1, RCCP, 300 mm, 6.5 m  
 REINFORCED CONCRETE FES, 300mm, 2 EA.  
 INV. = 204.8 (E)  
 INV. = 205.0 (W)

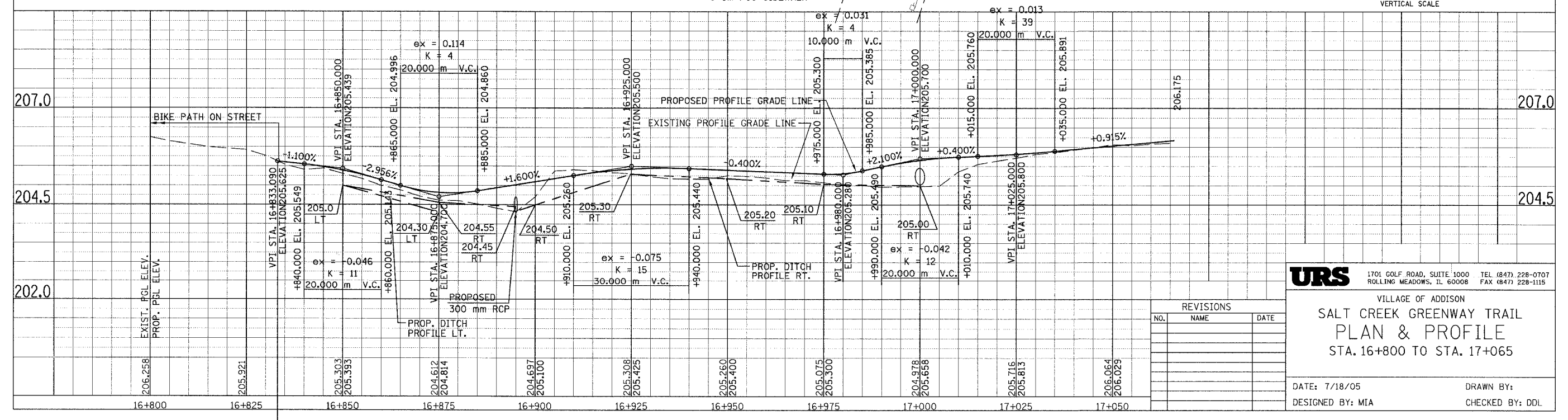
PROP. CURVE NORTH-19	PROP. CURVE NORTH-20	PROP. CURVE NORTH-21	PROP. CURVE NORTH-22	PROP. CURVE NORTH-23	PROP. CURVE NORTH-24
PI STA = 16+839.211	PI STA = 16+872.096	PI STA = 16+898.585	PI STA = 16+919.813	PI STA = 16+947.375	PI STA = 17+014.869
N = 581,413.352	N = 581,384.356	N = 581,358.281	N = 581,343.231	N = 581,315.868	N = 581,315.868
E = 330,378.176	E = 330,395.865	E = 330,401.110	E = 330,416.910	E = 330,423.201	E = 330,423.201
$\Delta = 60^\circ 06' 59''$ (RT)	$\Delta = 20^\circ 00' 38''$ (RT)	$\Delta = 35^\circ 01' 08''$ (LT)	$\Delta = 33^\circ 26' 37''$ (RT)	$\Delta = 42^\circ 11' 46''$ (RT)	$\Delta = 57^\circ 59' 40''$ (RT)
R = 10,000 m	R = 30,000 m	R = 30,000 m	R = 30,000 m	R = 30,000 m	R = 30,000 m
T = 5.787 m	T = 5.293 m	T = 9.464 m	T = 9.013 m	T = 11.575 m	T = 16.627 m
L = 10.492 m	L = 10.478 m	L = 18.336 m	L = 17.511 m	L = 22.094 m	L = 30.366 m
E = 1.554 m	E = 0.463 m	E = 1.458 m	E = 1.325 m	E = 2.156 m	E = 4.300 m



SIGN PANELS TYPE 1  
 WITH ALUMINUM  
 SIGN POST, SPECIAL  
 (SEE DETAIL)



FOR LEGEND SEE SHEET NO. 30



**URS** 1701 GOLF ROAD, SUITE 1000 TEL (847) 228-0707  
 ROLLING MEADOWS, IL 60008 FAX (847) 228-1115

VILLAGE OF ADDISON  
**SALT CREEK GREENWAY TRAIL**  
**PLAN & PROFILE**  
 STA. 16+800 TO STA. 17+065

DATE: 7/18/05 DRAWN BY:  
 DESIGNED BY: MIA CHECKED BY: DDL

REVISIONS		
NO.	NAME	DATE