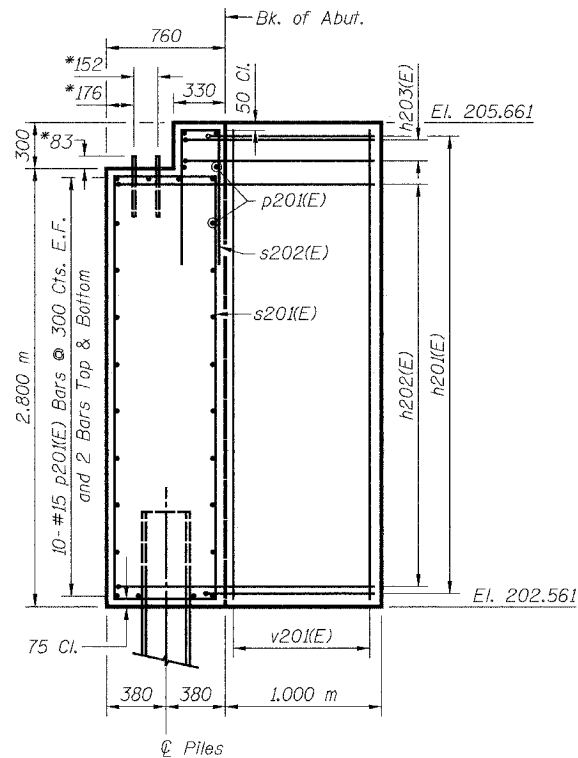
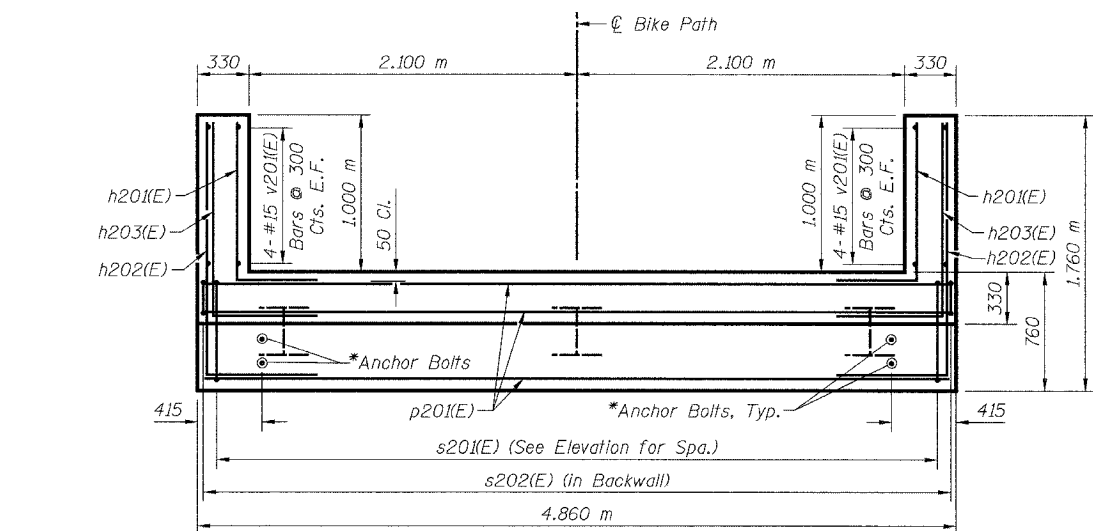


ELEVATION
(East Abutment)

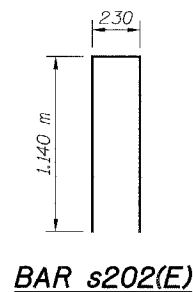


SIDE VIEW

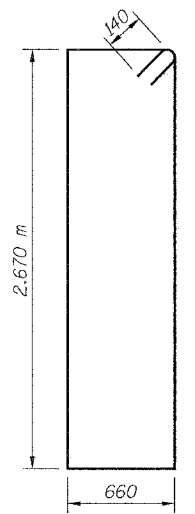
* Anchor bolt size and locations shall be checked against the Bridge Fabricator's requirements prior to setting them.



PLAN
(East Abutment)

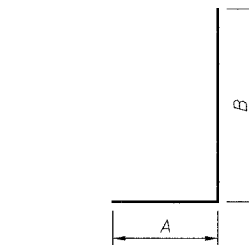


BAR s202(E)



BAR s201(E)

Bar	A	B
h201(E)	0.890 m	1.000 m
h202(E)	0.890 m	1.660 m
h203(E)	0.890 m	1.230 m



BAR h201(E) THRU h203(E)

BILL OF MATERIAL

Bar	No.	Size	Length	Shape
h201(E)	22	#15	1.89 m	┌───┐
h202(E)	20	#15	2.55 m	┌───┐
h203(E)	4	#15	2.12 m	┌───┐
p201(E)	28	#15	4.76 m	───
s201(E)	14	#15	6.94 m	┌───┐
s202(E)	17	#15	2.53 m	┌───┐
v201(E)	16	#15	2.97 m	───
Concrete Structures			Cu. M	12.9
Reinforcement Bars, Epoxy Coated			kg	670
Furnishing Steel Piles HP310x79			Meter	57
Driving Steel Piles			Meter	57
Metal Shoes			Each	3
Structure Excavation			Cu. M	7.6

LEGEND

E.F. = Each Face

MIN. BAR LAP

#15 = 890

NOTES:

Space reinforcement in cap to miss anchor bolts.

All edges shall have standard 20 mm chamfers except as noted.

For Anchor Bolt Details, see Sheet S27.

There shall be no splicing of longitudinal bars. Bars shall be ordered full length.

Bars designated (E) shall be epoxy coated.

SHEET S10 of S28

PILE DATA:

Type: HP310x79
Capacity: Driven to Refusal
Est. Length: 19.0 m
No. Required: 3

REVISIONS		NAME	DATE

1701 GOLF ROAD, SUITE 1000 TEL (847) 228-0707
ROLLING MEADOWS, IL 60008 FAX (847) 228-1115

VILLAGE OF ADDISON
**SALT CREEK GREENWAY TRAIL
PEDESTRIAN BRIDGE, STA. 12+535.5
EAST ABUTMENT DETAILS**

DATE: 11/03/04	DRAWN BY: MDS
DESIGNED BY: MDS	CHECKED BY: GAT