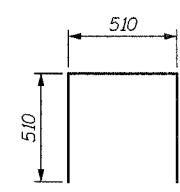


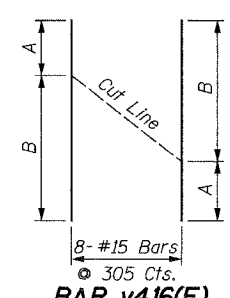
**BILL OF MATERIAL**

Bar	No.	Size	Length	Shape
h403(E)	22	#15	8.90 m	—
h405(E)	22	#15	4.70 m	—
h406(E)	9	#15	5.50 m	—
h407(E)	13	#15	6.10 m	—
u401(E)	118	#15	1.53 m	□
v406(E)	30	#15	2.10 m	—
v413(E)	15	#15	2.69 m	—
v414(E)	15	#15	2.90 m	—
v415(E)	14	#15	3.14 m	—
v416(E)	8	#15	4.01 m	—
v417(E)	30	#15	1.24 m	—
Concrete Structures		Cu. M	28.6	
Reinforcement Bars, Epoxy Coated		kg	1,360	
Structure Excavation		Cu. M	15.1	
Permanent Steel Sheet Piling		Sq. M	185	
Pipe Handrail		meter	36	



**BAR u401(E)**

Bar	A	B
v416(E)	0.87 m	3.14 m



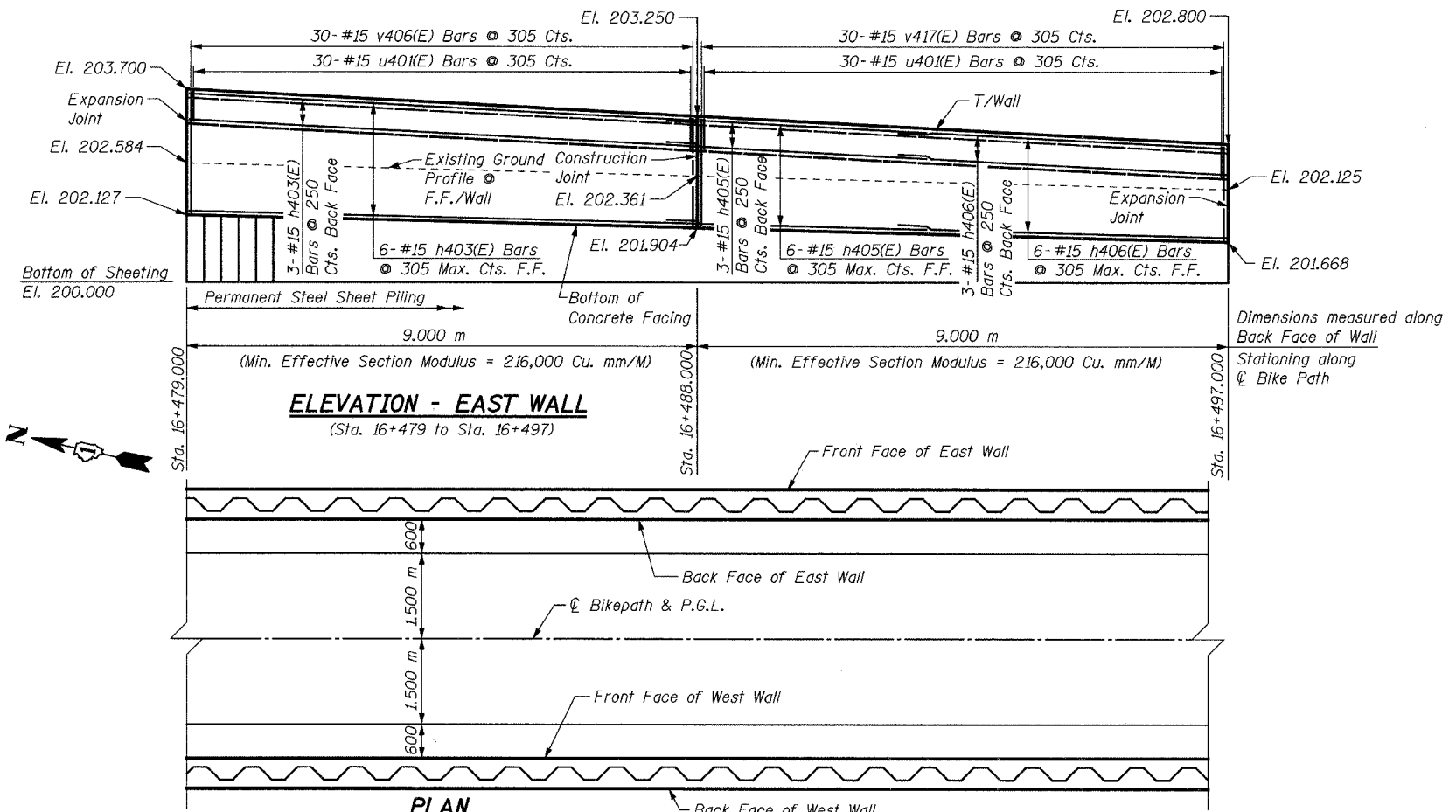
**BAR v416(E)**

Order Bars full length. Cut in Field as shown.

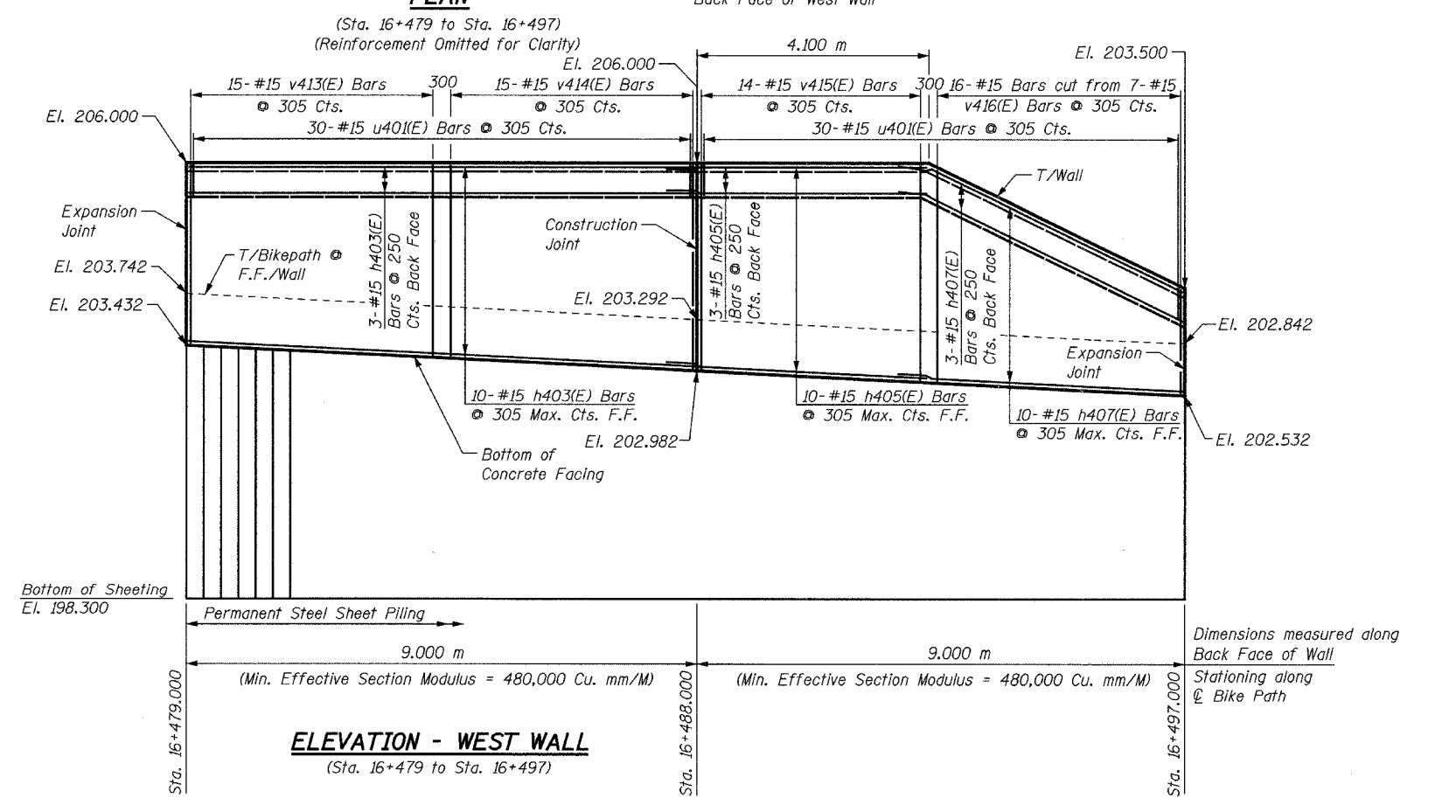
**NOTES:**

See Sheet S16 for Notes.

SHEET S18 of S28



**ELEVATION - EAST WALL**  
(Sta. 16+479 to Sta. 16+497)



**ELEVATION - WEST WALL**  
(Sta. 16+479 to Sta. 16+497)

REVISIONS		NAME	DATE

**URS** 1701 GOLF ROAD, SUITE 1000 TEL (847) 228-0707  
ROLLING MEADOWS, IL 60008 FAX (847) 228-1115

VILLAGE OF ADDISON  
**SALT CREEK GREENWAY TRAIL**  
RET. WALL STA. 16+479 TO 16+497  
PLAN & ELEVATION

DATE: 06/30/05 DRAWN BY: MDS  
DESIGNED BY: MDS CHECKED BY: GAT