

F.A.P. RTE.	SECTION	COUNTY	TOTAL SHEETS	SHEET NO.
336	99-00232-00-WR	KANE	97	1
FED. ROAD DIST. NO. 1 ILLINOIS		FED. AID PROJECT		

CONTRACT NO.: 83738

FOR INDEX OF SHEETS, SEE SHEET NO. 2

# STATE OF ILLINOIS DEPARTMENT OF TRANSPORTATION DIVISION OF HIGHWAYS

## PLANS FOR PROPOSED FEDERAL AID PROJECT

FAP 336 ORCHARD ROAD AT FAU 1542 JERICO ROAD  
INTERSECTION IMPROVEMENTS  
SECTION 99-00232-00-WR  
PROJECT NO. F-CMF-0336(005)  
JOB NO. C-91-142-99  
KANE COUNTY



**DESIGN DESIGNATION:**

**FUNCTIONAL CLASSIFICATION:**

ORCHARD ROAD - FAP 336 - OTHER PRINCIPAL ARTERIAL (SRA)  
JERICO ROAD - FAU 1542 - MINOR ARTERIAL

**DESIGN TRAFFIC:**

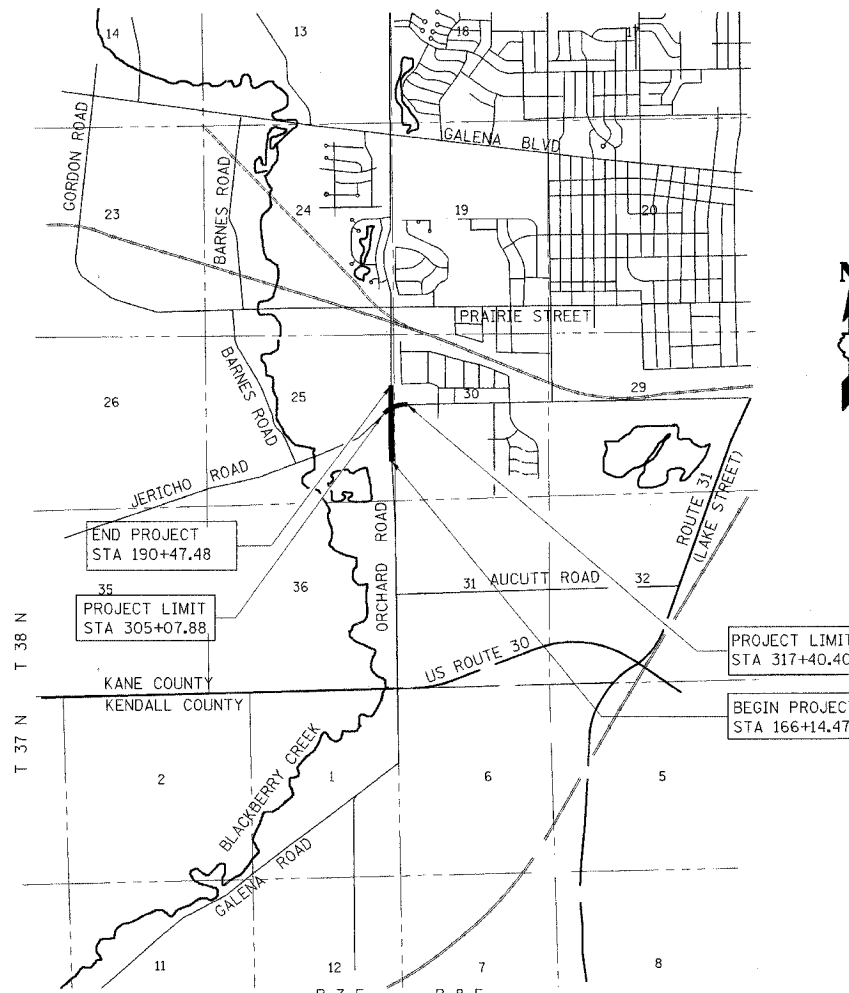
	ADT	DHV	% TRUCKS	
ORCHARD ROAD	38,000	3,195	6.5	AUCUTT ROAD TO JERICO ROAD
	37,000	3,195	6	NORTH OF JERICO ROAD
JERICO ROAD	5,000	895	2	WEST LEG
	10,000	810	6	EAST LEG

**POSTED SPEED:**

ORCHARD ROAD - 45 MPH  
JERICO ROAD - 45 MPH (WEST LEG)  
30 MPH (EAST LEG)

**DESIGN SPEED:**

ORCHARD ROAD - 45 MPH  
JERICO ROAD - 45 MPH



**LOCATION MAP**

NET LENGTH = 3666 FT = 0.69 MILES  
ORCHARD ROAD = 2433 FT. = 0.46 MILES  
JERICO ROAD = 1233 FT = 0.23 MILES

**DESCRIPTION OF PROJECT:**

THIS PROJECT CONSISTS OF THE REALIGNMENT AND RECONSTRUCTION OF THE ORCHARD ROAD/JERICO ROAD INTERSECTION, INCLUDING REPLACEMENT AND INSTALLATION OF NEW TRAFFIC SIGNALS, INSTALLATION OF INTERSECTION LIGHTING, CONSTRUCTION OF NEW STORM SEWERS, AND ALL INCIDENTAL AND COLLATERAL WORK AS NECESSARY TO COMPLETE THE IMPROVEMENT SHOWN HEREIN AND AS DESCRIBED IN THE SPECIFICATIONS

REGISTERED PROFESSIONAL ENGINEER OF ILLINOIS      11/30/07      EXPIRES

"PRINTED BY THE AUTHORITY OF THE STATE OF ILLINOIS"

APPROVED NOVEMBER 7 2005  
*Carl Smith*  
KANE COUNTY DIVISION OF TRANSPORTATION

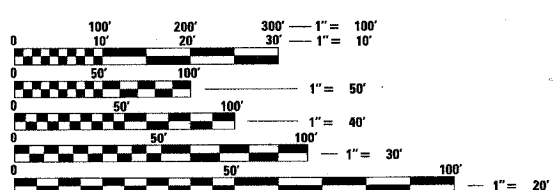
APPROVED NOVEMBER 8 2005  
*[Signature]*  
DISTRICT ENGINEER OF LOCAL ROADS & STREETS

APPROVED NOV. 10 2005  
*Diane M. O'Keefe*  
DEPUTY DIRECTOR OF HIGHWAYS, REGION ENGINEER

STATE OF ILLINOIS  
DEPARTMENT OF TRANSPORTATION



ILLINOIS PROFESSIONAL DESIGN  
FIRM LICENSE NO. 184-000813



FULL SIZE PLANS HAVE BEEN PREPARED USING STANDARD ENGINEERING SCALES. REDUCED SIZED PLANS WILL NOT CONFORM TO STANDARD SCALES. IN MAKING MEASUREMENTS ON REDUCED PLANS, THE ABOVE SCALES MAY BE USED.

J.U.L.I.E.  
JOINT UTILITY LOCATION INFORMATION FOR EXCAVATION  
1-800-892-0123

**CONTRACT NO. 83738**

IDOT FEDERAL AID DESIGN ENGINEER - ABIGAIL BRINKS (947) 705-4233  
 847/705-4201, SCHALMBURG, IL.  
 CONSULTANT  
 RJN GROUP, INC. 630/682-4700, WHEATON, IL  
 11/2/2005 4:39:30 PM c:\n17700\Cad\Design\N17700\_Cover\_Ldgn