

F.A.P. R.T.E.	SECTION	COUNTY	TOTAL SHEETS	SHEET NO.
336	99-00232-00-WR	KANE	97	15
STA.		TO STA.		
FED. ROAD DIST. NO.		ILLINOIS	FED. AID PROJECT	
CONTRACT NO.: 83738				

Curve OR-1  
P.I. Station 106+47.38 N 1,842,264.2471 E 972,834.5086  
Delta = 2° 42' 51" (LT)  
Degree = 0° 51' 25"  
Tangent = 158.374  
Length = 316.690  
Radius = 6,685.000  
External = 1.876  
P.C. Station 104+89.01 N 1,842,105.8735 E 972,834.9757  
P.T. Station 108+05.70 N 1,842,422.4210 E 972,826.5423

Curve OR-2  
P.I. Station 109+64.07 N 1,842,580.5949 E 972,818.5759  
Delta = 2° 42' 51" (RT)  
Degree = 0° 51' 25"  
Tangent = 158.374  
Length = 316.690  
Radius = 6,685.000  
External = 1.876  
P.C. Station 108+05.70 N 1,842,422.4210 E 972,826.5423  
P.T. Station 111+22.39 N 1,842,738.9685 E 972,818.1089

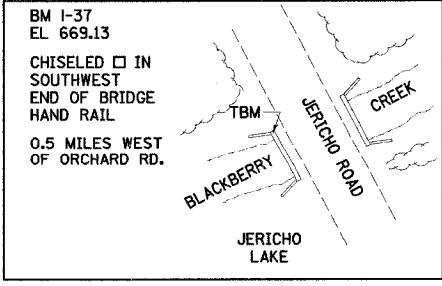
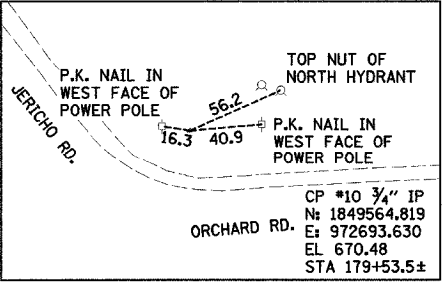
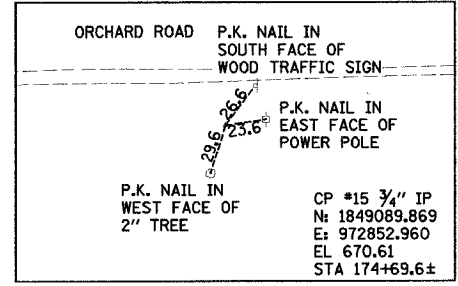
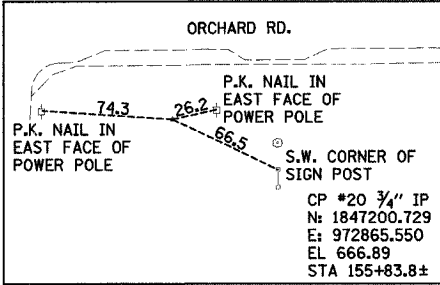
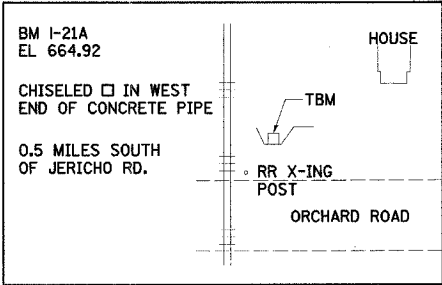
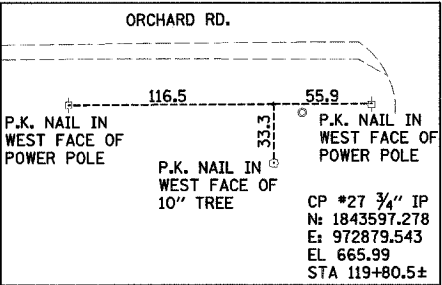
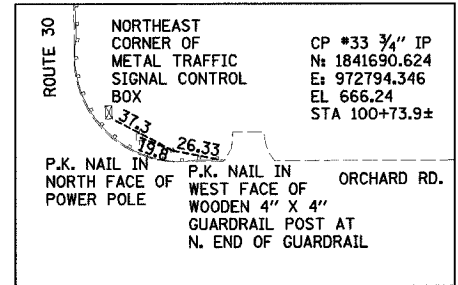
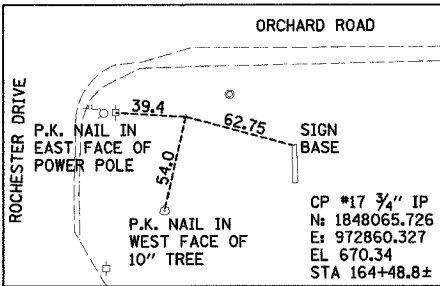
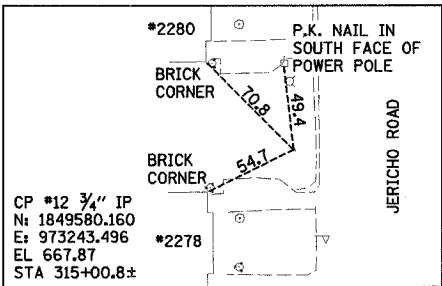
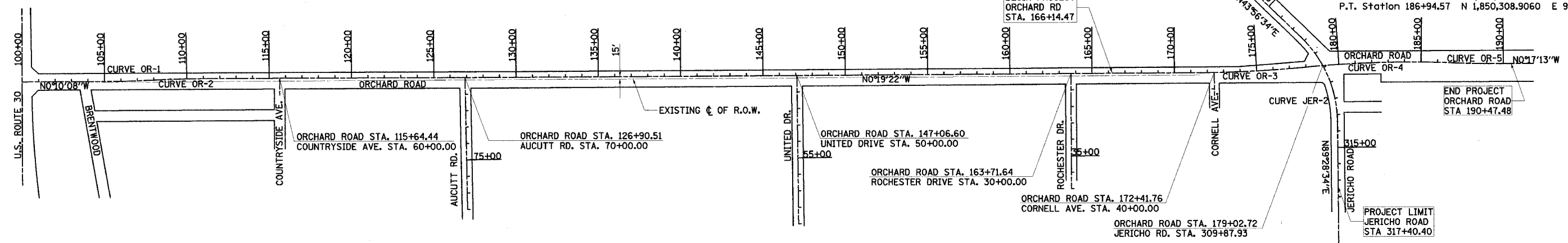
Curve OR-3  
P.I. Station 174+55.40 N 1,849,071.8954 E 972,786.5538  
Delta = 5° 00' 56" (LT)  
Degree = 0° 51' 25"  
Tangent = 292.775  
Length = 585.175  
Radius = 6,685.000  
External = 6.408  
P.C. Station 171+62.62 N 1,848,779.1256 E 972,788.2031  
P.T. Station 177+47.80 N 1,849,363.4001 E 972,759.3158

Curve OR-4  
P.I. Station 182+56.45 N 1,849,869.8471 E 972,711.9937  
Delta = 7° 31' 15" (RT)  
Degree = 0° 51' 25"  
Tangent = 439.378  
Length = 877.493  
Radius = 6,685.000  
External = 14.424  
P.C. Station 178+17.07 N 1,849,432.3751 E 972,752.8708  
P.T. Station 186+94.57 N 1,850,308.9060 E 972,728.7273

Curve OR-5  
P.I. Station 188+38.66 N 1,850,452.8924 E 972,734.2150  
Delta = 2° 28' 10" (LT)  
Degree = 0° 51' 25"  
Tangent = 144.091  
Length = 288.137  
Radius = 6,685.000  
External = 1.553  
P.C. Station 186+94.57 N 1,850,308.9060 E 972,728.7273  
P.T. Station 189+82.70 N 1,850,596.9816 E 972,733.4934

Curve JER-1  
P.I. Station 301+02.33 N 1,848,904.2496 E 972,109.8972  
Delta = 8° 10' 14" (LT)  
Degree = 3° 59' 57"  
Tangent = 102.327  
Length = 204.307  
Radius = 1,432.691  
External = 3.650  
P.C. Station 300+00.00 N 1,848,841.4104 E 972,029.1382  
P.T. Station 302+04.31 N 1,848,977.9285 E 972,180.9056

Curve JER-2  
P.I. Station 310+73.93 N 1,849,604.0885 E 972,784.3709  
Delta = 45° 32' 00" (RT)  
Degree = 7° 59' 54"  
Tangent = 300.632  
Length = 569.281  
Radius = 716.340  
External = 60.527  
P.C. Station 307+73.30 N 1,849,387.6232 E 972,575.7512  
P.T. Station 313+42.58 N 1,849,606.8378 E 973,084.9901



**rjngroup**  
Excellence through Ownership  
200 West Front Street  
Wheaton, IL 60187

REVISIONS	
NAME	DATE

ILLINOIS DEPARTMENT OF TRANSPORTATION  
KANE COUNTY DIVISION OF TRANSPORTATION  
ORCHARD ROAD RECONSTRUCTION  
**ALIGNMENT, TIES, AND BENCHMARKS**  
SCALE: VERT.  
HORIZ.  
DATE: 11/04/05  
DRAWN BY: RJN  
CHECKED BY: SPF

11/4/2005 3:33:08 PM R:\1177700\Xcd\Design\1177700-Alignment.dgn