

F.A. RTE.	SECTION	COUNTY	TOTAL SHEETS	SHEET NO.
336	99-00232-00-WR	KANE	96	36
STA. 160+00		TO STA. 175+50		
FED. ROAD DIST. NO.		ILLINOIS	FED. AID PROJECT	
CONTRACT NO.: 83738				

CURVE #1  
P.I. STA= 168+05.20 OS 1.31 RT  
 $\Delta = 3^\circ 38' 29''$  (LT)  
 $D = 0^\circ 57' 18''$   
 $R = 6,000.000$   
 $T = 190.732$   
 $L = 381.336$   
 $E = 3.031$   
P.C. STA= 166+14.47 OS 1.19 RT  
P.T. STA= 169+95.55 OS 10.68 LT

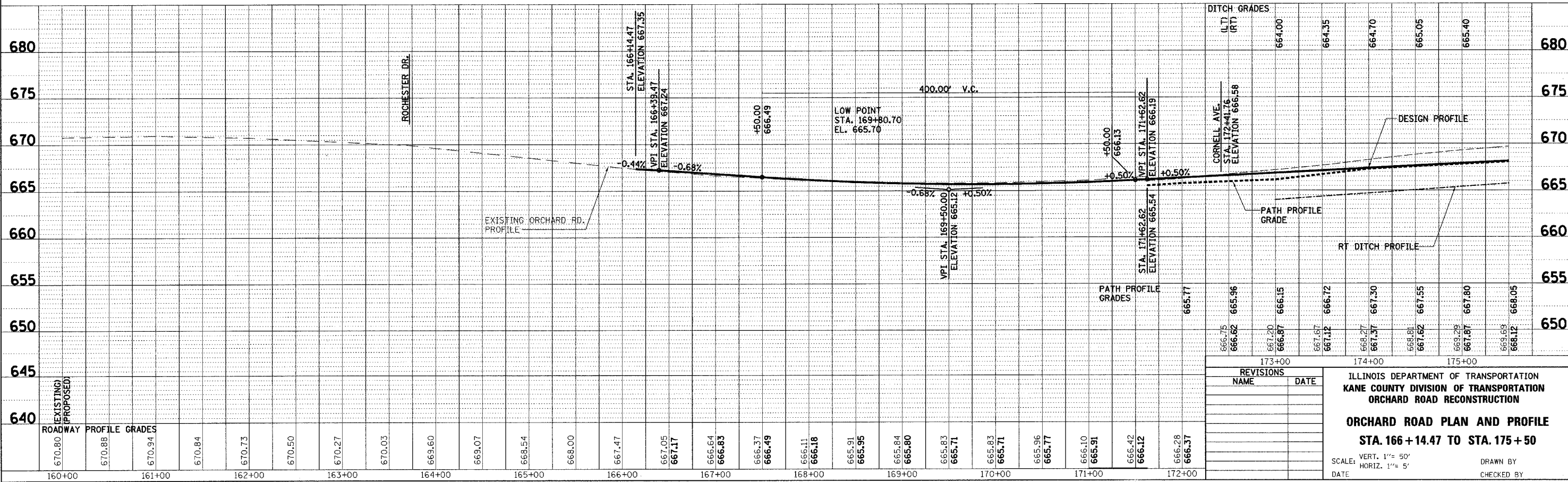
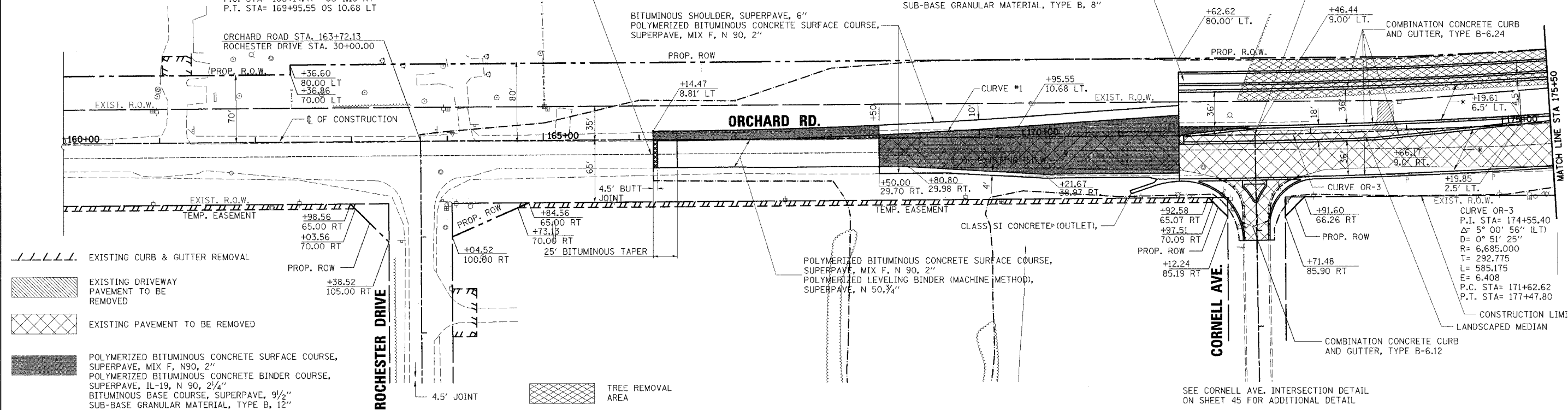
\* PORTLAND CEMENT CONCRETE PAVEMENT 10" (JOINTED) (STD 420106)  
SUB-BASE GRANULAR MATERIAL, TYPE B, 12"

BEGIN PROJECT  
STA 166+14.47

ORCHARD ROAD STA. 172+41.76  
CORNELL AVE. STA. 40+00.00



PLAN	DATE	
BY		
REVISIONS		
NO.	DATE	DESCRIPTION



REVISIONS		ILLINOIS DEPARTMENT OF TRANSPORTATION KANE COUNTY DIVISION OF TRANSPORTATION ORCHARD ROAD RECONSTRUCTION <b>ORCHARD ROAD PLAN AND PROFILE</b> <b>STA. 166 + 14.47 TO STA. 175 + 50</b> SCALE: VERT. 1" = 50' HORIZ. 1" = 5' DRAWN BY _____ CHECKED BY _____
NAME	DATE	

PROFILE	DATE	
BY		
REVISIONS		
NO.	DATE	DESCRIPTION

1/6/2005 12:49:48 PM c:\n17700\Corr\Design\17700\_PP\_06.lcgn